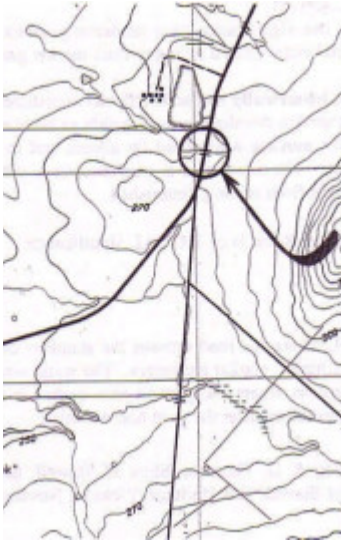

Water Race, Stawell Pomonal Road, BLACK RANGE



BR 01 - Shire of Northern
Grampians - Stage 2 Heritage
Study, 2004

Location

Stawell Pomonal Road BLACK RANGE, NORTHERN GRAMPIANS SHIRE

Municipality

NORTHERN GRAMPIANS SHIRE

Level of significance

Recommended for Heritage Overlay

Heritage Listing

Northern Grampians Shire

Statement of Significance

Last updated on - July 16, 2004

The Black Range Water Race has significance as a moderately intact example of a water race believed to be constructed by Chinese to channel water from a spring to their market gardens.

The Black Range Water Race is **historically** and **scientifically** significant at a **LOCAL** level. It is associated with Chinese market garden developments, possibly as early as the mid 19th century. It is an example of a technique for moving water used by miners and to a lesser extent individual farmers in the nineteenth century. The water race is also associated with the taking up of market gardening by Chinese when returns from mining diminished. Overall, the The Black Range Water Race is of **LOCAL** significance.

RECOMMENDED LEVEL OF SIGNIFICANCE: LOCAL

Heritage Study/Consultant	Northern Grampians - Shire of Northern Grampians - Stage 2 Heritage Study, Wendy Jacobs, Vicki Johnson, David Rowe, Phil Taylor, 2004;
Hermes Number	104794
Property Number	

This place/object may be included in the Victorian Heritage Register pursuant to the Heritage Act 2017. Check the Victorian Heritage Database, selecting 'Heritage Victoria' as the place source.

For further details about Heritage Overlay places, contact the relevant local council or go to Planning Schemes Online <http://planningschemes.dpcd.vic.gov.au/>