

# COOLOCK HOUSE



COOLOCK HOUSE SOHE  
2008



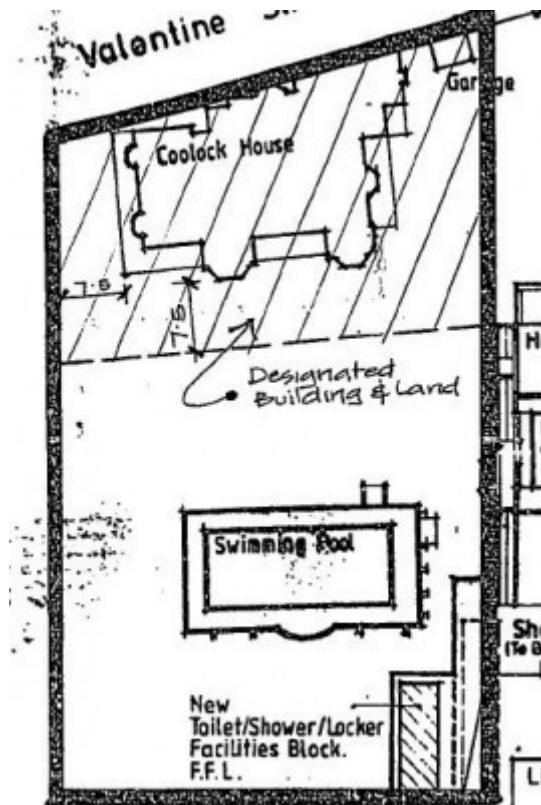
1 coolock house bendigo  
front view from street oct1988



coolock house bendigo detail  
of front entrance & iron  
fence oct1988



coolock house bendigo detail  
of verandah oct1980



h00790 plan h0790

---

## Location

PART 164 BARKLY STREET AND CORNER VALENTINE AND VIEW STREETS BENDIGO, GREATER BENDIGO CITY

## Municipality

GREATER BENDIGO CITY

## Level of significance

Registered

## Victorian Heritage Register (VHR) Number

H0790

## Heritage Overlay Numbers

HO283

## VHR Registration

July 11, 1990

## Heritage Listing

Victorian Heritage Register

---

## Statement of Significance

Last updated on - July 1, 1999

Coolock House, formerly known as 'Dendirah' is an exotic and eclectic grand mansion built in 1910 for George Victor Lansell, MLC, the son of Bendigo mining magnate Sir George Lansell. It is a two storey house constructed of rule rendered brick with the upper floor enclosed within an elaborate series of mansard roofs clad with red diamond pattern iron tiles. The house is an extensive alteration and addition of a single storey house built in 1880 by Mr D White. The architect of Coolock House was William Beebe, Bendigo's most prominent architect of the period, whose approach to design was influenced by the Picturesque Art Nouveau style. It is asymmetrical in plan and massing and each face is treated in diverse fashions borrowing from the second empire, French Baroque, Edwardian and European Art Nouveau styles. Of particular interest are the side entrance which has irregular massing, keyhole stained windows and sinuous mouldings. The front verandah has a very deep diaper patterned frieze and brackets and the fence is elaborate wrought iron in the Art Nouveau style. The interior is substantially intact and features ornate plaster ceilings and cornices in art nouveau patterns on the ground floor, a finely balustraded stair with balconette and a carved oak mantelpiece in the dining room in the 'Francois Premier' style.

Coolock House is of architectural and historical significance as follows:

1. It is an exotic and eclectic two storey mansion built in 1910 by William Beebe for George Victor Lansell, MLC.
2. Its unusual design features include an elaborate series of mansard roofs, keyhole stained windows and ornate plaster ceilings and cornices in art nouveau patterns.

3. Sir George Victor Lansell, MLC for Bendigo from 1928 to 1940 occupied the house for 49 years. In 1927 he entertained the Duke and Duchess of York at Coolock House.

## Permit Exemptions

### General Exemptions:

General exemptions apply to all places and objects included in the Victorian Heritage Register (VHR). General exemptions have been designed to allow everyday activities, maintenance and changes to your property, which don't harm its cultural heritage significance, to proceed without the need to obtain approvals under the Heritage Act 2017.

**Places of worship:** In some circumstances, you can alter a place of worship to accommodate religious practices without a permit, but you must **notify** the Executive Director of Heritage Victoria before you start the works or activities at least 20 business days before the works or activities are to commence.

**Subdivision/consolidation:** Permit exemptions exist for some subdivisions and consolidations. If the subdivision or consolidation is in accordance with a planning permit granted under Part 4 of the *Planning and Environment Act 1987* and the application for the planning permit was referred to the Executive Director of Heritage Victoria as a determining referral authority, a permit is not required.

Specific exemptions may also apply to your registered place or object. If applicable, these are listed below. Specific exemptions are tailored to the conservation and management needs of an individual registered place or object and set out works and activities that are exempt from the requirements of a permit. Specific exemptions prevail if they conflict with general exemptions.

Find out more about heritage permit exemptions [here](#).

Construction dates	1880,
Architect/Designer	Beebe, William,
Heritage Act Categories	Registered place,
Hermes Number	139
Property Number	

---

## History

Associated People:

## Extent of Registration

AMENDMENT OF REGISTER OF HISTORIC BUILDINGS

Historic Building No. 790:

Coolock House, Corner of Valentine and View Streets, Bendigo.

(To the extent of buildings and land shown hatched in Attachment B in the Register Book Certificate of Title Volume 2531 Folio 069.)

[Victoria Government Gazette No. G27 11 July 1990 p.2117]

*This place/object may be included in the Victorian Heritage Register pursuant to the Heritage Act 2017. Check the Victorian Heritage Database, selecting 'Heritage Victoria' as the place source.*

*For further details about Heritage Overlay places, contact the relevant local council or go to Planning Schemes Online <http://planningschemes.dpcd.vic.gov.au/>*