

ROCHESTER TERRACE



ROCHESTER TERRACE  
SOHE 2008



ROCHESTER TERRACE  
SOHE 2008



1 rochester terrace st vincent  
place albert park montague  
street elevation



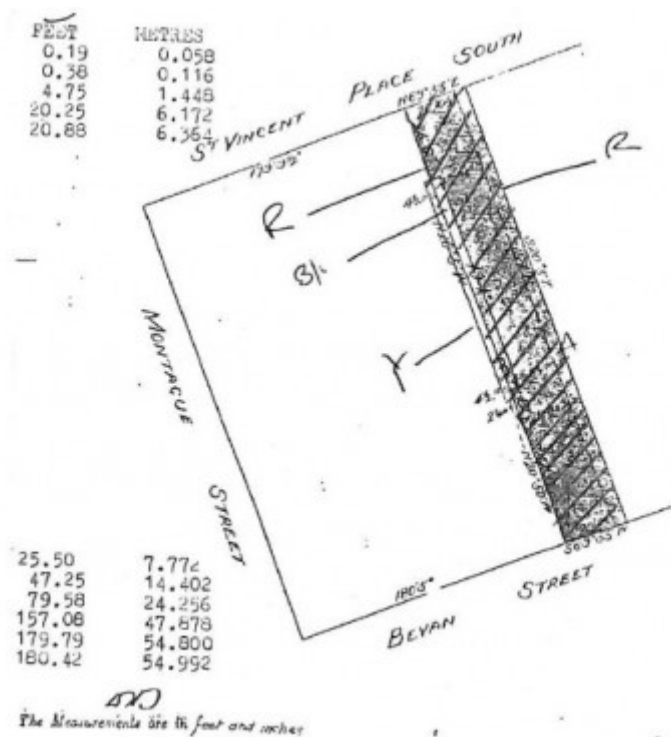
rochester terrace st vincent  
place albert park front view



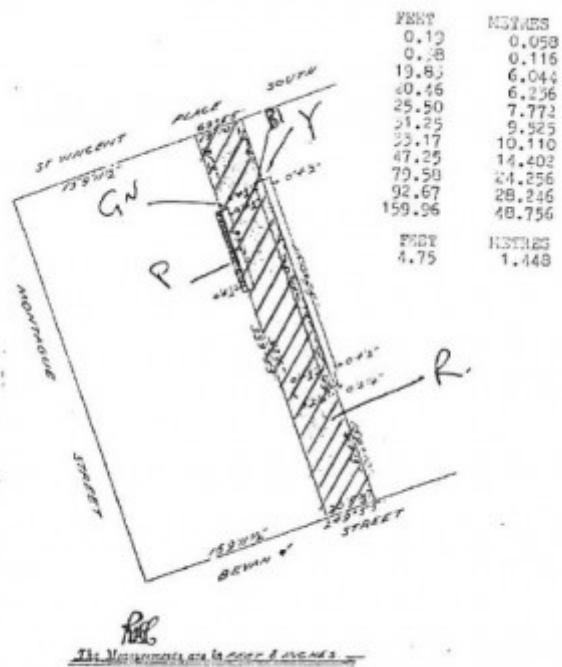
rochester terrace st vincent  
place albert park central  
balcony detail



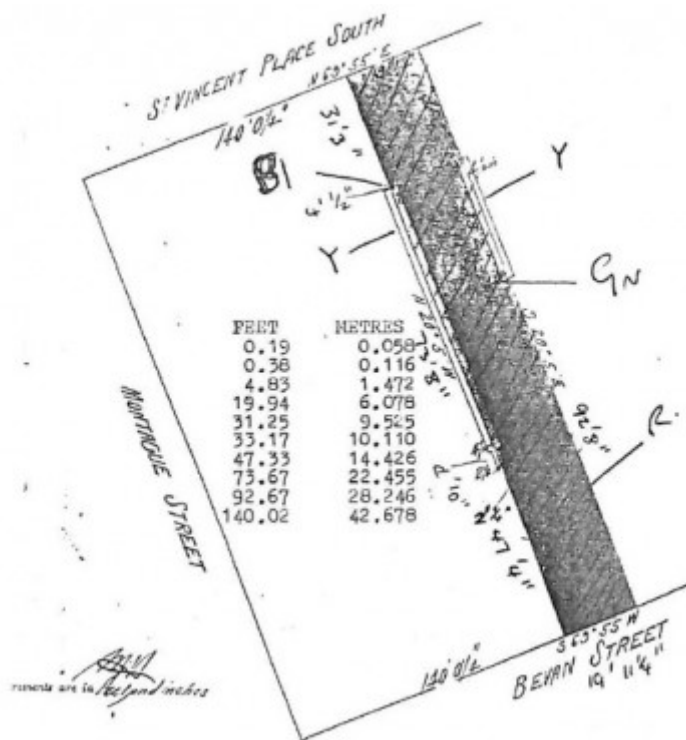
rochester terrace st vincent  
place albert park balcony



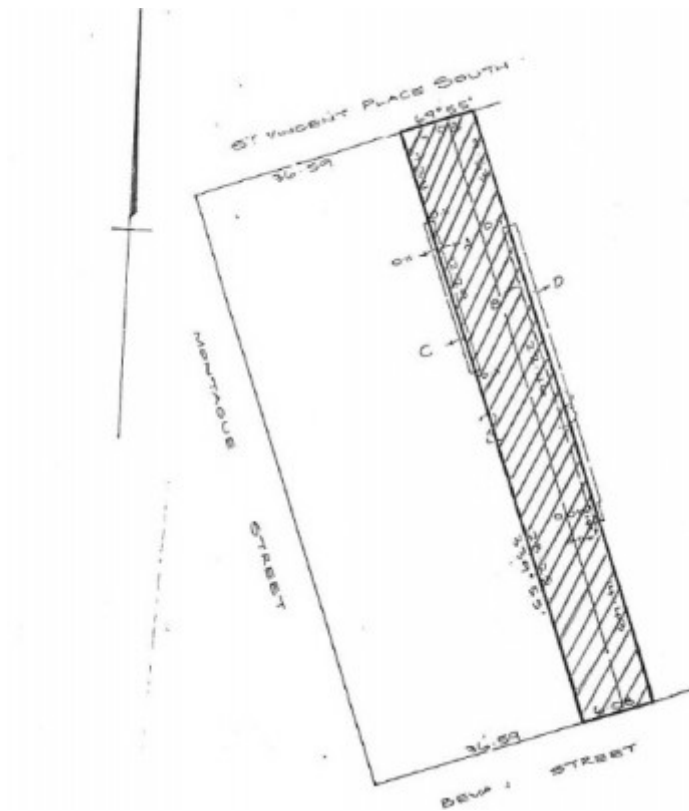
H0813 H0813 33 St Vincent plan



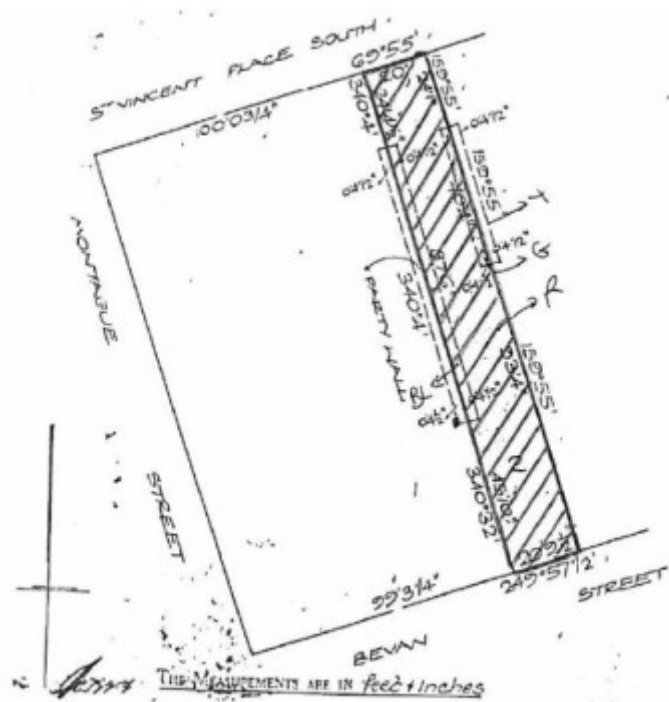
H0813 H0813 35 St Vincent plan



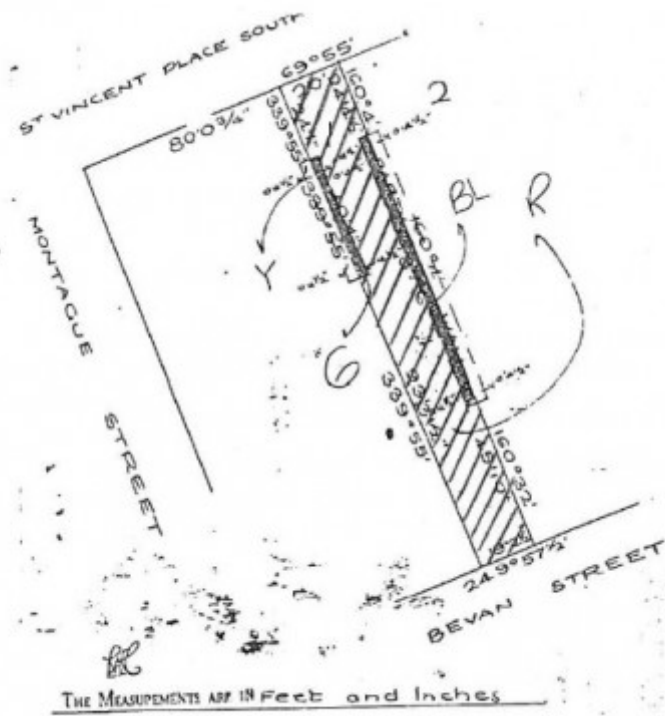
H0813 H0813 37 St Vincent plan



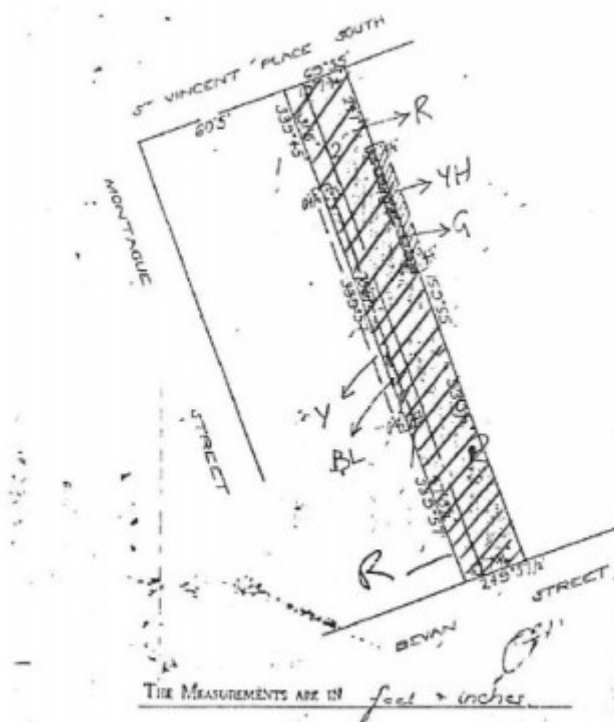
H0813 H0813 39 St Vincent plan



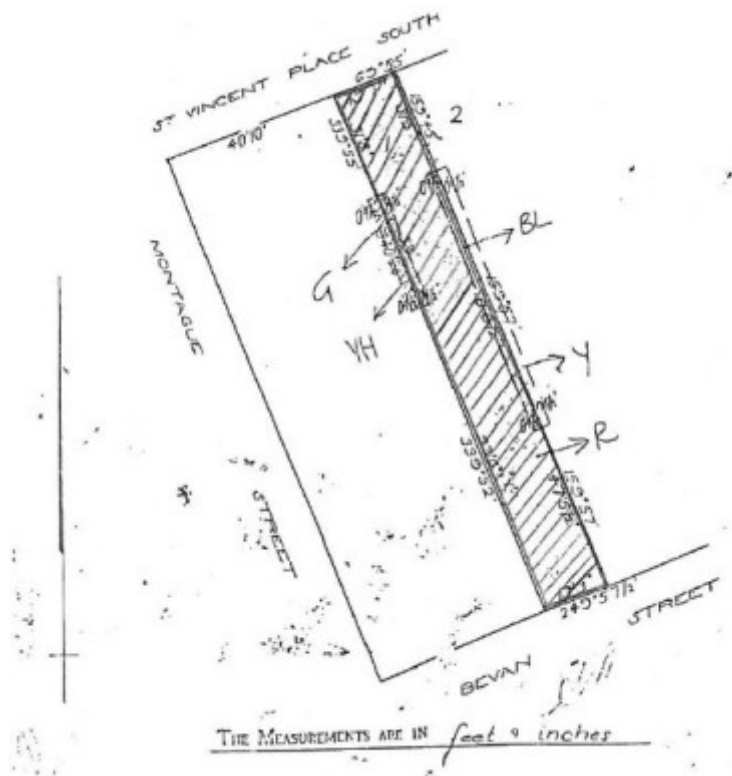
H0813 H0813 41 St Vincent plan



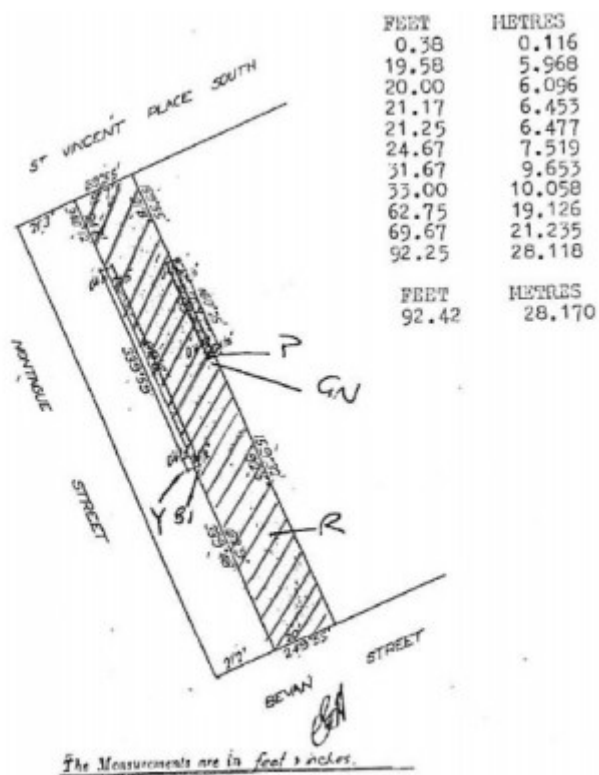
H0813 H0813 43 St Vincent plan



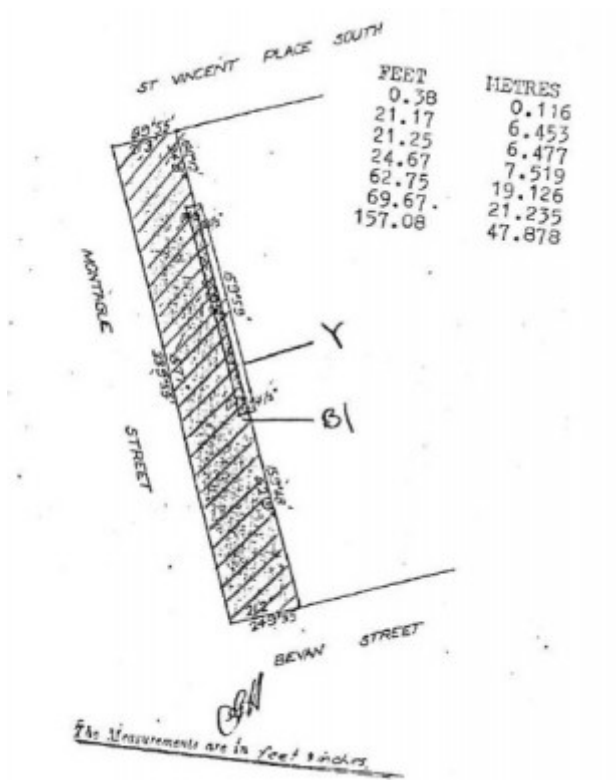
H0813 H0813 45 St Vincent plan



H0813 H0813 47 St Vincent plan



H0813 H0813 49 St Vincent plan



H0813 H0813 51 St Vincent plan

## Location

33-51 ST VINCENT PLACE ALBERT PARK, PORT PHILLIP CITY

## Municipality

PORT PHILLIP CITY

## Level of significance

Registered

## Victorian Heritage Register (VHR) Number

H0813

## Heritage Overlay Numbers

HO340

## VHR Registration

September 26, 1990

## Heritage Listing

## Statement of Significance

Last updated on - July 1, 1999

'Rochester Terrace' St Vincent Place, Albert Park is a group of ten ornately stuccoed brick terraces which were erected for the eminent Emerald Hill auctioneer, agent and speculator WP Buckhurst. In 1869, the first six of the eight roomed terrace houses, now numbered 33-43, of 'Rochester Terrace' were built. By 1879 the four additional buildings at what is now 45-51 were added to complete the row. Architect, Charles Boykett designed the terrace, his son Charles Bolten Boykett completing the row after his father's death. No other works of such status or competence of design are known of by either Boykett.

The terrace housed a number of prominent citizens in the 1870's including booksellers, Samuel Mullen and George Robertson, the biscuit manufacturer, TB Guest, the homeopathic chemist, R Martin and accountant, David Elder.

'Rochester Terrace' is one of the most commanding and coherently designed terrace rows in Melbourne. The individual houses have been combined to create a pavilioned composition very reminiscent of the English terrace model. The axially planned composition is in the classical revival style with dominant central block, flanking intermediate wings and strongly detailed end pavilions

The terrace is maintained in excellent, near original external condition. There have been a number of modifications and single storey extensions at the rear of the terrace. Internally the state of integrity also varies.

The detached garage and studios which face onto Bevan Street are not considered to be of either architectural or historic importance and these building are not included in the registration.

## Permit Exemptions

### General Exemptions:

General exemptions apply to all places and objects included in the Victorian Heritage Register (VHR). General exemptions have been designed to allow everyday activities, maintenance and changes to your property, which don't harm its cultural heritage significance, to proceed without the need to obtain approvals under the Heritage Act 2017.

**Places of worship:** In some circumstances, you can alter a place of worship to accommodate religious practices without a permit, but you must [notify](#) the Executive Director of Heritage Victoria before you start the works or activities at least 20 business days before the works or activities are to commence.

**Subdivision/consolidation:** Permit exemptions exist for some subdivisions and consolidations. If the subdivision or consolidation is in accordance with a planning permit granted under Part 4 of the *Planning and Environment Act 1987* and the application for the planning permit was referred to the Executive Director of Heritage Victoria as a determining referral authority, a permit is not required.

Specific exemptions may also apply to your registered place or object. If applicable, these are listed below. Specific exemptions are tailored to the conservation and management needs of an individual registered place or object and set out works and activities that are exempt from the requirements of a permit. Specific exemptions prevail if they conflict with general exemptions.

Find out more about heritage permit exemptions [here](#).

Construction dates	1869,
Architect/Designer	Boykett, Charles Bolten,
Heritage Act Categories	Registered place,
Hermes Number	15
Property Number	

---

## History

Associated People: Charles Bolten Boykett (junior)

## Extent of Registration

### AMENDMENT OF REGISTER OF HISTORIC BUILDINGS

Historic Building No. 813.

Rochester Terrace

33-51 St Vincent Place

South Melbourne

(All of the buildings with the exception of the outbuildings fronting Bevan Street and all of the land shown hatched which is described in Certificates of Title Volume 4428 Folio 431, Volume 7171 Folio 080, Volume 3360 Folio 945, Volume 3969 Folio 676, Volume 8128 Folio 970, Volume 8205 Folio 358, Volume 7965 Folios 073 and 074, Volume 7477 Folios 110 and 111.)

[Victoria Government Gazette No. G38 26 September 1990 p.2961]

*This place/object may be included in the Victorian Heritage Register pursuant to the Heritage Act 2017. Check the Victorian Heritage Database, selecting 'Heritage Victoria' as the place source.*

*For further details about Heritage Overlay places, contact the relevant local council or go to Planning Schemes Online <http://planningschemes.dpcd.vic.gov.au/>*