

# PRIMARY SCHOOL NO.461- FORMER BURWOOD SCHOOL



PRIMARY SCHOOL NO.461-  
FORMER BURWOOD  
SCHOOL SOHE 2008



PRIMARY SCHOOL NO.461-  
FORMER BURWOOD  
SCHOOL SOHE 2008



PRIMARY SCHOOL NO.461-  
FORMER BURWOOD  
SCHOOL SOHE 2008



1 primary school number 461  
burwood hwy burwood side  
view sep1984



primary school number 461  
burwood hwy burwood detail  
of windows



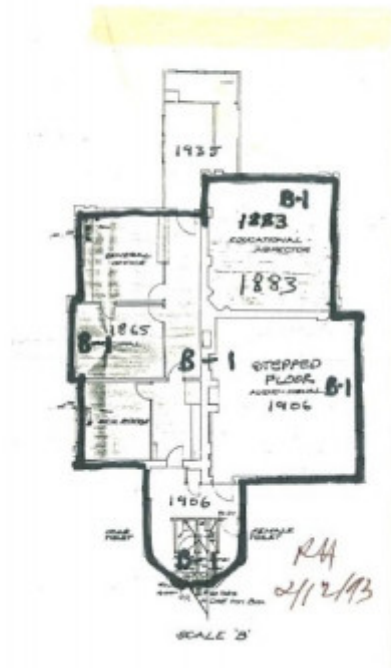
primary school number 461  
burwood hwy burwood rear  
view sep1984



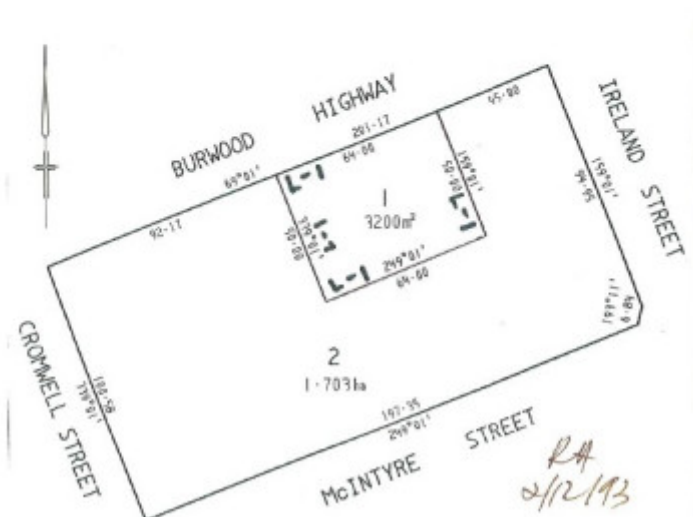
primary school number 461  
burwood hwy burwood  
rounded wing sep1984



primary school number 461  
burwood hyw burwood timber  
building feb1993



H0975 plan 602601 A



H0975 plan 602601 B

## Location

172 BURWOOD HIGHWAY BURWOOD, WHITEHORSE CITY

## **Municipality**

WHITEHORSE CITY

## **Level of significance**

Registered

## **Victorian Heritage Register (VHR) Number**

H0975

## **Heritage Overlay Numbers**

HO1

## **VHR Registration**

August 20, 1982

## **Amendment to Registration**

January 20, 1994

## **Heritage Listing**

Victorian Heritage Register

---

## **Statement of Significance**

Last updated on - August 18, 1993

The original brick single room school at Burwood was built in 1865 on Crown Land granted to the Wesleyans in 1855. The classroom was extended in 1883, 1906 and 1935.

The former Burwood Primary School, with the unusual stylistic detail in its Early English gothic paired windows, gable ends and bargeboards, is an extraordinary example of a single room school established under the Common Schools Board of Education between 1862-1872.

The 1883 and 1906 extensions to the original brick classroom demonstrate a changing sequence of architectural styles, patterns of occupancy and function affecting school buildings and education in Victoria.

The stepped floor in the 1906 classroom, designed to achieve better sight lines for pupils in 'object classes', is a rare and important example of past teaching practice and classroom design which, by 1901, was being replaced by flat floors with platforms for teachers.

The site includes a former Protestant Hall (1876, extended 1925) purchased by the Education Department in 1952.

## **Permit Exemptions**

## General Exemptions:

General exemptions apply to all places and objects included in the Victorian Heritage Register (VHR). General exemptions have been designed to allow everyday activities, maintenance and changes to your property, which don't harm its cultural heritage significance, to proceed without the need to obtain approvals under the Heritage Act 2017.

**Places of worship:** In some circumstances, you can alter a place of worship to accommodate religious practices without a permit, but you must **notify** the Executive Director of Heritage Victoria before you start the works or activities at least 20 business days before the works or activities are to commence.

**Subdivision/consolidation:** Permit exemptions exist for some subdivisions and consolidations. If the subdivision or consolidation is in accordance with a planning permit granted under Part 4 of the *Planning and Environment Act 1987* and the application for the planning permit was referred to the Executive Director of Heritage Victoria as a determining referral authority, a permit is not required.

Specific exemptions may also apply to your registered place or object. If applicable, these are listed below. Specific exemptions are tailored to the conservation and management needs of an individual registered place or object and set out works and activities that are exempt from the requirements of a permit. Specific exemptions prevail if they conflict with general exemptions.

Find out more about heritage permit exemptions [here](#).

Construction dates	1865,
Heritage Act Categories	Registered place,
Other Names	BURWOOD COMMON SCHOOL,
Hermes Number	185
Property Number	

---

## History

Associated People:

## Extent of Registration

### AMENDMENT OF REGISTER OF HISTORIC BUILDINGS

Historic Building No. 975.

Former Burwood Primary School, Burwood Road, Burwood.

(To the extent of:

1. All of the building known as the former Burwood Primary School including the original 1865 classroom, the 1883 and 1906 additions (but excluding the 1935 addition) marked B1 on Plan 602601 (A) endorsed by the Chairperson, Historic Buildings Council and held by the Director, Historic Buildings Council.
2. All of the land marked L1 on Plan 602601 (B) being part of the land described in Certificate of Title Volume 10043 Folio 504 and part of the land described in Certificate of Title Volume 851 Folio 029 endorsed by the Chairperson, Historic Buildings Council and held by the Director, Historic Buildings Council.)

[*Victoria Government Gazette* No. G3 20 January 1994 p.218]

*This place/object may be included in the Victorian Heritage Register pursuant to the Heritage Act 2017. Check the Victorian Heritage Database, selecting 'Heritage Victoria' as the place source.*

*For further details about Heritage Overlay places, contact the relevant local council or go to Planning Schemes Online <http://planningschemes.dpcd.vic.gov.au/>*