

## FORMER ARARAT GAOL



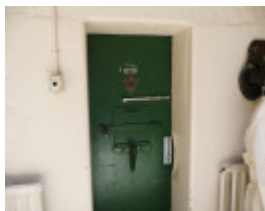
J WARD (ARARAT ASYLUM)  
SOHE 2008



J WARD (ARARAT ASYLUM)  
SOHE 2008



J WARD (ARARAT ASYLUM)  
SOHE 2008



J WARD (ARARAT ASYLUM)  
SOHE 2008



J WARD (ARARAT ASYLUM)  
SOHE 2008



J WARD (ARARAT ASYLUM)  
SOHE 2008



1 mental hospital ararat  
courtyard view



mental hospital ararat gate  
1994



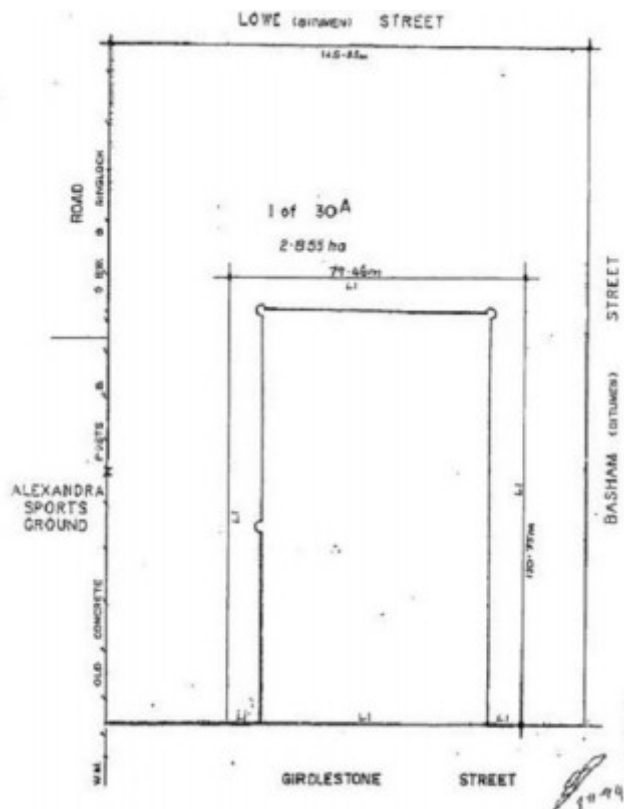
mental hospital ararat front  
gate & gatehouse



mental hospital ararat wall  
& watch tower



mental hospital ararat wall  
paintings



h01067 plan h1067

## Location

1-7 GIRDLESTONE STREET ARARAT, ARARAT RURAL CITY

## Municipality

ARARAT RURAL CITY

## Level of significance

Registered

## Victorian Heritage Register (VHR) Number

H1067

## Heritage Overlay Numbers

HO62

## VHR Registration

August 20, 1982

## Amendment to Registration

December 15, 1994

## Heritage Listing

Victorian Heritage Register

---

### Statement of Significance

Last updated on - May 28, 1999

What is significant?

J Ward was built in 1860-63 as the Ararat Gaol, to a design based on the Pentonville concept by the Public Works Department. It was run as a Gaol until 1886. In 1887, after alterations, the building was transferred to the Lunacy Department and used as a special ward of the Ararat Asylum for the criminal insane. J Ward, as it became known, was decommissioned in 1989. For 102 years it was the only institution in Victoria entirely devoted to the care of the criminal insane.

How is it significant?

J Ward (formally Ararat Gaol) is considered significant for social, historical and architectural reasons.

Why is it significant?

J Ward is important for reasons of symbolic and cultural associations. The foreboding exterior of the building was specifically designed as a symbolic and physical deterrent to crime and is reflective of the philosophies which informed the design and construction of prison buildings between 1857 and 1864. J Ward is important for its association with the history and treatment of psychiatric illness, particularly the criminally insane, in Victoria. The interior of the building in its layout and accommodation facilities represents the way of life of the institutionalised criminal insane in Victoria. Its design is demonstrative of the change in philosophy informing the administration of the penal system which occurred in Victoria in the late 1850s with the design itself forming an integral part in the process of reform of offenders over their physical punishment.

J Ward is a representative example of prisons designed according to the Pentonville concept of which there are five in the State and is an extraordinary example of an asylum, being the only institution entirely devoted to the care of the criminal insane in Victoria - an activity which was carried out there for 102 years.

### Permit Exemptions

#### General Exemptions:

General exemptions apply to all places and objects included in the Victorian Heritage Register (VHR). General exemptions have been designed to allow everyday activities, maintenance and changes to your property, which don't harm its cultural heritage significance, to proceed without the need to obtain approvals under the Heritage Act 2017.

**Places of worship:** In some circumstances, you can alter a place of worship to accommodate religious practices without a permit, but you must **notify** the Executive Director of Heritage Victoria before you start the works or activities at least 20 business days before the works or activities are to commence.

**Subdivision/consolidation:** Permit exemptions exist for some subdivisions and consolidations. If the subdivision or consolidation is in accordance with a planning permit granted under Part 4 of the *Planning and Environment Act 1987* and the application for the planning permit was referred to the Executive Director of Heritage Victoria as a determining referral authority, a permit is not required.

Specific exemptions may also apply to your registered place or object. If applicable, these are listed below. Specific exemptions are tailored to the conservation and management needs of an individual registered place or object and set out works and activities that are exempt from the requirements of a permit. Specific exemptions prevail if they conflict with general exemptions.

Find out more about heritage permit exemptions [here](#).

Construction dates	1859,
Heritage Act Categories	Registered place,
Other Names	MENTAL HOSPITAL (FORMER GAOL), J WARD (ARARAT ASYLUM),
Hermes Number	26
Property Number	

---

## Extent of Registration

### AMENDMENT OF REGISTER OF HISTORIC BUILDINGS

Historic Building No. 1067:

J. Ward, Girdlestone Street, Ararat, City of Ararat

(To the extent of:

1. All the building marked B1-B10, including the bluestone wall, on Plan No. 605692/2, signed by the Chairperson, Historic Buildings Council and held by the Director, Historic Buildings Council.
2. All the land marked L1 on Plan No. 605692/1 being 10 metres from the exterior wall to north, east and west and to Girdlestone Street on the south, signed by the Chairperson, HBC and held by the Director, HBC, being part of the land described as Crown Allotment 1, Section 30A in the Parish of Ararat.)

[Victoria Government Gazette No. G50 15 December 1994 p.3366]

*This place/object may be included in the Victorian Heritage Register pursuant to the Heritage Act 2017. Check the Victorian Heritage Database, selecting 'Heritage Victoria' as the place source.*

*For further details about Heritage Overlay places, contact the relevant local council or go to Planning Schemes Online <http://planningschemes.dpcd.vic.gov.au/>*