

# Victorian Heritage Database Report

Report generated 16/11/18

HERITAGE  
COUNCIL  
VICTORIA  
HERITAGE  
COUNCIL  
VICTORIA

## EASTERN HILL FIRE STATION



EASTERN HILL FIRE STATION SOHE  
2008



EASTERN HILL FIRE STATION SOHE  
2008



EASTERN HILL FIRE STATION SOHE  
2008



1 eastern hill fire station victoria parade  
east melbourne front view feb 1994



EASTERN HILL FIRE STATION July  
2016



EASTERN HILL FIRE STATION July  
2016



EASTERN HILL FIRE STATION July  
2016



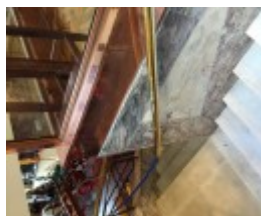
EASTERN HILL FIRE STATION July  
2016



EASTERN HILL FIRE STATION July  
2016



EASTERN HILL FIRE STATION July  
2016



EASTERN HILL FIRE STATION July  
2016



EASTERN HILL FIRE STATION July  
2016



EASTERN HILL FIRE STATION July 2016



EASTERN HILL FIRE STATION July 2016



EASTERN HILL FIRE STATION July 2016



EASTERN HILL FIRE STATION July 2016



EASTERN HILL FIRE STATION July 2016



EASTERN HILL FIRE STATION July 2016



EASTERN HILL FIRE STATION July 2016



EASTERN HILL FIRE STATION July 2016



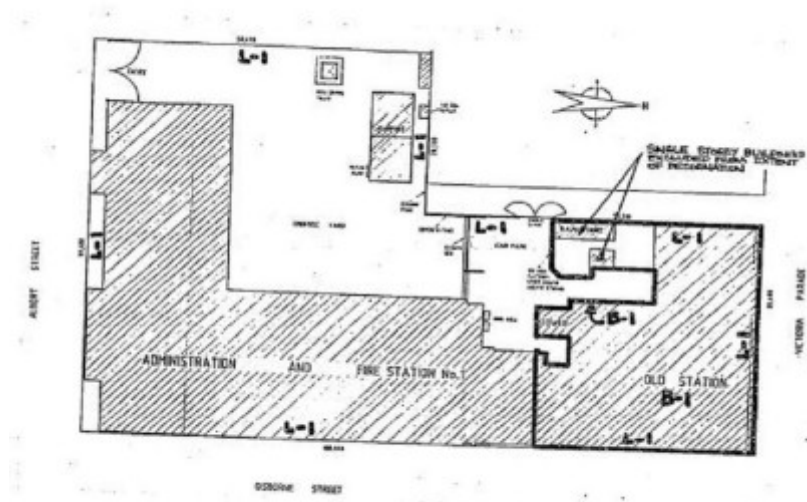
EASTERN HILL FIRE STATION July 2016



EASTERN HILL FIRE STATION July 2016



EASTERN HILL FIRE STATION July 2016



h01042 plan h1042

---

## Location

446-476 ALBERT STREET and 23-41 GIBBORNE STREET and 108-122 VICTORIA STREET EAST  
MELBOURNE, Melbourne City

## Municipality

MELBOURNE CITY

## Level of significance

Registered

## Victorian Heritage Register (VHR) Number

H1042

## Heritage Overlay Numbers

HO143

## VHR Registration

August 18, 1994

## Amendment to Registration

August 25, 1994

## Heritage Listing

Victorian Heritage Register

---

### Statement of Significance

Last updated on - May 4, 1999

What is significant?

The Eastern Hill Fire Station is a two storey brick building with accompanying watch tower built on an elevated with a wide panorama of the City. Architectural firms Tayler & Fitts, and Smith & Johnston designed the fire station in collaboration as a merger of two competition winning designs. Thomas Cockram & Co. constructed the building at a cost of nearly £16,000. The fire station was opened in 1893 as the headquarters station for the newly established Metropolitan Fire Brigades Board. Residential and workshop extensions, made to the rear of the building in the 1920's were replaced by a new head station building in 1978, and in later years the west wing of the original building was demolished. The Eastern Hill Fire Station displays some traces of the Queen Anne revival style that was popular in Britain in the 1870s and 1880s. The contrasting materials of red brick and cement, the use of parapeted gables with flanking scrolls, the steeply pitched roof and tall chimneys all contribute to this style. The building remains essentially a composition in the classical style, combining arcuation and trabeation. The Eastern Hill Fire Station is composed of two two-storey arcades flanking a central pavilion. The ground floor arcade is raised on a bluestone plinth. The upper storey arcade has depressed arches. The tower, with a cast iron and glass lookout and a projecting lower balcony is 150 ft. high. It was served by a direct-current electrical lift. The tower's style, with arched openings and niches, is reminiscent of Italian Romanesque campaniles.

How is it significant?

The Eastern Hill Fire Station is of architectural and historical significance to the State of Victoria.

Why is it significant?

The Eastern Hill Fire Station is architecturally significant for its distinctive massing enhanced by its unusual stylistic treatment. Stylistically it borrows elements from a number of sources, including the Queen Anne revival, but it is unified by classical principles. The Eastern Hill Fire Station is important as a late work of two prominent architectural practices, Tayler & Fitts and Smith & Johnston. The building is significant as a representative and essentially intact example of a building type. The ground floor boardroom and the watch room installed in the former hayloft in the 1920's are significant intact elements. The steel framed corrugated iron clad training structure attached to the south side of the watch tower recalls the use of the extraordinary "hook and ladder" technique which enabled firemen to gain external access to multi-storey buildings.

The Eastern Hill Fire Station is of historical significance as the first major project undertaken by the

Metropolitan Fire Brigades Board. It is a focal point in the historical development of organised fire fighting in Melbourne. The original building remained the Board's flagship for nearly ninety years and set the standard for the development of fire fighting installations throughout the metropolis. The tall watch tower, which dominated the city skyline for over half a century, became an important civic landmark.

Construction dates 1892,

Architect/Designer Smith & Johnson,

Heritage Act Categories Heritage place,

Hermes Number 4245

Property Number

---

## History

History of Place:

Eastern Hill was ideally suited as a site for the station for its capacity for views to suburbs as far away as Brighton, Coburg, Footscray and Williamstown. Communications remained poor and the primary means of notifying fires to the brigade was by spotting from a tower. The tower was manned 24 hours a day. The Illustrated Australia News of 1 July 1892 observed that the combination of winning entries in the design competition "will prove very effective for the purposes required, and be decidedly picturesque. The Queen Anne style of architecture is adopted, and the elevation reveals a substantial and ornamental structure."  
Associated People: Tayler & Fitts;

## Extent of Registration

AMENDMENT OF REGISTER OF HISTORIC BUILDINGS

Historic Building No. 1402

Eastern Hill Fire Station (1893 Building)

122 Victoria Parade, East Melbourne, City of Melbourne

(To the extent of:

\* All of the building constructed in 1893 as the original fire station, including the watch-tower, the basement of the demolished west wing and the cast-iron walkways connecting the east wing and the tower, marked B-1 on Plan 605163(A) endorsed by the Chairperson, Historic Buildings Council and held by the Director, Historic Buildings Council.

\* All of the land marked L-1 on Plan 605163(A) endorsed by the Chairperson, Historic Buildings Council and held by the Director, Historic Buildings Council, being all of the land described in Certificates of Title Volume 2460 Folio 491832, Volume 3742 Folio 748357 and Volume 9596 Folio 090.)

[Victoria Government Gazette No. G33 18 August 1994 p.2256]

*note: originally gazetted 1402 in error; regazetted with correct number 1042 one week later*

*This place/object may be included in the Victorian Heritage Register pursuant to the Heritage Act 2017. Check the Victorian Heritage Database, selecting 'Heritage Victoria' as the place data owner.*

*For further details about Heritage Overlay places, contact the relevant local council or go to Planning Schemes Online <http://planningschemes.dpcd.vic.gov.au/>*