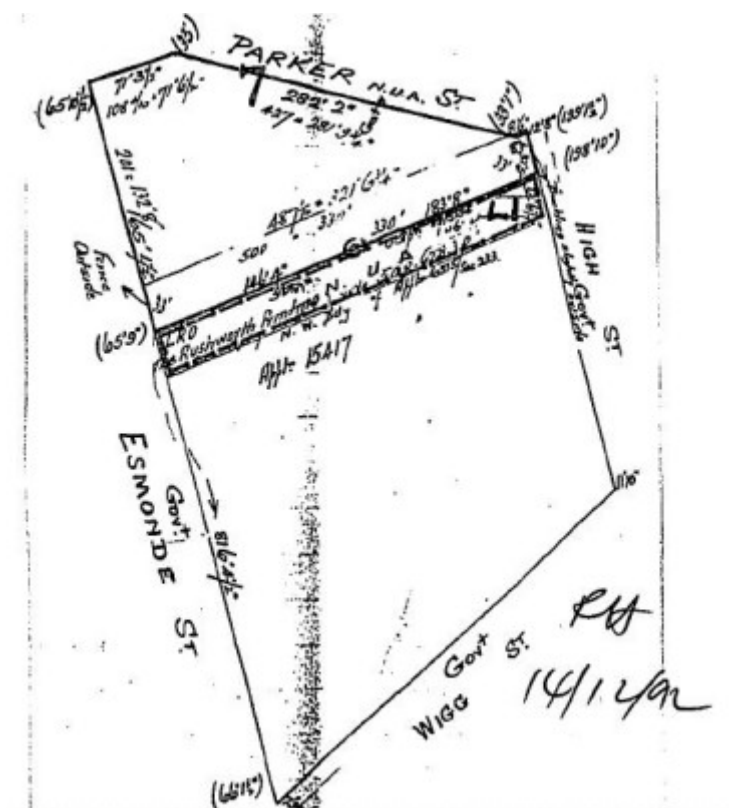


FORMER RUSHWORTH CHRONICLE STEAM PRINTING OFFICE



FORMER RUSHWORTH
CHRONICLE STEAM
PRINTING OFFICE SOHE
2008

1 former rushworth chroniclef
office front view



h00941 plan h0941

Location

17 HIGH STREET RUSHWORTH, CAMPASPE SHIRE

Municipality

CAMPASPE SHIRE

Level of significance

Registered

Victorian Heritage Register (VHR) Number

H0941

Heritage Overlay Numbers

HO310

VHR Registration

January 21, 1993

Heritage Listing

Victorian Heritage Register

Statement of Significance

Last updated on - February 9, 2000

What is significant?

The Rushworth Chronicle building, Rushworth, is a single-storey brick steam-printing office. It was constructed in 1888 to house Robinson's new steam printing presses.

Rushworth was settled in the early 1850s as a result of a rush to the Rushworth gold field, but the town's major growth came in response to land selection in the Waranga area from 1869. The Waranga Chronicle was established by Charles Robinson on 18 November 1869 and in 1886 changed its name to the Rushworth Chronicle; the short-lived Waranga Echo (1868-69) was its forerunner. The Rushworth Chronicle was one of the many newspapers that serviced local townships across Victoria in the nineteenth century. The introduction of the steam-powered printing press in the 1850s led to a marked growth in newspaper publishing in Australia; by 1888, there were 150 newspapers published across over 100 Victorian towns. The Rushworth Chronicle was printed from this building for 89 years, from 1888 to 1977; the paper ran continuously for a total of 108 years.

The building comprises the editor's office, printing room and workroom; the verandah was reinstated in 1991. A rear timber residence was necessary for the hands-on needs of the newspaper. Original features include the central double-panelled door and original fenestration, gabled roof and simple pediment to facade with raised segmental arch entablature (that also includes signage). It is built of locally made bricks that bear the maker's traditional thumb-print. Internal elements associated with printing include the original steam printing press, the overhead belting system to the ceiling, the water pipes installed under the floor boards for cooling steam, an open fireplace designed to heat the type metal for the linotype, and newspaper storage shelves; the steam engine was removed in the 1950s. The survival of a range of ancillary equipment contributes to the integrity of the site, including typeface, belting and webbing. The survival and on-site storage of back runs of the newspaper demonstrate the importance of the site as a continuing historical resource.

How is it significant?

The Rushworth Chronicle building is of architectural, historical and scientific (technological) significance to the State of Victoria.

Why is it significant?

The Rushworth Chronicle building is of architectural significance as one of the few surviving and relatively intact printing offices in the State. It retains important original features that demonstrate its function as a steam-printing office. The Rushworth Chronicle building is also architecturally significant as an example of Victorian (vernacular) building style.

The Rushworth Chronicle building is of historical significance for its demonstration of the important role of local newspapers in Victorian country towns, and its long association with Rushworth's major newspaper.

The Rushworth Chronicle building is of scientific (technological) significance for the survival of a number of elements associated with the printing works; their survival in situ contributes to the integrity of the site.

The Rushworth Chronicle building is of local historical significance because of the long and important contribution it has made to the local economy and livelihood of the township of Rushworth and the wider region. The Rushworth Chronicle building makes an important contribution to the Urban Conservation Area of High Street, Rushworth.

The Rushworth Chronicle building is historically significant for its association with local newspaper owner Charles James Robinson. It is also important for its long association with the Muhlhan family; through the editorships of father Edwin Andrew Muhlhan 1903-17, and son Leslie Muhlhan 1917-24. In addition to the publication of the Rushworth Chronicle, the printing works provided a range of printing services to the local area.

[Online Data Upgrade Project 2004]

Permit Exemptions

General Exemptions:

General exemptions apply to all places and objects included in the Victorian Heritage Register (VHR). General exemptions have been designed to allow everyday activities, maintenance and changes to your property, which don't harm its cultural heritage significance, to proceed without the need to obtain approvals under the Heritage Act 2017.

Places of worship: In some circumstances, you can alter a place of worship to accommodate religious practices without a permit, but you must [notify](#) the Executive Director of Heritage Victoria before you start the works or activities at least 20 business days before the works or activities are to commence.

Subdivision/consolidation: Permit exemptions exist for some subdivisions and consolidations. If the subdivision or consolidation is in accordance with a planning permit granted under Part 4 of the *Planning and Environment Act 1987* and the application for the planning permit was referred to the Executive Director of Heritage Victoria as a determining referral authority, a permit is not required.

Specific exemptions may also apply to your registered place or object. If applicable, these are listed below. Specific exemptions are tailored to the conservation and management needs of an individual registered place or object and set out works and activities that are exempt from the requirements of a permit. Specific exemptions prevail if they conflict with general exemptions.

Find out more about heritage permit exemptions [here](#).

Specific Exemptions:

General Conditions: 1. All exempted alterations are to be planned and carried out in a manner which prevents damage to the fabric of the registered place or object. General Conditions: 2. Should it become apparent during further inspection or the carrying out of works that original or previously hidden or inaccessible details of the place or object are revealed which relate to the significance of the place or object, then the exemption covering such works shall cease and Heritage Victoria shall be notified as soon as possible. Note: All archaeological places have the potential to contain significant sub-surface artefacts and other remains. In most cases it will be necessary to obtain approval from the Executive Director, Heritage Victoria before the undertaking any works that have a significant sub-surface component.

General Conditions: 3. If there is a conservation policy and plan all works shall be in accordance with it. Note: A Conservation Management Plan or a Heritage Action Plan provides guidance for the management of the heritage values associated with the site. It may not be necessary to obtain a heritage permit for certain works specified in the management plan.

General Conditions: 4. Nothing in this determination prevents the Executive Director from amending or rescinding all or any of the permit exemptions. General Conditions: 5. Nothing in this determination exempts owners or their agents from the responsibility to seek relevant planning or building permits from the responsible authorities where applicable. Minor Works : Note: Any Minor Works that in the opinion of the Executive Director will not adversely affect the heritage significance of the place may be exempt from the permit requirements of the Heritage Act. A person proposing to undertake minor works must submit a proposal to the Executive Director. If the Executive Director is satisfied that the proposed works will not adversely affect the heritage values of the site, the applicant may be exempted from the requirement to obtain a heritage permit. If an applicant is uncertain whether a heritage permit is required, it is recommended that the permits co-ordinator be contacted.

Construction dates 1910,
Heritage Act Categories Registered place,
Hermes Number 1003
Property Number

History

The draft statement of significance and the above history were produced as part of an Online Date Upgrade Project 2004. Sources were as follows:

National Trust of Australia (Vic.), file no. 5658.

Rushworth Chronicle, 20 November 1969.

Colour postcard c.1890s shows the wording 'Steam Printing Office'.

'Waranga Conservation Study'. 1988.

Waranga Chronicle ran from No. 1 (18 November 1869) until no. 865 (9 July 1886).

Waranga Echo, 1868-69.

The Golden Years at Whroo (1981).

Extent of Registration

AMENDMENT OF REGISTER OF HISTORIC BUILDINGS

Historic Building No. 941.

The Former Rushworth Chronicle Steam Printing Office, 17 High Street, Rushworth

(To the extent of:

1. All the buildings known as the former Rushworth Chronicle Steam Printing Office.

2. All the land described in the Registrar-General's Office Memorial Book 853 No. 988 marked L-1 on Plan 6050640A endorsed by the Chairperson, Historic Buildings Council and held by the Director, Historic Buildings Council.)

[*Victoria Government Gazette* No. G3 21 January 1993 p.156]

This place/object may be included in the Victorian Heritage Register pursuant to the Heritage Act 2017. Check the Victorian Heritage Database, selecting 'Heritage Victoria' as the place source.

For further details about Heritage Overlay places, contact the relevant local council or go to Planning Schemes Online <http://planningschemes.dpcd.vic.gov.au/>