

Barcelona Terrace & Gardens



Barcelona Terrace - 37
Brunswick Street



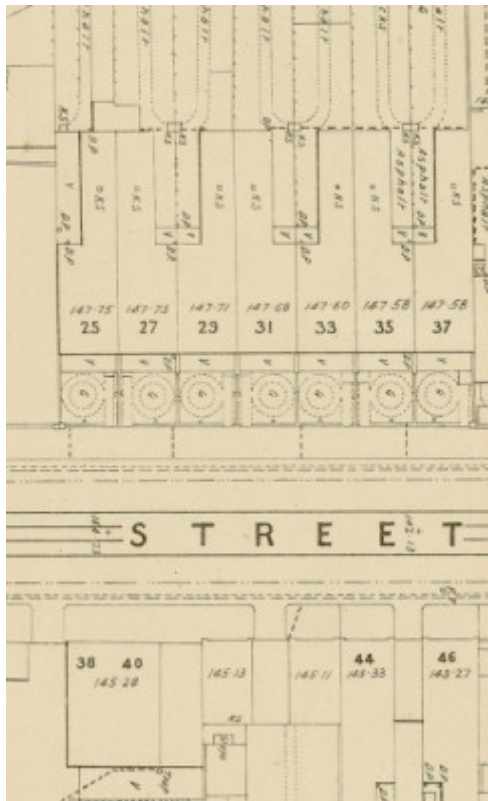
Barcelona Terrace



Barcelona Terrace



Barcelona Terrace



MMBW Map 1206 - 1898

Location

37 Brunswick Street, FITZROY VIC 3065 - Property No 251920

Municipality

YARRA CITY

Level of significance

Incl in HO area indiv sig

Heritage Overlay Numbers

HO153

Heritage Listing

Yarra City

Statement of Significance

Last updated on -

The following wording is from the John Patrick Landscape Citation, 1998 for the property. Please note that this is a "Landscape Citation", not a "Statement of Significance". For further information refer to the Landscape Citation held by the City of Yarra.

Landscape Citation, 1998

Description

These plantings are contained in a row of largely intact gardens at the front of a row of boomstyle terrace houses. The plantings vary from weedy beds to reconstructed Victorian era planting schemes.

Remnant Fabric (Man Made)

Each terrace features original cast iron fences and gates set on a cut basalt plinth. The gardens consist of a central, circular bed (except No. 35), with an encaustic tile path leading from the gate to the front door. The circular garden bed and other beds within each garden are edged in scalloped terracotta tiles.

Remnant Fabric (Vegetation)

Due to the scale of the gardens, ephemeral species were mainly used in original layouts, and as such, no original plantings are present.

Statement of Significance

The gardens in the front of Barcelona Terrace are significant as largely intact remnants of Victorian terrace house gardens. Further significance is imparted for their overall intactness across the whole terrace and for their association with significant boomstyle housing.

Heritage Study/Consultant	Yarra - South Fitzroy Conservation Study, Jacobs Lewis Vines, 1979; Yarra - Fitzroy Urban Conservation Study, Allom Lovell & Associates, 1992; Yarra - City of Yarra Heritage Review, Allom Lovell & Associates, 1998; Yarra - City of Yarra Review of Heritage Overlay Areas, Graeme Butler & Associates, 2007;
Construction dates	1881,
Hermes Number	102653
Property Number	

Physical Description 2

MMBW shows with garden layout;

Integrity

Good

This place/object may be included in the Victorian Heritage Register pursuant to the Heritage Act 2017. Check the Victorian Heritage Database, selecting 'Heritage Victoria' as the place source.

For further details about Heritage Overlay places, contact the relevant local council or go to Planning Schemes Online <http://planningschemes.dpcd.vic.gov.au/>