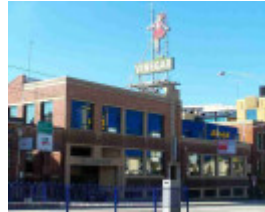

Skipping Girl Vinegar sign



Skipping Girl Sign



Skipping Girl Sign

Location

651-653 Victoria Street, ABBOTSFORD VIC 3067 - Property No 103585

Municipality

YARRA CITY

Level of significance

Registered

Victorian Heritage Register (VHR) Number

H2083

Heritage Overlay Numbers

HO353

Heritage Listing

Yarra City

Statement of Significance

Last updated on - September 8, 2008

This property is on the Victorian Heritage Register - H2083.

For more information on this property, refer to the Victorian Heritage Register information.

Heritage Study/Consultant	Yarra - City of Collingwood Conservation Study, Andrew Ward & Associates, 1989; Yarra - City of Collingwood Conservation Study, Andrew Ward & Associates, 1995; Yarra - City of Yarra Heritage Review, Allom Lovell & Associates, 1998; Yarra - City of Yarra Review of Heritage Overlay Areas, Graeme Butler & Associates, 2007;
Construction dates	1936,
Hermes Number	104257
Property Number	

Physical Description 1

The Crusader Plate building, 651-653 Victoria Street, Abbotsford, is a three storey brick Moderne building to the immediate west of the Handley & Tilley building (No. 655). The building was designed in sympathy with the Moderne Handley's complex, and has walls of the same graded brickwork, with dark brown bricks at the base, then red, warm cream and light cream at the top, finished with a painted rendered parapet. The entrance, to the east of the building, has a tall, rendered vertical panel topped with three small fins, which penetrates the parapet. Rear walls are of red brick. Windows are multi-paned, in large, rectangular openings; the glazing is not original, although the configuration of the mullions of the original steel-framed windows has been partially reconstructed in aluminium.

The Skipping Girl Vinegar neon sign depicting Little Audrey is mounted on the roof of this building.

Integrity

not assessed

This place/object may be included in the Victorian Heritage Register pursuant to the Heritage Act 2017. Check the Victorian Heritage Database, selecting 'Heritage Victoria' as the place source.

For further details about Heritage Overlay places, contact the relevant local council or go to Planning Schemes Online <http://planningschemes.dpcd.vic.gov.au/>