

Poplars



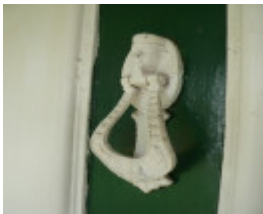
Former Harvey Farmhouse,
2000 Hamilton Highway,
Murgheboluc



Former Harvey Farmhouse,
2000 Hamilton Highway,
Murgheboluc



Former Harvey Farmhouse,
2000 Hamilton Highway,
Murgheboluc



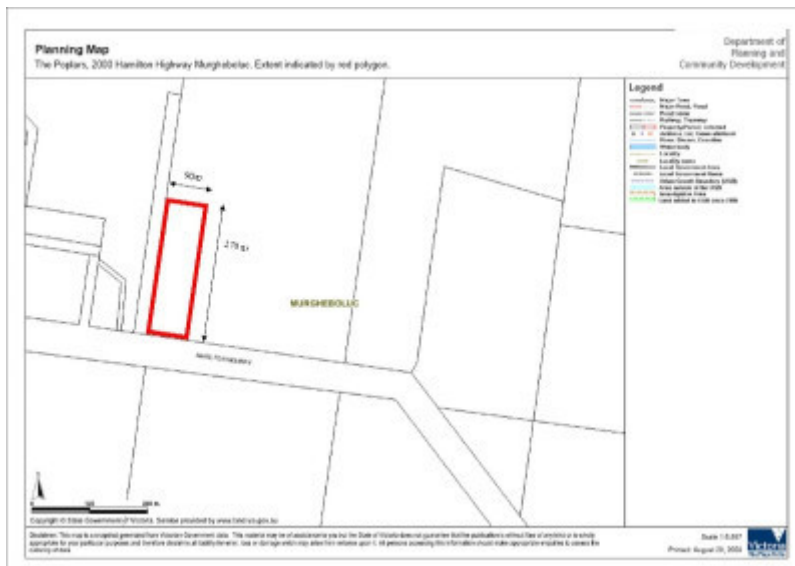
Former Harvey Farmhouse,
2000 Hamilton Highway,
Murgheboluc



Former Harvey Farmhouse,
2000 Hamilton Highway,
Murgheboluc



Former Harvey Farmhouse,
2000 Hamilton Highway,
Murgheboluc



Extent of registration map

Location

Municipality

GOLDEN PLAINS SHIRE

Level of significance

Included in Heritage Overlay

Heritage Overlay Numbers

HO140

Heritage Listing

Golden Plains Shire

Statement of Significance

Last updated on - September 25, 2009

What is Significant?

The Poplars farmhouse situated on Allotment G, Section 3, Parish of Murgheboluc, stands on land settled by Edward Harvey in the 1850s, originally comprising 160 acres on the Murgheboluc flats. Edward and his wife Rose (nee English) had four sons: James, Edward, Richard and Frederick. Each pursued an interest in agriculture, both locally and within the broader district. James Harvey (1848-1913) took over the family farm after the death of Edward (senior) in 1868. James was a Shire of Bannockburn Councillor for 46 years, and President on 12 occasions. He died in 1913 and according to his Will and Probate papers, had accumulated more than 1460 acres. He bequeathed the Poplars farmhouse to his unmarried daughters, Rachel Alice and Rose Isabel, who resided at the property until the mid twentieth century. James' sons, William and Richard, farmed Poplars in partnership following their fathers death and further increased the family's holdings within the Murgheboluc district. Williams son, James Elliot Harvey, bred Merino sheep and established a Merino stud in 1954. James Elliot also served in local government and was a Councillor for 28 years and President of Bannockburn Shire. James constructed a late twentieth century farmhouse on the Poplar property, now occupied by his son. Graeme Harvey continues to farm Poplars, operating a successful Merino stud and maintaining a tangible connection to the land first selected by Edward Harvey over 150 years ago. The original Poplars farmhouse is single-storey and now asymmetrical in plan following a late nineteenth century addition at the eastern end. The house is surrounded by extensive plantings of *Schinus molle* (Peppercorn Trees), including a distinctive grove at the south-west corner of the house. The farmhouse remains in the Harvey family and is presently occupied by tenants. The farmhouse remains substantially intact and retains a good degree of integrity.

How is it Significant?

The Poplars farmhouse at 2000 Hamilton Highway, Murgheboluc is of historical and architectural significance to the Golden Plains Shire.

Why is it Significant?

The Poplars farmhouse, 2000 Hamilton Highway, Murgheboluc is of historical significance because it is representative of the modest alluvial plain farms established in the Shire from the 1850s, a pattern of freehold settlement in contrast to the broad-acre occupation of the land by squatters. It has particular significance as the home of the Harvey Family, members of which were Councillors and Presidents of the Bannockburn Shire and long-term residents of the Murgheboluc district. The farmhouse is of architectural significance as a representative example of the modest and conservative dwellings which accommodated several generations of the one family.

Heritage Study/Consultant	Golden Plains - Golden Plains Shire Heritage Study Phase 2, Heritage Matters P/L, 2009;
Hermes Number	104346
Property Number	

Physical Description 1

The original Poplars farmhouse is located on flat ground and set well back from the Hamilton Highway. It is approached by a straight drive on the eastern side of the curtilage. The house is timber, single-storey and now asymmetrical in plan following a late nineteenth century addition at the eastern end. Originally it had an unusual 'three-quarters' facade, with two windows to the east of the front door and one to the west. The four panel front door has side lights and a transom or fanlight above. The timber panels below the side lights are filled with diagonal boards. There is a fine cast iron knocker in the Egyptian Revival style. The front windows are four-paned, double-hung sashes. The verandah is a simple timber post-supported structure with a concave roof. It is enclosed at the western end by trellis and weatherboard. The floor is now concrete. The house originally had two transverse hipped roofs and now has a perpendicular gable over the eastern extension. This gable terminates with a simple finial. The roofs are all corrugated iron. The window of the extension is tri-partite with a central two-paned double-hung sash and relatively wide side sashes. The rear elevation is similar with the same four-paned double-hung sash windows and verandah. The western half of the verandah is enclosed and partly glazed with three four-paned sashes. The enclosure has been altered. All of the chimneys are brick and have been painted. There is one small timber outbuilding of indeterminate age in the north-east corner of the back garden. The house is surrounded by extensive plantings of *Schinus molle* (Peppercorn Trees), including a distinctive grove at the south-west corner of the house.

Historical Australian Themes

The Australian Heritage Commission devised the Australian Historic Themes in 2001. The following themes have influenced the historical development of Butleigh.

3 Developing Local, Regional And National Economies

3.5 Developing primary production

3.5.1 Grazing stock

3.5.2 Breeding animals

5 Working

5.8 Working on the land

8 Developing Australia's Cultural Life

8.14 Living in the county and rural settlements

Intactness

The Poplars farmhouse is substantially intact.

Integrity

The Poplars farmhouse retains a high degree of integrity externally and in its broader landscape.

Physical Description 2

Extent of Registration: The whole of the farmhouse but excluding the interiors, all of the mature plantings especially the *Schinus molle* (Peppercorn Trees) and an area of land 90.0 m x 270.0 m in the south-west corner of Allotment G Section 3 of the Parish of Murgheboluc.

Extent of Registration

The whole of the farmhouse but excluding the interiors, all of the mature plantings especially the *Schinus molle* (Peppercorn Trees) and an area of land 90.0 m x 270.0 m in the south-west corner of Allotment G Section 3 of the Parish of Murgheboluc.

This place/object may be included in the Victorian Heritage Register pursuant to the Heritage Act 2017. Check the Victorian Heritage Database, selecting 'Heritage Victoria' as the place source.

For further details about Heritage Overlay places, contact the relevant local council or go to Planning Schemes Online <http://planningschemes.dpcd.vic.gov.au/>