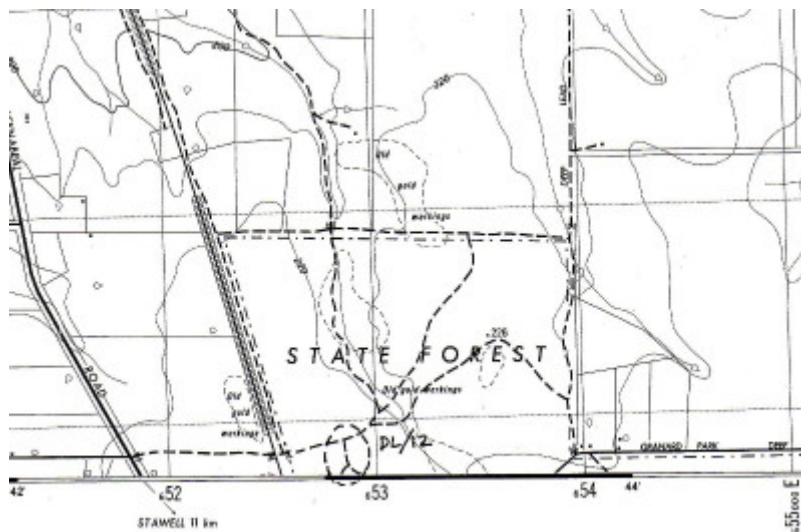


Four Post Diggings, east of east of railway, Reserve Road, DEEP LEAD



DL 12 1 - Four Posts Hotel.
Built in 1847 by a Scott John Gleeson and was burnt down in 1944. Stawell Historical Society Collection. - Shire of Northern Grampians - Stage 2 Heritage Study, 2004



DL 12 - Map Name Glenorchy XE 528 038 - Shire of Northern Grampians - Stage 2 Heritage Study, 2004

Location

east of railway, Reserve Road DEEP LEAD, NORTHERN GRAMPIANS SHIRE

Municipality

NORTHERN GRAMPIANS SHIRE

Level of significance

Recommended for Heritage Overlay

Heritage Inventory (HI) Number

H7424-0002

Heritage Listing

Northern Grampians Shire

Statement of Significance

Last updated on - July 16, 2004

The Four Post diggings former gold mining area contains a wide band of intensive shallow sinkings, including small mounds and shaft depressions. Low embankments and banks of pebbleswash mark the remains of puddling sites, although no puddlers are visible. The site of a house is marked by building rubble and an olive tree. Gold was discovered here in 1858, and the area remained a focus for alluvial mining in the Stawell division into the early 1860s, when Chinese miners also worked the field. The Four Post diggings is a relatively undisturbed and intact alluvial landscape showing both shallow sinkings and puddling sites.

The Four Post diggings are **historically** and **scientifically** important at a **LOCAL** level as a substantially intact example of an important gold mining technique. Gold mining sites are of crucial importance for the pivotal role they have played since 1851 in the development of Victoria.

Overall the Four Post diggings are of **LOCAL** significance.

Heritage Study/Consultant	Northern Grampians - Shire of Northern Grampians - Stage 2 Heritage Study, Wendy Jacobs, Vicki Johnson, David Rowe, Phil Taylor, 2004;
Hermes Number	104845
Property Number	

Physical Description 1

Sallow sinkings - wide band of intensive shallow sinkings (small mounds and shaft depressions)

House Site - Located where lead crosses gully, marked by building rubble and olive tree.

Puddling sites - Down gully (South) of house site are three low embankments and associated banks of pebbleswash. No puddlers visible.

This place/object may be included in the Victorian Heritage Register pursuant to the Heritage Act 2017. Check the Victorian Heritage Database, selecting 'Heritage Victoria' as the place source.

For further details about Heritage Overlay places, contact the relevant local council or go to Planning Schemes Online <http://planningschemes.dpcd.vic.gov.au/>