

BELVEDERE



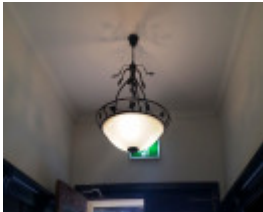
BELVEDERE SOHE 2008



1 belvedere the esplanade st
kilda front view



20150916 150309



20150916 150318



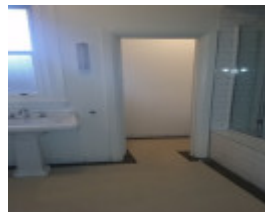
20150916 150414



20150916 150339



20150916 150426



20150916 150420



20150916 150436



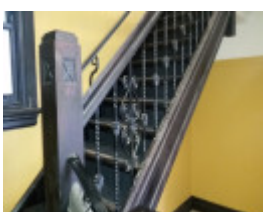
20150916 150449



20150916 150457



20150916 150650



20150916 150736



20150916 150833



20150916 150839



20150916 150846



20150916 151024



20150916 150950



20150916 151209



20150916 151321



20150916 151411



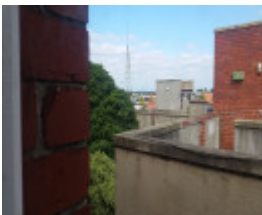
20150916 151536



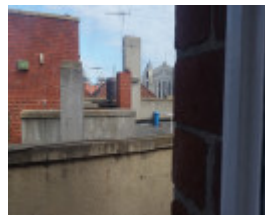
20150916 151615



20150916 151632



20151023 162720



20151023 162727



20151023 162736



20151023 164901



20151023 165019



20151023 162741



20151023 165102



20151023 165216



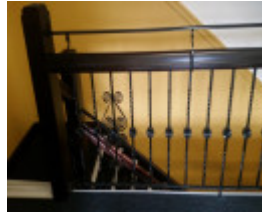
20151023 165831



20151023 165603



20151023 165304



20151023 165826



P1220462



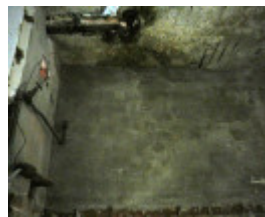
P1220463



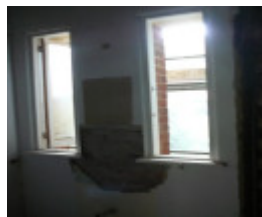
20151023 165836



P1220464



P1220465



P1220466



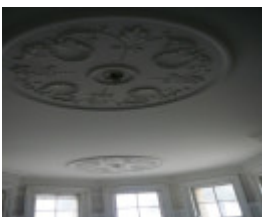
20151023 170723



P1220467



P1220468



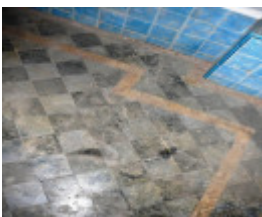
P1220472



P1220470



P1220471



P1220469



P1220473



P1220474



P1220475



P1220476



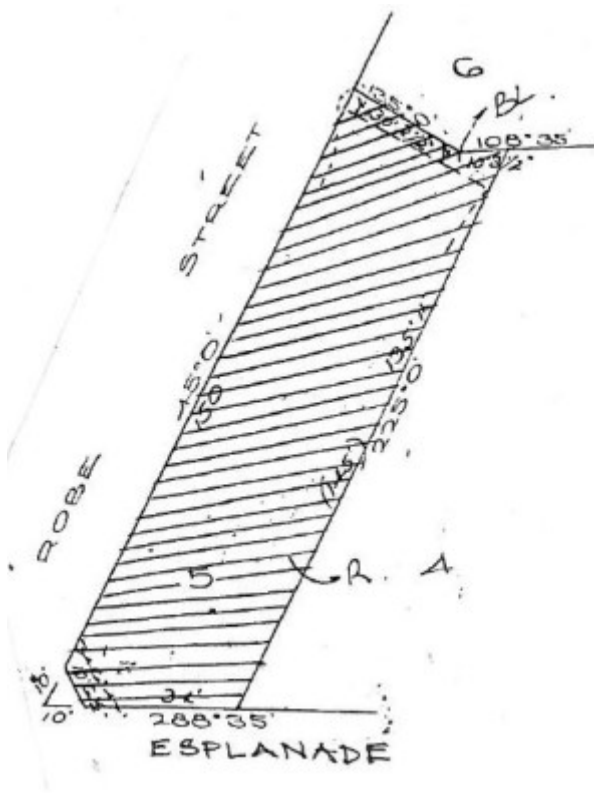
P1220477



P1220478



P1220479



H0812 H0812 plan

Location

22 THE ESPLANADE ST KILDA, PORT PHILLIP CITY

Municipality

PORT PHILLIP CITY

Level of significance

Registered

Victorian Heritage Register (VHR) Number

H0812

Heritage Overlay Numbers

HO118

VHR Registration

September 26, 1990

Amendment to Registration

September 11, 1991

Heritage Listing

Victorian Heritage Register

Statement of Significance

Last updated on - July 1, 1999

Historic buildings council - Statement of Significance:

The Belvedere, designed in 1928 by architect WH Merritt is a three storey block of flats prominently sited at the corner of the Esplanade and Robe street, St Kilda and featuring an exuberant corner belvedere designed in the Spanish mission style this is portrayed externally by the use of render work, Cordoba profile terra cotta tiles and decorative metal grillage. This portrayal is carried on in a minor way in the lobby spaces where grillage work is fixed over apartment entry doors and in the stair balusters. The larger apartments contain two bedrooms, dining room, lounge, sun- room, entry lobby, kitchen and bathroom which itself is of some interest in that the cupboard over the bath is supported by 'barley sugar twist' columns.

The building is considerably intact externally although it has been painted recently and apart from minor changes to some interiors - especially bathrooms and kitchens is considerably intact internally. The Belvedere is of architectural and historic significance as;

- one of the most sophisticated and best-surviving examples of the Spanish mission style in Melbourne;
- it was influential as an early use of the Spanish mission style in flats architecture; - as an outstanding example of the work of the architect, WH Merritt, who designed numerous flats;
- for its use of a roof deck and internal sun rooms;
- for its landmark quality on the esplanade with its seaside associations; - as the turning point in the trend towards smaller flats.

Permit Exemptions

General Exemptions:

General exemptions apply to all places and objects included in the Victorian Heritage Register (VHR). General exemptions have been designed to allow everyday activities, maintenance and changes to your property, which don't harm its cultural heritage significance, to proceed without the need to obtain approvals under the Heritage Act 2017.

Places of worship: In some circumstances, you can alter a place of worship to accommodate religious practices without a permit, but you must **notify** the Executive Director of Heritage Victoria before you start the works or activities at least 20 business days before the works or activities are to commence.

Subdivision/consolidation: Permit exemptions exist for some subdivisions and consolidations. If the subdivision or consolidation is in accordance with a planning permit granted under Part 4 of the *Planning and Environment Act 1987* and the application for the planning permit was referred to the Executive Director of Heritage Victoria as a determining referral authority, a permit is not required.

Specific exemptions may also apply to your registered place or object. If applicable, these are listed below. Specific exemptions are tailored to the conservation and management needs of an individual registered place or object and set out works and activities that are exempt from the requirements of a permit. Specific exemptions prevail if they conflict with general exemptions.

Find out more about heritage permit exemptions [here](#).

Construction dates	1929,
Architect/Designer	Merritt, WH,
Heritage Act Categories	Registered place,
Other Names	ESPLANADE,
Hermes Number	1121
Property Number	

Extent of Registration

AMENDMENT OF REGISTER OF HISTORIC BUILDINGS

Historic Building No. 812

Belvedere, 22 Esplanade, St Kilda

1. All of the buildings known as Belvedere, 22 Esplanade, St Kilda at the time of registration; and

2. All the land described in Certificate of Title Volume 8109 Folio 930.

[*Victoria Government Gazette* No. G35 11 September 1991 p.2547]

This place/object may be included in the Victorian Heritage Register pursuant to the Heritage Act 2017. Check the Victorian Heritage Database, selecting 'Heritage Victoria' as the place source.

For further details about Heritage Overlay places, contact the relevant local council or go to Planning Schemes Online <http://planningschemes.dpcd.vic.gov.au/>