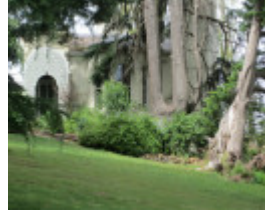

The Towers



Entrance



House

Location

6-9 The Eyrie, LILYDALE VIC 3140 - Property No 6672

Municipality

YARRA RANGES SHIRE

Level of significance

Included in Heritage Overlay

Victorian Heritage Register (VHR) Number

H0612

Heritage Overlay Numbers

HO4

Heritage Listing

Yarra Ranges Shire

Statement of Significance

Last updated on - April 7, 2021

One of the region's largest and most elaborate buildings - historically and architecturally significant. For long, one of the region's most famous wineries. Its unique architectural style, with a mixing of architectural elements in distinct building stages, make it architecturally significant. (Tansley, 1978)

The house is architecturally notable for the way in which the early house has been combined with substantial later

additions and is important also for both its cellars and as a very late example of castellated Gothic architecture, applied in this case to an otherwise Classical revival design. The porch is an unusual and notable feature. (RNE, 005703)

The Towers has significant associations with the development of viticulture in the Yarra Valley which was centred on Lilydale. It was an area renowned for the high quality of its wines. Although the complex is of uncertain architectural origins, it is representative of an important facet of architectural style in the Victorian era. (VHR, H612)

Heritage Study/Consultant	Yarra Ranges - Shire of Yarra Ranges Heritage Study, Context Pty Ltd, 2000;
Construction dates	1876, 1886, 1909,
Other Names	House,
Hermes Number	115880
Property Number	

Physical Description 1

This large elaborate homestead has two notable towers. (Tansley, 1978) The Towers has had its grounds subdivided and is now on a suburban allotment. (RNE, 005703)

Physical Conditions

Excellent

This place/object may be included in the Victorian Heritage Register pursuant to the Heritage Act 2017. Check the Victorian Heritage Database, selecting 'Heritage Victoria' as the place source.

For further details about Heritage Overlay places, contact the relevant local council or go to Planning Schemes Online <http://planningschemes.dpcd.vic.gov.au/>