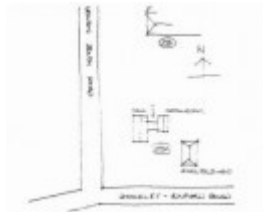


---

# Former Parwan South School (Nerowie) State School No 4175 & Mechanics Institute



Former School &  
Mechanics Institute



Former School &  
Mechanics Institute



Former School &  
Mechanics Institute

---

## Location

NE corner of Parwan South Road and Nerowie Road BALLIANG, MOORABOOL SHIRE

## Municipality

MOORABOOL SHIRE

## Level of significance

Included in Heritage Overlay

## Heritage Overlay Numbers

HO196

## Heritage Listing

Moorabool Shire

---

## Statement of Significance

Last updated on - June 1, 1995

A former state school, funded by the Parwan South community and leased by the Department of Education, operating 1923-1949. It was then used for community purposes and known as Parwan South Mechanics' Institute. There is a shelter shed and remnant vegetation.

Of regional significance for its association with an extraordinary movement toward provision of education in the local community of Parwan South and government action in response. This is a rare instance of the Education Department being persuaded to lease a virtually sub-standard building erected by the community. Of interest also for its subsequent association with local sporting and social activities. Locally significant also as part of the identity of Parwan and as a traditional community focus and meeting place.

Heritage Study/Consultant	Moorabool - Bacchus Marsh Heritage Study 1995, Richard Peterson and Daniel Catrice, 1995;
Architect/Designer	H.B. Corben & Sons,
Other Names	Parwan South (Nerowie) State School No. 4175 & Mechanics' Institute,
Hermes Number	116319
Property Number	

---

## Physical Conditions

Sheeting of one opening is coming away. Lining of sheltershed has been poorly removed. Neglect and lack of care for the past ten years. More detailed inspection is recommended.

## Intactness

Fair. Windows are sealed with steel sheet.

## Physical Description 1

Three timber buildings in a setting of eucalypts. The largest has a gable-roof. It is 26 x 16 feet (7.9 x 4.9m). A similar smaller gable-roofed building 10 x 8 feet (3 x 2.4m): has two flues, and a lower pitch roof. They are linked by a corrugated iron room 6 x 6 feet (1.8 x 1.8m). The third building is a characteristic shelter shed, with a hip-roof; lattice-lined upper walls and an opening in one side 14 x 8 feet (4.3 x 2.4).

## Historical Australian Themes

Community Life

## Usage/Former Usage

USE: Derelict?

*This place/object may be included in the Victorian Heritage Register pursuant to the Heritage Act 2017. Check the Victorian Heritage Database, selecting 'Heritage Victoria' as the place source.*

*For further details about Heritage Overlay places, contact the relevant local council or go to Planning Schemes Online <http://planningschemes.dpcd.vic.gov.au/>*