

Butleigh



1754 Hamilton Hwy
Murgheboluc Butleigh,
bluestone section.



116813 1754 Hamilton Hwy
Murgheboluc Butleigh 523



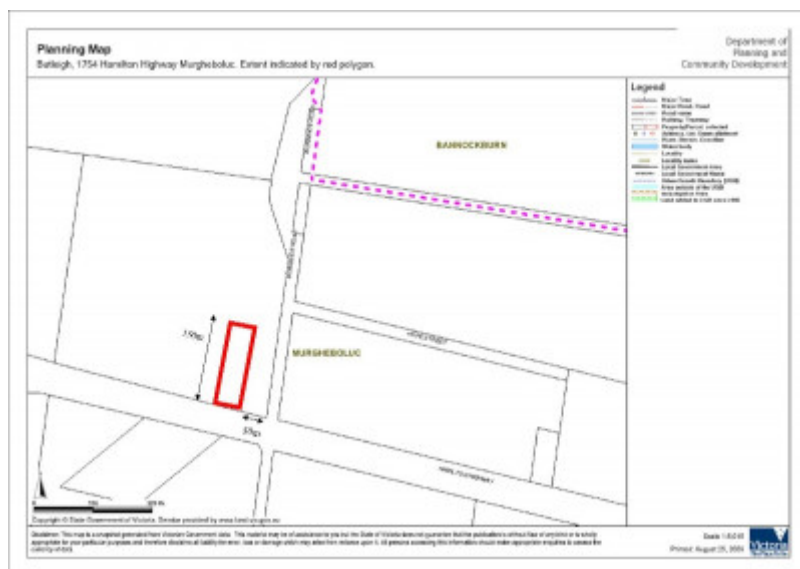
116813 1754 Hamilton Hwy
Murgheboluc Butleigh 524



116813 1754 Hamilton Hwy
Murgheboluc Butleigh 527



116813 1754 Hamilton Hwy
Murgheboluc Butleigh 521



Extent of registration map

Location

1754 HAMILTON HIGHWAY, MURGHEBOLUC VIC 3221 - Property No 23600265

Municipality

GOLDEN PLAINS SHIRE

Level of significance

Included in Heritage Overlay

Heritage Overlay Numbers

HO142

Heritage Listing

Golden Plains Shire

Statement of Significance

Last updated on -

What is significant?

Butleigh, 1754 Hamilton Highway, Murgheboluc was a small farm located on the eastern side of the Barwon River Valley overlooking Bruce's Creek. It was established by Samuel Morris junior, a Welshman who migrated with his parents, Samuel and Ann Morris in 1853 and purchased the land from the Crown. A small house was built comprising two parts, a vernacular timber wing subsequently altered and extended and a bluestone wing with a gracious verandah accessed by French doors which faced the extensive view to the west. Samuel Morris junior became Engineer for the Shire of Bannockburn as well as fulfilling other minor public and community roles. He probably designed both early sections of Butleigh, both the vernacular timber service wing and the rather more pretentious stone wing with its verandah and French doors opening towards the garden and the view. Samuel Morris junior married Catherine McGill of Geelong in 1871 and they had two daughters, Edith and Olive. Samuel died in 1911. Butleigh passed on to the neighbouring Morgan family. William Morgan and his wife Elizabeth had arrived in Australia in 1841. Edward Morgan and his wife Frances conducted a mixed farm and a horse stud at Butleigh. The property remained with the Morgan family until the end of the twentieth century. The original buildings are reasonably intact with a fair degree of integrity and are in fair condition. The relocation of an Interwar bungalow has compromised the interpretation of the site. There are important mature plantings which compliment the original buildings.

How is it Significant?

Butleigh, Hamilton Highway, Murgheboluc is of historical and architectural significance to the Golden Plains Shire.

Why is it Significant?

Butleigh, 1754 Hamilton Highway, Murgheboluc is of historical significance for its occupation by the extended Morris family and subsequently the Morgan family. It has particular significance as the home of Samuel Morris, Bannockburn Engineer. It is representative of the modest riverside farms established in the shire from the 1850s, a pattern of freehold settlement in contrast to the broad-acre occupation of the land by squatters. Butleigh is of architectural significance as a representative example of the humble vernacular dwellings, in this case with an extra stone wing with some architectural pretension, which accommodated often very large families on small farms. Its deliberately elevated situation and surrounding plantings add to the significance of the place.

Heritage Study/Consultant	Golden Plains - Golden Plains Shire Heritage Study Phase 2, Heritage Matters P/L, 2009;
Hermes Number	116813
Property Number	

Physical Description 1

woOriginally Butleigh comprised two parts, a single-storey bluestone section at the front and a timber section at the rear. The front section is unusual because, rather than a main entrance, it has had two French doors, one of which has been replaced, perhaps in the 1870s, with a four-pane double-hung sash window. The timber verandah has collapsed. The bluestone section has a small stone skillion at the rear, once open but now partly enclosed in timber. The timber section at the rear is small in scale, vernacular in form and simply detailed. There are two traditional brick chimneys, one of which identifies the kitchen. The timber section may pre-date the bluestone section but has been extended and altered, most recently in the 1960s. It is now further modified by the relocation of an Interwar timber bungalow from Geelong. A well survives on the northern end of the bluestone section. The original buildings are reasonably intact and have a fair degree of integrity. They are in fair condition with evidence of long term cracking in the bluestone section. There are several mature plantings near the house towards the south-west, the most important of these are several *Pinus pinea* (Stone Pines) and *Pinus radiata* (Radiata or Monterey Pines). Near the house are *Schinus molle* (Peppercorn Trees) but these are smaller and probably not so old. The property was formerly accessed from the Hamilton Highway and a sense of approach from that direction survives.

Historical Australian Themes

The Australian Heritage Commission devised the Australian Historic Themes in 2001. The following themes have influenced the historical development of Butleigh.

3 Developing Local, Regional And National Economies

3.5 Developing primary production

3.5.1 Grazing stock

3.5.2 Breeding animals

5 Working

5.8 Working on the land

7. Governing

7.6 Administering Australia

7.6.1 Developing local government authorities

8 Developing Australia's Cultural Life

8.14 Living in the county and rural settlements

Intactness

The intactness of the timber section of the house has been compromised by mid twentieth century alterations and modifications following the relocation of the Interwar bungalow. The intactness of the stone section of the house has been compromised by the collapse of the verandah.

There seems to be little or no garden surviving from the nineteenth and early twentieth century. Many mature plantings survive to the south of the house including trees associated with the original drive.

Integrity

The integrity of what survives from the nineteenth century of the stone section seems good. The integrity of the timber section is poor.

Physical Description 2

Extent of Registration: The suggested extent of registration is the whole of the house, both timber and stone sections but excluding their interiors and the relocated Interwar bungalow, the well and the major plantings and all of the land shown hatched on the plan comprising the Hamilton Highway boundary for 50m starting 50m from the intersection with Burnside Road, a line perpendicular to the Highway for 150m, a line heading east for 50m and a line heading south towards the Highway for approximately 1500m.

Extent of Registration

Butleigh, to the extent of the exteriors of the original buildings, the mature plantings and the curtilage as defined in the map.

This place/object may be included in the Victorian Heritage Register pursuant to the Heritage Act 2017. Check the Victorian Heritage Database, selecting 'Heritage Victoria' as the place source.

For further details about Heritage Overlay places, contact the relevant local council or go to Planning Schemes Online <http://planningschemes.dpcd.vic.gov.au/>