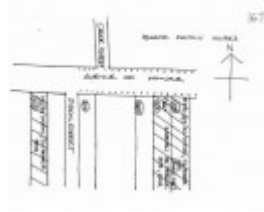


---

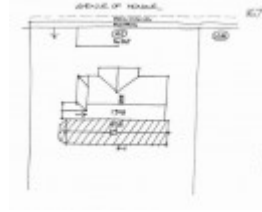
## Dwelling, Waratah



House, Waratah



House, Waratah



House, Waratah



House, Waratah

---

### Location

267 Avenue of Honour BACCHUS MARSH, MOORABOOL SHIRE

### Municipality

MOORABOOL SHIRE

### Level of significance

Included in Heritage Overlay

### Heritage Overlay Numbers

HO116

### Heritage Listing

Moorabool Shire

---

### Statement of Significance

Last updated on - June 1, 1995

What is significant?

The Residence and its setting at 267 Main Street, Bacchus Marsh.

How is it significant?

The Residence and its setting at 267 Main Street, Bacchus Marsh is of local historical and aesthetic significance to the Shire of Moorabool.

Why is it significant?

The Residence and its setting at 267 Main Street, Bacchus Marsh is of local historical significance for its early date of construction (original building 1878) demonstrating the early settlement of Bacchus Marsh. With extensive alterations undertaken in 1908 by prominent Melbourne architect A. S. Eggleston, the property is also of historical significance for its representation of the early 20th century boom period for Bacchus Marsh. The 1908 additions illustrate the prosperity experienced by the Pearce family during this period. It is of historical significance for its associations with important and influential business figure in Bacchus Marsh, Ebenezer Pearce and prominent Melbourne architect A. S. Eggleston.

The Residence and its setting at 267 Main Street, Bacchus Marsh is of local aesthetic significance as a late Victorian Picturesque Gothic villa with its rectangular plan, tall gable roof, chimneys with classical mouldings and gable ends with curved Gothic decoration and finials. The 1908 front alterations although undertaken in the Edwardian period are of aesthetic significance as an early example of the Californian Bungalow style which developed more in the 1920s. Features of note include the roughcast walls, gambrel roof with a projecting centre bay with a gable roof, roughcast pylon chimneys with pots, timber verandah with curved valance, and red brick arched entry.

Heritage Study/Consultant	Moorabool - Bacchus Marsh Heritage Study 1995, Richard Peterson and Daniel Catrice, 1995;
Architect/Designer	Eggleston, AS,
Hermes Number	117426
Property Number	

---

## Physical Conditions

Excellent

## Intactness

The render is generally painted. Garden, gates and fence are generally recent, but very good and sympathetic.

SIGNIFICANT INTACT ELEMENTS:

FORM. FACADE. VERANDAH. ROOF FORM.

EAYES DECORATION. ROOF DECORATION. VERANDAH DECORATION.

CHIMNEYS. DOORS. WINDOWS. PAINTWORK SCHEME.

STREET FURNITURE. HEDGES.

## Physical Description 1

A late Victorian Picturesque Gothic villa, rectangular in plan and rendered brick. The chimneys (unpainted) have Classical mouldings. Gable ends have curved Gothic decoration and finials and at right is a canted bay. In front of this is a roughcast Californian Bungalow addition. It has a half-hip roof; and is triple-fronted. The centre bay is set forward as a gable. The upper section has timbered rails. There are roughcast pylon chimneys with pots. The verandah at right is an angle to the side entrance, which projects as a gable. The timber verandah has a curved valance of vertical rails and Doric posts. The entry is arched red tuck-pointed bricks with label moulds.

## Physical Description 2

The Garden. The garden has elements remnant of the periods of the house. The property is enclosed with a well clipped and maintained evergreen coniferous hedge, behind a closed picket fence. The height of the hedge is maintained to 3.0 to 3.5 metres.

Hedge species:

*Cupressus torulosa*, Bhutan Cypress

## Historical Australian Themes

Townships

*This place/object may be included in the Victorian Heritage Register pursuant to the Heritage Act 2017. Check the Victorian Heritage Database, selecting 'Heritage Victoria' as the place source.*

*For further details about Heritage Overlay places, contact the relevant local council or go to Planning Schemes Online <http://planningschemes.dpcd.vic.gov.au/>*