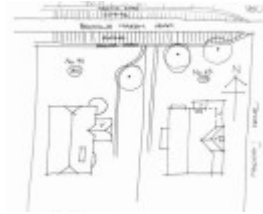


---

## Dwelling, Banool



House, Banool



House, Banool



House, Banool

---

### Location

51 Main Street, Stamford Hill BACCHUS MARSH, MOORABOOL SHIRE

### Municipality

MOORABOOL SHIRE

### Level of significance

Included in Heritage Overlay

### Heritage Overlay Numbers

HO98

### Heritage Listing

Moorabool Shire

---

### Statement of Significance

Last updated on - July 10, 2015

What is significant?

The House and its setting at 51 Main Street, Bacchus Marsh.

How is it significant?

The House and its setting at 51 Main Street, Bacchus Marsh is of local historical and aesthetic significance to the Shire of Moorabool.

Why is it significant?

The House and its setting at 51 Main Street, Bacchus Marsh is of local historical significance as a representative embodiment of a comfortable way of life with its social values of the late 1920s, due to the expansion of orcharding in the area and before the world economic collapse. It is also significant for its associations with auctioneer Laurence Dugdale, a well-known local figure. The prominence of Mr. Dugdale in the town is demonstrated by the grand setting of the residence on the hill, and this reflects the high prices for land being gained in the area during this period.

The House and its setting at 51 Main Street, Bacchus Marsh is of aesthetic significance as an excellent intact example of a fine large roughcast brick Californian Bungalow, set well back and elevated in a large garden. Features of particular note on the house include the half-hipped roof, entry porch with Doric columns and brick balustrade, bow windows, attic window, shingle cladding to gable ends, and clinker brick banding to the walls. The surrounding garden, and front rubble stone wall and wrought iron gates, contribute to the aesthetic significance of the property.

Heritage Study/Consultant	Moorabool - Bacchus Marsh Heritage Study 1995, Richard Peterson and Daniel Catrice, 1995;
Hermes Number	117473
Property Number	

---

## Physical Conditions

Very Good

## Intactness

Excellent

SIGNIFICANT INTACT ELEMENTS:

FORM. FACADE. VERANDAH. ROOF FORM. PLAN.

VERAN DAH DECORATION.

WALL DECORATION. DOORS. WINDOWS. PAINTWORK SCHEME.

UNPAINTED FIN1SH.

FENCES.

GARDEN.

SIGNIFICANCE:

## Physical Description 1

A triple-fronted brick (unpainted) roughcast Californian Bungalow set well back and elevated in a large garden. It is essentially a rectangular pavilion, its end facing Bacchus Marsh Road with a half-hipped roof of grey concrete Marseilles pattern tiles. A minor half-hip projects, below the eaves line, at left as the entry porch on Doric

columns, on a brick balustrade.

At the leading corner is a three-quarter circle bow window. Its window has five facets. There is a shallow bow window at the far end of the front and a skillion attic window. Upper gables and bows have timber shingle cladding. Rafters are expressed. There are clinker brick bands at dado cornice line and a shallow curve at the entry. An oculus window interrupts the band. Paint colours could well be original: grass green; joists and window joinery cream.

There is a serpentine drive and rubble basalt fence.

## **Historical Australian Themes**

### **Townships**

*This place/object may be included in the Victorian Heritage Register pursuant to the Heritage Act 2017. Check the Victorian Heritage Database, selecting 'Heritage Victoria' as the place source.*

*For further details about Heritage Overlay places, contact the relevant local council or go to Planning Schemes Online <http://planningschemes.dpcd.vic.gov.au/>*