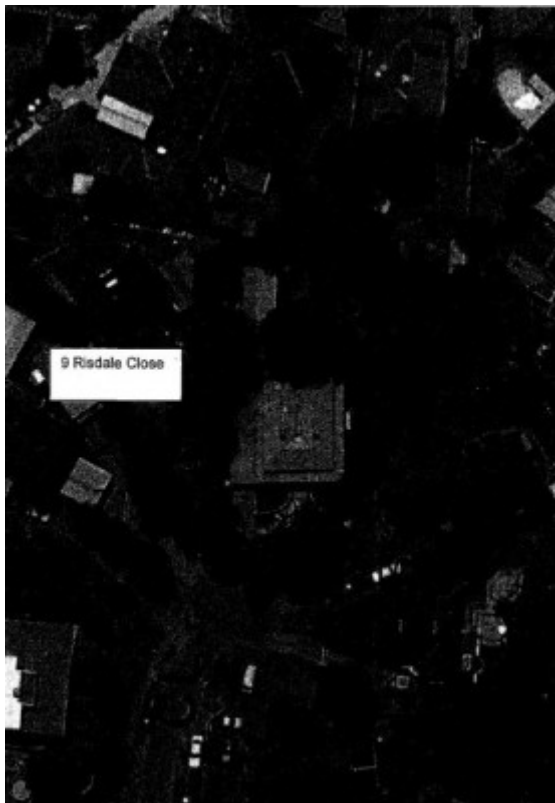


---

# HO244 - Wadeson house, 9 Risdale Close, Diamond Creek



HO244 - Wadeson house



HO244 - WADESON HOUSE 9 Risdale Close Diamond Creek

---

## Location

9 Risdale Close DIAMOND CREEK, NILLUMBIK SHIRE

## Municipality

NILLUMBIK SHIRE

## Level of significance

Included in Heritage Overlay

## Heritage Overlay Numbers

HO244

## Heritage Listing

Nillumbik Shire

---

## Statement of Significance

Last updated on - August 28, 2009

HERITAGE VALUE 2005: Local

SIGNIFICANCE ASSESSMENT

What is significant?

Fabric associated with:

-the Victorian-era

-Richard Wadeson tenure

How is it significant?

The Wadeson house is historically and architecturally significant to Diamond Creek

Why is it significant?

The Wadeson house is significant:

-as one of the early houses in the town (Criterion A4) and

-a well preserved example of the Italianate suburban style, as distinguished by its relative size for the period (Criterion E1)

-for the association with Richard Wadeson, a Diamond Creek gardener and orchardist (Criterion H1)

Heritage  
Study/Consultant

Nillumbik - C13 Heritage Stage 2 Final Report Revised Citation, Graeme Butler and  
Assoc., 2001;

Hermes Number

118662

Property Number

---

## Physical Description 1

### DESCRIPTION

This timber Italianate style, verandahed house is now set at the end of a suburban court but was once a Victorian-era orchard house set in over 40 acres, presumably of fruit trees. Clad with ashlar timber 'blocks' the house was intended to resemble stone and has an elegant concave form return verandah, with cast-iron friezes. Typically symmetrical, the house has two cemented chimneys, an M-hip roof clad with corrugated iron, carved eaves brackets, and a pair of three-light double-hung sash windows set either side of a six-panel door with panelled side and top-lights. '

There is an outbuilding at the rear with a gabled corrugated iron roof.

## Physical Description 2

### Integrity

A carport has been attached to the verandah on one side, reducing the impact of the return verandah form

## Physical Description 3

### Context

Set in a recent visually unrelated suburban residential estate.

*This place/object may be included in the Victorian Heritage Register pursuant to the Heritage Act 2017. Check the Victorian Heritage Database, selecting 'Heritage Victoria' as the place source.*

*For further details about Heritage Overlay places, contact the relevant local council or go to Planning Schemes Online <http://planningschemes.dpcd.vic.gov.au/>*