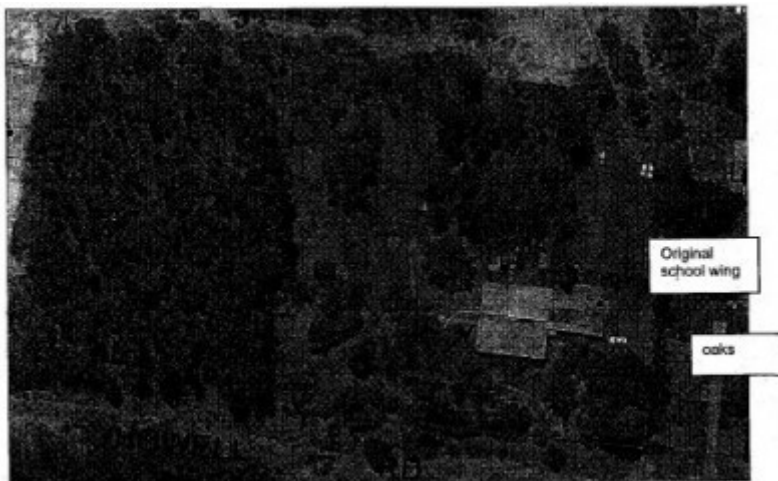


Two Oak Trees on former Plenty Primary School site



HO213 - Plenty State School
4093- former School from
south, at rear behind oaks



HO213 - Plenty State School 4093- Plan prepared from recent aerial image

Location

2 Fineran Court PLENTY, NILLUMBIK SHIRE

Municipality

NILLUMBIK SHIRE

Level of significance

Included in Heritage Overlay

Heritage Overlay Numbers

HO213

Heritage Listing

Nillumbik Shire

Statement of Significance

Last updated on - February 18, 2018

Site of former Plenty Primary School. Building removed off site as part of 183/2013/14P but two English Oaks remain on Lot 12. The address has also changed from 17 Howell Road to 2 Fineran Court.

In 2013 an application was received to demolish all the remaining school buildings on the site, including the original school building. It was is proposed to retain the two English oaks.

The application included a Heritage Impact Statement for the property which indicated that the original school building which is of historical and social significance had been extensively altered and extended, and that following demolition of the building, on site interpretation will be incorporated into the subdivision, including the retention of two historically significant English Oaks.

Significance of Oak Trees

The two English Oaks (*Quercus robur*) located at 2 Fineran Court, Plenty are historically significant for their associations with the use and history of the site as the Plenty State School. The Oaks that were planted beside the entry driveway indicate the original entry point to the school site and now the school building and front hedge have been removed, they are the only tangible remnants indicating the school use and history of the site.

Heritage Study/Consultant	Nillumbik - C13 Heritage Stage 2 Final Report Revised Citation, Graeme Butler and Assoc., 2001;
Hermes Number	118807
Property Number	

Physical Description 1

DESCRIPTION

This Victorian Public Works Department designed weatherboard former school has been greatly enlarged by the addition of many skillion form portable additions from the 1960s. The original school room has overlapping gabled and strutted roof forms clad with corrugated iron, shingled gable ends with a louvred vent, a tall red brick chimney, multi-paned timber-framed windows (typically altered and enlarged).

There is a Monterey cypress hedge at the front of the school yard (damaged) with semi-mature oaks along the drive and young Monterey pines at the rear.

Physical Description 2

Integrity

The external shelter area has been infilled and openings altered on the original building. Many skillion form portable additions have been added from (-/ the 1960s and a chain wire front fence.

Physical Description 3

Context

Set on a hill above the Plenty hall and near the recreation reserve, as part of the civic centre of this small community

Physical Description 4

Site of former Plenty Primary School. Building removed off site as part of 183/2013/14P but two English Oaks remain on Lot 12. The address has also changed from 17 Howell Road to 2 Fineran Court.

In 2013 an application was received to demolish all the remaining school buildings on the site, including the original school building. It was is proposed to retain the two English oaks.

The application included a Heritage Impact Statement for the property which indicated that the original school building which is of historical and social significance had been extensively altered and extended, and that following demolition of the building, on site interpretation will be incorporated into the subdivision, including the retention of two historically significant English Oaks.

The Oaks that were planted beside the entry driveway indicate the original entry point to the school site and now the school building and front hedge have been removed, they are the only tangible remnants indicating the school use and history of the site.

This place/object may be included in the Victorian Heritage Register pursuant to the Heritage Act 2017. Check the Victorian Heritage Database, selecting 'Heritage Victoria' as the place source.

For further details about Heritage Overlay places, contact the relevant local council or go to Planning Schemes Online <http://planningschemes.dpcd.vic.gov.au/>