

# CROSSROADS UNITING CHURCH

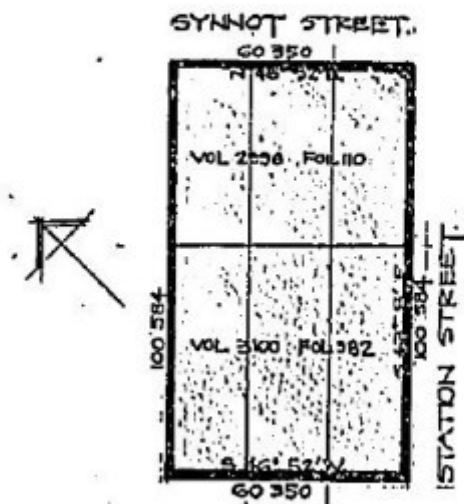


CROSSROADS UNITING CHURCH SOHE 2008



1 crossroads uniting church  
werribee tower detail

## EXTENT OF DESIGNATION (SUMMARY)



h00628 plan h0628

## Location

19-21 DUNCANS ROAD AND 33A SYNNOT STREET WERRIBEE, WYNDHAM CITY

## Municipality

WYNDHAM CITY

## Level of significance

Registered

## Victorian Heritage Register (VHR) Number

H0628

## Heritage Overlay Numbers

HO1

## VHR Registration

October 1, 1986

## Heritage Listing

Victorian Heritage Register

---

## Statement of Significance

Last updated on - August 19, 2024

### What is significant?

In 1884 Thomas Chirnside of Werribee Park erected the bluestone St Thomas's Presbyterian Church and manse on his own land at Werribee. The entire cost of the construction of the two buildings, £3500 was paid by Chirnside.

Messrs Harding and Holyoak of Geelong built the church and manse designed by the eminent Geelong and western district architect Alexander Davidson.

The church is the last of a small number of churches designed by Davidson and his partner George Henderson in the French Gothic mode which they favoured. It features a distinctive octagonal tower with engaged colonettes and a stone spire. The initials TC form part of the design of an iron weathervane at the top of the spire. The interior of the church is notable for its timber ceiling and roof trusses decorated with carved eagles, the Chirnside family emblem. In this respect the interior resembles the billiard room addition built in 1883 at Werribee Park and also designed by Davidson.

In 1897 George Chirnside (a nephew of Thomas Chirnside) had a family pew made for the church. Originally containing six seats the elaborately carved English oak pew was raised and enlarged in 1956 to accommodate the choir.

The bluestone manse is a highly intact single storey domestic building with double gable ends and fretwork bargeboards to the street elevation. The front verandah features the distinctive patent case iron details which were characteristic of the work of Davidson and Henderson. The verandah columns and decorative cast iron brackets are identical in pattern to those at Narrapumelap homestead, Wickliffe, designed by Davidson and Henderson in 1872.

St Thomas's church and manse are together an important part of the built evidence of the Chirnside association with the Werribee area, Werribee Park and Point Cook. These two buildings and the land are illustrative of the patronage by which Thomas Chirnside sought to recreate in Werribee the way of life of an English country gentleman.

**How is it significant?**

**Why is it significant?**

## Permit Exemptions

## General Exemptions:

General exemptions apply to all places and objects included in the Victorian Heritage Register (VHR). General exemptions have been designed to allow everyday activities, maintenance and changes to your property, which don't harm its cultural heritage significance, to proceed without the need to obtain approvals under the Heritage Act 2017.

**Places of worship:** In some circumstances, you can alter a place of worship to accommodate religious practices without a permit, but you must **notify** the Executive Director of Heritage Victoria before you start the works or activities at least 20 business days before the works or activities are to commence.

**Subdivision/consolidation:** Permit exemptions exist for some subdivisions and consolidations. If the subdivision or consolidation is in accordance with a planning permit granted under Part 4 of the *Planning and Environment Act 1987* and the application for the planning permit was referred to the Executive Director of Heritage Victoria as a determining referral authority, a permit is not required.

Specific exemptions may also apply to your registered place or object. If applicable, these are listed below. Specific exemptions are tailored to the conservation and management needs of an individual registered place or object and set out works and activities that are exempt from the requirements of a permit. Specific exemptions prevail if they conflict with general exemptions.

Find out more about heritage permit exemptions [here](#).

Construction dates	1884,
Architect/Designer	Davidson, Alexander,
Heritage Act Categories	Registered place,
Other Names	THOMAS'S, ST THOMAS PRESBYTERIAN CHURCH,
Hermes Number	1206
Property Number	

---

## History

Associated People: Assoc.People THOMAS CHIRNSIDE

## Extent of Registration

### AMENDMENT OF REGISTER OF HISTORIC BUILDINGS

Historic Building No. 628 - Former St Thomas' Uniting Church, Cnr. Synott Street and Duncans Road, Werribee to the extent of the Church, the bluestone manse and the whole of the land in Volume 2996 Folio 110 and Volume 3100 Folio 982.

[*Victoria Government Gazette* No. 80 1 October 1986 p. 3785]

*This place/object may be included in the Victorian Heritage Register pursuant to the Heritage Act 2017. Check the Victorian Heritage Database, selecting 'Heritage Victoria' as the place source.*

For further details about Heritage Overlay places, contact the relevant local council or go to Planning Schemes Online <http://planningschemes.dpcd.vic.gov.au/>