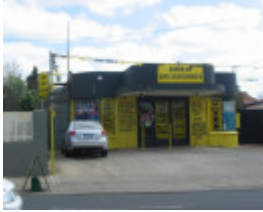


---

# FORMER BP DRIVE-IN SERVICE STATION



550 Bell Street

---

## Location

548 BELL STREET,, PRESTON VIC 3072

## Municipality

DAREBIN CITY

## Level of significance

Included in Heritage Overlay

## Heritage Overlay Numbers

HO202

## Heritage Listing

Darebin City

---

## Statement of Significance

Last updated on - November 24, 2009

### *What is significant?*

The former BP drive-in service station, built c.1950, at 548 Bell Street, Preston is significant. The design, original external detailing and siting of the building behind an open forecourt contributes to the significance of the place.

Non-original alterations and additions to the c.1950 building, later buildings on the site and signage are not significant.

### *How is it significant?*

The former BP drive-in service station at 548 Bell Street, Preston is of local historic and architectural significance to the City of Darebin.

### *Why is it significant?*

The former drive in service station at 548 Bell Street, Preston is historically significant as a building that is associated with the phenomenal growth in motor car ownership and the development of associated facilities following the Second World War. (Criterion A)

The former drive in service station at 548 Bell Street, Preston is architecturally significant as a representative example of the kerb side design of service stations that emerged as a new building type in the inter war period. It provides evidence of the moderne streamlined design that was influenced by motor car design and by the need for a new form of building type to be designed in the most up to date styles, many with art deco characteristics. The significance of the place is enhanced by its rarity value as the only known example of this type in Darebin and one of the few early examples to survive in the metropolitan area (Criteria B & D)

Heritage Study/Consultant Darebin - Darebin Heritage Study, Context P/L, 2011;

Construction dates 1950,

Hermes Number 120742

Property Number

---

## **Historical Australian Themes**

### **5. Building suburban Darebin**

#### 5.3 Developing the suburban ideal

### **Physical Description 1**

The former drive in service station at 548 Bell Street, Preston is designed in a streamlined moderne style with a flat roof concealed by brick parapets. The moderne style is illustrated by the curved brickwork and glazing. The building is of a compact design with the main design feature being a concrete cantilevered canopy that overhangs the central driveway area. Above the canopy a curved brick parapet repeats the main form of the flanking wings. The soffit lining to the canopy is in pressed metal in a ribbed profile and appears to be the original lining.

The original surface of the brickwork was unpainted banded brickwork in salmon and brown bricks but it has been painted at the front (the sides of the building are left unpainted). The symmetrical composition of the central doorway is flanked by curved windows either side and these appear to be in their original metal frames.

The building itself is in good condition and has a relatively high degree of external integrity. The driveway apron still exists, however other evidence of its former use as a petrol station (such as the petrol pumps and signage) are now missing.

*This place/object may be included in the Victorian Heritage Register pursuant to the Heritage Act 2017. Check the Victorian Heritage Database, selecting 'Heritage Victoria' as the place source.*

*For further details about Heritage Overlay places, contact the relevant local council or go to Planning Schemes Online <http://planningschemes.dpcd.vic.gov.au/>*