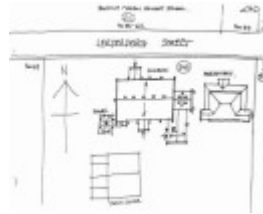


---

# Saint Bernard's Church, Presbytery and Parish Centre,



St Bernard's Church,  
Presbytery and Parish  
Centre,



St Bernard's Church,  
Presbytery and Parish  
Centre,

---

## Location

63 Lerderderg Street BACCHUS MARSH, MOORABOOL SHIRE

## Municipality

MOORABOOL SHIRE

## Level of significance

Included in Heritage Overlay

## Heritage Overlay Numbers

HO92

## Heritage Listing

Moorabool Shire

---

## Statement of Significance

Last updated on - June 1, 1995

A brick Decorated Gothic Victorian church, designed by H.R. Caselli in 1871 and opened in 1874.

The eclectic brick two-storey Edwardian presbytery was designed by Mr McMullen in 1888 and opened in 1889.

The group is of local historical significance for its association with the religious development in the community life of the town. It has architectural significance as an intact surviving representative example of the Victorian Decorated Gothic style and the eclectic Edwardian of the presbytery

Heritage Study/Consultant	Moorabool - Bacchus Marsh Heritage Study 1995, Richard Peterson and Daniel Catrice, 1995;
Construction dates	1871, 1888, 1911,
Architect/Designer	McMullen, George, Caselli, Henry R, Rice, Charles,
Hermes Number	124249
Property Number	

---

## Physical Description 1

*Exterior* . A gable-roofed Decorated Gothic tuckpointed red brick church with a slate roof, aligned parallel to Lerderberg Street, this is to liturgical direction. It has five bays to the nave, a chancel with a vestry on its southern side, two porches opening into the nave sides and a tower. The windows have lancet pairs and quatrefoil, with foliate labels formed from Celtic bands.

The west front has an upper large triple lancet window, with a six-foil light over. Below are two small lancets. All lancets inscribe ogee arches with cusps . Buttresses terminate in gables, with cruciform ridges. There is a rock-face base, generally. There are skillion vents to the roof Porches, chancel and vestry have gable roofs, and porches are rendered. .

The tower has a substantial base, soon reducing with a stop-chamfer to an octagon. It is

quite severe, eventually reducing to a timber belfry, with lancets inscribing trefoils with labels, then curiously, a dentillated cornice and a candle-snuffer roof, terminating in a ball and delicate metal cross. The presbytery has a octagonal chimney and convex shouldered windows and doors.

*Interior*: There is an exposed timber roof structure of rafters with scissor braces and arch braces. There is a rare complete set of stained glass windows: there is a fine east window

of the resurrection, the sanctuary windows to the memory of Thomas Cain and his wife, who died in 1913 and 1914, nave windows of saints in multi-lobed panels set in plain glass with Edwardian and even Art Nouveau decoration, and a cross *of fleur de lis* motif in the quatrefoil. Between these are stations of the cross, painted on board.

*Presbytery*: An eclectic two-storey Edwardian three-bay brick house, with a two-storey timber verandah on three sides, returning to projecting side wings towards the rear. A gabled frontispiece projects at the centre, with a finial. Windows are pairs on ground and triples on first floor with shallow segmental heads. The entrance is round headed and recessed, and with a label mould at first floor. Rectangular double-level bay windows project from the side wings. The upper gables jettison on brackets. Windows are quadruples, with highlights.

The roof is slate, with roughcast chimneys with a decorative brick band and four pots. The verandah has plain tall posts on short brick plinths at ground level and at first floor are decorative balustrades, each third baluster wider and pierced with a tulip motif Posts are Doric and triples at corners, neatly allowing a cross motif above the linked capitals. There are cast-iron lace brackets. The footpath is a pre-cast concrete diamond pattern.

## Intactness

Excellent, especially the church interior.

**SIGNIFICANT INTACT ELEMENTS:**

FORM. church FACADE. church VERANDAH. presbytery ROOF FORM. church USE.

ROOF DECORATION. VERANDAH DECORATION. presbytery

CHIMNEYS. presbytery DOORS. WINDOWS. PAINTWORK SCHEME.

STREET FURNITURE.

**Historical Australian Themes**

Community Life/ Townships.

**Physical Conditions**

**CONDITIONS & THREATS:** Good. There is vertical structural cracking in the church and staining of its brickwork.

**Usage/Former Usage**

USE: Church, residence & office.

*This place/object may be included in the Victorian Heritage Register pursuant to the Heritage Act 2017. Check the Victorian Heritage Database, selecting 'Heritage Victoria' as the place source.*

*For further details about Heritage Overlay places, contact the relevant local council or go to Planning Schemes Online <http://planningschemes.dpcd.vic.gov.au/>*