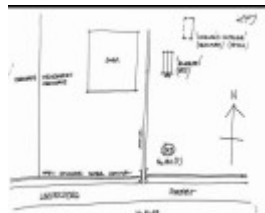


## "Riverton" Lot 2 TP328565 Lerderberg Street



Riverton



Menegazzo Orchards



original Hobbler Cottage



Later Hobbler Cottage



second part Hobbler Cottage



Hobbler Cottage

### Location

South of Masons Lane, North of Lerderberg Street BACCHUS MARSH, MOORABOOL SHIRE

### Municipality

MOORABOOL SHIRE

### Level of significance

Included in Heritage Overlay

### Heritage Overlay Numbers

HO95

### Heritage Listing

Moorabool Shire

### Statement of Significance

Last updated on - June 1, 1995

What is significant?

The Residence and its setting at Lot 2 TP328565 Lerderderg Street, Bacchus Marsh.

How is it significant?

The Residence and its setting at Lot 2 TP328565 Lerderderg Street, Bacchus Marsh is of local historical and architectural significance to the Shire of Moorabool.

Why is it significant?

The Residence and its setting at Lot 2 TP328565 Lerderderg Street, Bacchus Marsh is of local historical significance for its demonstration of the early development of the Bacchus Marsh Township. The dwelling is a rare surviving example of a cottage from the 1870s period. Survival of intact buildings from this era is rare across Victoria.

The Residence and its setting at Lot 2 TP328565 Lerderderg Street, Bacchus Marsh is of aesthetic significance as a rare surviving example of a mid-Victorian style cottage. The residence demonstrates key features of an early brick cottage including its simple form, small scale, main gable roof wing and skillion-roofed wing to the rear, brick chimneys and timber framed double hung windows with six pane sashes.

1995

A brick pre-gold rush early cottage, built between 1846 and 1848 on Captain W.H. Bacchus's Lardedark run and later occupied by George Hobler, grazier. Hobler's daughter married Bacchus's son, Henry, here in 1850. A second brick early cottage, Riverton, was built in 1873.

The 1846-8 cottage has state historical significance as an extraordinary embodiment of the way of life and its social values in the earliest years of settlement in Victoria, before the gold-rush. It is also significant for its association with the agricultural developments in the community at this time.

The cottage also demonstrates an association with important and influential people and as a pioneering building in the Colony and in Bacchus Marsh. It has state architectural significance as a rare intact surviving pre-gold rush building. The 1873 cottage affords local contributory significance.

Finally the 1846-48 cottage demonstrates that in 1853 the effect of government action in 1847 affirming the pastoralist's pre-emptive right to purchase land

Heritage Study/Consultant	Moorabool - Bacchus Marsh Heritage Study 1995, Richard Peterson and Daniel Catrice, 1995;
Other Names	Lardedark (Hobler's Cottage) & Riverton.,
Hermes Number	124287
Property Number	

---

## Physical Description 1

Small brick gable-roofed building, with external brick chimney facing. The older cottage is said to still exist but it is not visible from the road.

## Historical Australian Themes

Pastoralism/Governing

### **Intactness**

Needs closer inspection.

### **Physical Conditions**

**CONDITIONS & THREATS:** Needs closer inspection.

### **Integrity**

WALLS Brick

ROOF Iron

STRUCTURE Lb

### **Usage/Former Usage**

USE: 2 Cottages and orchard.

*This place/object may be included in the Victorian Heritage Register pursuant to the Heritage Act 2017. Check the Victorian Heritage Database, selecting 'Heritage Victoria' as the place source.*

*For further details about Heritage Overlay places, contact the relevant local council or go to Planning Schemes Online <http://planningschemes.dpcd.vic.gov.au/>*