

## Former Royal Australian Field Artillery Barracks



FORMER ROYAL  
AUSTRALIAN FIELD  
ARTILLERY BARRACKS  
SOHE 2008



FORMER ROYAL  
AUSTRALIAN FIELD  
ARTILLERY BARRACKS  
SOHE 2008



FORMER ROYAL  
AUSTRALIAN FIELD  
ARTILLERY BARRACKS  
SOHE 2008



FORMER ROYAL  
AUSTRALIAN FIELD  
ARTILLERY BARRACKS  
SOHE 2008



h01098 1 rafa barracks 2001



H01098 rafa barracks guard  
room 1995



H01098 rafa barracks gun  
shed 1995



H01098 rafa barracks horse  
hospital demolished 1995



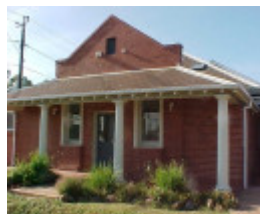
H01098 rafa barracks 1995



H01098 rafa barracks guard  
room 2001 pm1



H01098 rafa barracks  
gymnasium 2001 pm1



H01098 rafa barracks orderly  
room 2001 pm1



H01098 rafa barracks qstore infirmary 2001 pm1



H01098 rafa barracks gun shed 2001pm1



h01098 rafa barracks commandant s house 2002



h01098 rafa barracks single men s quarters 2002



h01098 rafa barracks captain s quarters outhouse 2002



h01098 rafa barracks captain s quarters 2002



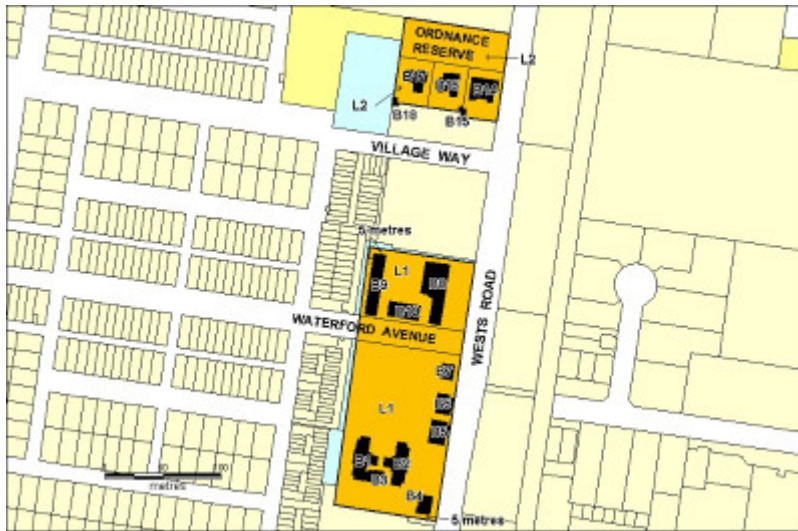
Rafa Barracks 1 Ordnance Reserve



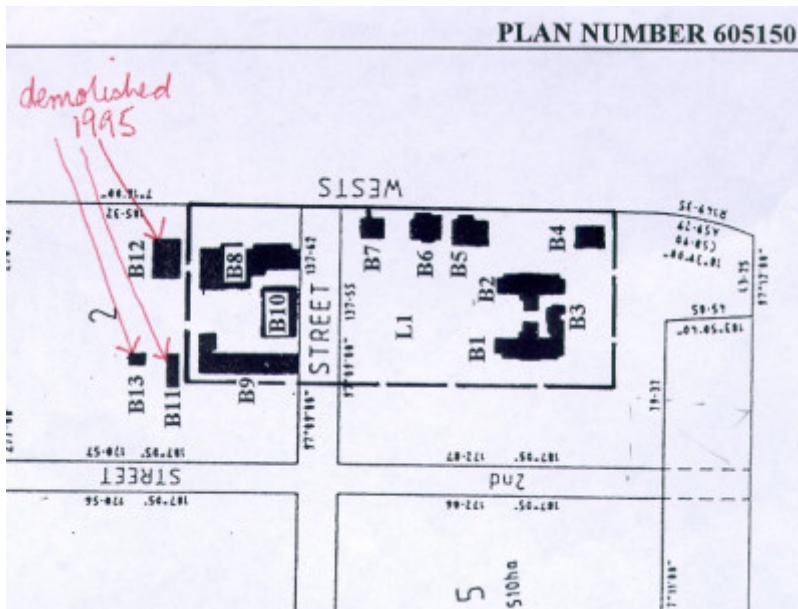
Rafa Barracks 2 Ordnance Reserve



Rafa Barracks 3 Ordnance Reserve



h01098 rafa barracks plan 2



Rafa Barracks Plan

---

## Location

PART OF FORMER ORDNANCE FACTORY, WESTS ROAD MARIBYRNONG and ORDNANCE RESERVE MARIBYRNONG and WATERFORD AVENUE MARIBYRNONG, Maribyrnong City

## Municipality

MARIBYRNONG CITY

## Level of significance

-

## Victorian Heritage Register (VHR) Number

H1098

## Heritage Overlay Numbers

HO72

## Heritage Listing

Vic. War Heritage Inventory

---

## Statement of Significance

Last updated on - May 5, 1999

What is significant?

The buildings that comprise the former Royal Australian Field Artillery (RAFA) Barracks of 1911 are red brick with either slate or corrugated iron roofs grouped around the former parade ground. The accommodation buildings are on the western side of the parade ground with the administration buildings to the east and the stables, gun shed and service buildings to the north. Further north are separate residences for the Commandant, Captain and Single Officers constructed in 1913. There is a consistent architecture throughout the RAFA Barracks which is an eclectic blend of elements of the Federation Free Classical and Arts and Crafts styles favoured by Commonwealth architect John Smith Murdoch (1862 -1945).

How is it significant?

The former RAFA Barracks is historically, architecturally and socially significant to the State of Victoria.

Why is it significant?

The former RAFA Barracks buildings form an important, architecturally cohesive complex of early Commonwealth military buildings associated with a field artillery battery. The layout of the complex with the accommodation buildings on the western side of the former parade ground, the administration buildings to the east and the stables, gun shed and service buildings to the north, and distinctly separate quarters for the commanding officers reflects its military function.

The former Royal Australian Field Artillery Barracks is historically significant as the only field artillery depot in Victoria remaining from the pre-World War One era and as a rare example of a site which demonstrates the relationship between soldiers, horses and guns. It is also historically important for its use as a First World War training depot.

The architectural design of the RAFA Barracks buildings is significant as the work of the distinguished Commonwealth architect John Smith Murdoch whose nationally important works include Provisional Parliament House and Yarralumla Canberra, HMAS Cerberus Crib Point, RAAF Point Cook and the former High Court, 450 Little Bourke Street, Melbourne. The three Arts and Crafts Bungalow style houses for the commanding officers were some of the earliest Commonwealth Government houses by Murdoch designed in a Garden Suburb manner. They were the earliest domestic designs by Murdoch in Victoria and were the forerunner to the Garden Suburb designs of many other houses by Murdoch in Australia.

The RAFA Barracks is of interest as a good example of a complex of buildings which have been adapted with minimal alteration from one significant use as a military barracks to another as administration and process buildings in a nationally important munitions factory.

Construction dates	1911,
Architect/Designer	Murdoch, John Smith,
Heritage Act Categories	Registered place,
Other Names	ORDNANCE FACTORY, RAFA BARRACKS,
Hermes Number	125253
Property Number	

---

## Physical Description 1

Date Started 1911; Date Finished ; Storeys 2; Desc BARRACKS; Walls BRICK; Roof SLATE

## Usage/Former Usage

1911 ; military ;

## Physical Conditions

State of the Historic Environment survey report - condition: fair. See Events.

## Veterans Description for Public

The Former Royal Australian Field Artillery Barracks, on Wests Road Maribyrnong, date from 1911. The site comprises of buildings that are red brick with either slate or corrugated iron roofs, grouped around the former parade ground. The accommodation buildings are on the western side of the parade ground with the administration buildings to the east and the stables, gun shed and service buildings to the north. There is a consistent architecture throughout the RAFA Barracks which is an eclectic bend of elements of the Federation Free Classical and Arts and Crafts styles favoured by Commonwealth architect John Smith Murdoch (1862 - 1945).

The former Royal Australian Field Artillery Barracks is historically significant as the only field artillery depot in Victoria remaining from the pre-First World War era and as a rare example of a site which demonstrates the relationship between soldiers, horses and guns. It is also historically important for its use as a First World War training depot.

## Extent of Registration

/n/n

1. All of the buildings known as the former Royal Australian Field Artillery Barracks being two Barracks Blocks (B1 and B2), Kitchen (B3), Quartermaster's Store (B4), Gymnasium (B5), Orderly Room (B6), Guard House (B7), two Stable Blocks (B8 and B9), Gun Shed (B10), Commandant's House (B14), Commandant's House and Captain's Quarters outbuildings (B15), Captain's Quarters (B16), Single Officer's Quarters (B17) and Single Officer's Quarters outbuilding (B18) marked on Diagram H1098 held by the Executive Director. (Note: The Forge and Farriery (B11), Saddler's and Wheeler's Workshop (B12) and the Pharmacy and Sick Boxes (B13) were demolished in 1995.)

/n

2. All of the land within a rectangle formed by the property boundary along Wests Road, a line perpendicular to Wests Road passing 5 metres to the north of the former stables building (B9), a line parallel to Wests Road passing 5 metres west of the former stables building (B9), and a line perpendicular to Wests Road passing 5 metres south of the former Quartermaster's Store (B4) marked L1 on Plan H1098 held by the Executive Director, being part of Lot 1 on Title Plan 3724C, part of Crown Allotment 9, Section 20, Parish of Cut Paw Paw more particularly described in Certificate of Title Volume 10054 Folio 847.

/n

3. All of the land marked L2 on Plan H1098 held by the Executive Director, being Lots 1-3 inclusive described in Plan of Subdivision PS431085K and part of the Ordnance Reserve.

*This place/object may be included in the Victorian Heritage Register pursuant to the Heritage Act 2017. Check the Victorian Heritage Database, selecting 'Heritage Victoria' as the place source.*

*For further details about Heritage Overlay places, contact the relevant local council or go to Planning Schemes Online <http://planningschemes.dpcd.vic.gov.au/>*