

---

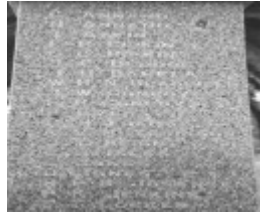
## Newstead War Memorial



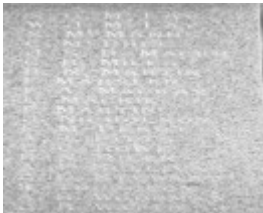
Newst 1.jpg



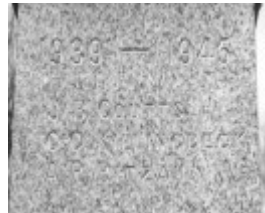
Newst 2.jpg



Newst 3.jpg



Newst 4.jpg



Newst 5.jpg

---

### Location

Creswick Newstead Road NEWSTEAD, Mount Alexander Shire

### Municipality

MOUNT ALEXANDER SHIRE

### Level of significance

-

### Heritage Listing

Vic. War Heritage Inventory

---

### Statement of Significance

Last updated on - October 3, 2003

The Newstead War and site memorial and Creswick Newstead Road, Newstead. is aesthetically significant at a LOCAL level. It forms an importance visual focus in the Open grasses park, amongst the mature palm trees and

deciduous trees that also contribute to the significance of the place.

The Newstead War Memorial, Creswick Newstead Road, Newstead, is historically significant at a LOCAL level. It is associated with the men and women who fought in the First and Second World Wars, having been unveiled in 1921.

The War Memorial, Creswick Newstead Road, Newstead, is scientifically significant at a LOCAL level. The granite construction of the pedestal, obelisk and stepped base is an example of fine craftsmanship in the early 20th century.

The War Memorial, Creswick Newstead Road, Newstead, is socially significant at a LOCAL level. It is recognised and highly valued by the Newstead community for cultural, social and commemorative reasons in relation to those men and women who fought in the First and Second World Wars.

Overall, the War Memorial and site, Creswick Newstead Road, Newstead, is of LOCAL significance.

Heritage Study/Consultant	Mount Alexander - Shire of Mount Alexander: Heritage Study of the former Shire of Newstead, Wendy Jacobs, Phil Taylor, Vicki Johnson, and Robyn Ballinger, 2003;
Other Names	Creswick Newstead Road, Newstead,
Hermes Number	125737
Property Number	

---

## Historical Australian Themes

Thematic Context

10. Community Life

## Physical Conditions

Good

## Integrity

Substantially Intact

## Physical Description 1

Newstead and District Soldiers' Memorial is in an area reserved for a public park on the Creswick Newstead Road, Newstead opposite the railway station. The almost triangular park reserve is on all sides with single or double rows of exotic deciduous trees.

The monument, erected by Wilson and Co, of Bendigo, is carved from Harcourt granite and is in good condition. It comprises an obelisk and base (2.5m) resting on a pedestal and stepped base of three courses, the whole measuring 4.7 m in height, within an enclosure, 3.5 m square, bounded by six granite posts connected by two

layers of steel pipe and cyclone wire. There is a framed cyclone wire gate on one side of this enclosing fence. The dedicatory inscription on the memorial faces the railway station, and the three remaining panels are inscribed with the names of 41 men from the pre-1915 Shire of Newstead who died in the First World War and three who died in the second.

Directly adjacent to the monument there is a flagpole, which has a rough-faced base of Harcourt granite. The flagpole and its base are located within a small square enclosure bounded by four granite posts, linked with two rows of steel pipe.

A rectangular border around the grouping of the memorial and flagpole is marked by blocks of granite set into the ground, from which they sit slightly proud. This grouping is further surrounded by five palm trees. The placement of the existing trees and two depressions in the ground at particular intervals within the circle suggests that there were originally seven trees.

## **Veterans Description for Public**

The Newstead War Memorial, located on Creswick Newstead Road, commemorates the First World War and the Second World War. It was generally agreed in the winter of 1919 that Newstead's 180 volunteers in the First World War should be commemorated by an Avenue of Honour followed by the erection of an obelisk, in the reserve opposite the railway station, which was then a vacant allotment. When the Avenue of Honour proposal grew controversial, due to the favoured site on the Strangways Road being on the Loddon River's flood plain, several Shire Councillors preferred an obelisk because, as Cr Gibson said; 'the obelisk would remain a lasting memorial, whereas the trees would die out.'

On October 17th 1919, a month after the opening of the avenue on the Joyce's Creek Road, a public meeting, in the Mechanics' Institute decided unanimously to erect a memorial 'in honour of the fallen soldiers of the old Newstead Shire.' Evidently there were delays because two years elapsed before the monument was completed at a cost of £400. At the same time three local men, J. Cusack, J.T. Height and D. Smith, built a 'substantial fence' around the reserve using materials supplied by T. Odgers and Co., of Castlemaine. The memorial committee's intention was to have the enclosed area planted with shrubs to form a small park or garden.

The monument was unveiled on November 12th 1921 by Brigadier General Sir Thomas Glasgow (1876-1955), a Queensland Senator (1919-32), who had commanded the 1st Division, AIF, in France in 1918 and was Commonwealth Minister for Defence between 1927 and 1929. Other members of the official party were Captain Morley, MLA, D. McLeod, MLA, Shire President Cr B. Blinkhorn, the memorial committee of nine members, including the chairman, Cr Alex Clarke, shire councillors and other prominent residents. Sir Glasgow requested all present to bow their heads while he performed the unveiling, the silence broken only by buglers of the Newstead State School who played 'The Last Post'.

After the Second World War, the names of those who served were engraved onto the back of the monument along with the dates 1939-1945.

*This place/object may be included in the Victorian Heritage Register pursuant to the Heritage Act 2017. Check the Victorian Heritage Database, selecting 'Heritage Victoria' as the place source.*

*For further details about Heritage Overlay places, contact the relevant local council or go to Planning Schemes Online <http://planningschemes.dpcd.vic.gov.au/>*