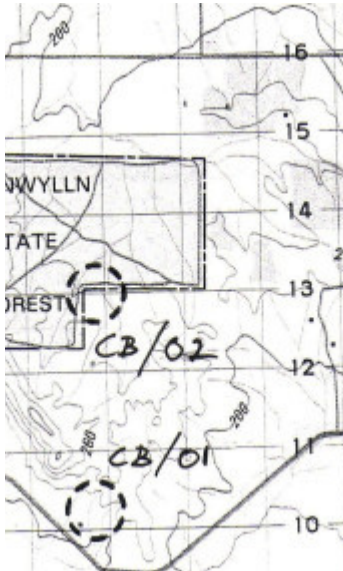


---

# Glynwyllyn Internment Camp



CB 02 - Shire of Northern  
Grampians - Stage 2 Heritage  
Study, 2004

---

## Location

Glynwyllyn State Forest CAMPBELLS BRIDGE, NORTHERN GRAMPIANS SHIRE

## Municipality

NORTHERN GRAMPIANS SHIRE

## Level of significance

-

## Heritage Listing

Vic. War Heritage Inventory

---

## Statement of Significance

Last updated on - July 16, 2004

This was one of about 20 such camps established across the State during World War Two, used to house "enemy aliens". The men were engaged principally in cutting firewood for Melbourne. The camp consisted of rows of tents and a rough mess hut and kitchen. Bricks from the chimney, pits, rubbish dumps and artefacts remain. The site is of importance for its potential to provide information that contributes to a greater understanding of the history of the set out of alien camps and has a strong presumption of archaeological research potential. Further historical research and archaeological investigation is recommended.

RECOMMENDED LEVEL OF SIGNIFICANCE: Conservation Desirable

Heritage Study/Consultant	Northern Grampians - Shire of Northern Grampians - Stage 2 Heritage Study, Wendy Jacobs, Vicki Johnson, David Rowe, Phil Taylor, 2004;
Construction dates	1942,
Other Names	Campbells Bridge Alien Camp,
Hermes Number	127068
Property Number	

---

### **Veterans Description for Public**

Glynwyllyn Camp was one of about twenty such camps established across Victoria during the Second World War, used to house Italian internees. The men were engaged principally in cutting firewood from Glynwyllyn State Forest for Melbourne. The camp consisted of rows of tents and a rough mess hut and kitchen. Bricks from the chimney, pits, rubbish dumps and artefacts remain.

*This place/object may be included in the Victorian Heritage Register pursuant to the Heritage Act 2017. Check the Victorian Heritage Database, selecting 'Heritage Victoria' as the place source.*

*For further details about Heritage Overlay places, contact the relevant local council or go to Planning Schemes Online <http://planningschemes.dpcd.vic.gov.au/>*