

# ALL NATIONS MINE SITE



Relocation of the sectional steam cyl. from the All Nations gold mine to the Woods Point museum.



Relocation of the sectional steam cyl. from the All Nations gold mine to the Woods Point museum.



Relocation of the sectional steam cyl. from the All Nations gold mine to the Woods Point museum.



Relocation of the sectional steam cyl. from the All Nations gold mine to the Woods Point museum.



Relocation of the sectional steam cyl. from the All Nations gold mine to the Woods Point museum.



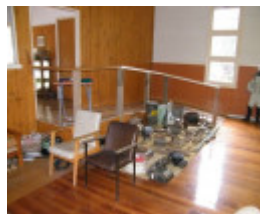
relocation of the sectional steam cyl. from the All Nations gold mine to the Woods Point museum.



relocation of the sectional steam cyl. from the All Nations gold mine to the Woods Point museum.



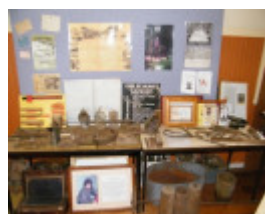
relocation of the sectional steam cyl. from the All Nations gold mine to the Woods Point museum.



relocation of the sectional steam cyl. from the All Nations gold mine to the Woods Point museum.



relocation of the sectional steam cyl. from the All Nations gold mine to the Woods Point museum.



relocation of the sectional steam cyl. from the All Nations gold mine to the Woods Point museum.



relocation of the sectional steam cyl. from the All Nations gold mine to the Woods Point museum.

---

**Location**

MATLOCK, MANSFIELD SHIRE, MANSFIELD SHIRE

**Municipality**

MANSFIELD SHIRE

**Level of significance**

Heritage Inventory Site

**Heritage Inventory (HI) Number**

H8122-0100

**Heritage Listing**

Victorian Heritage Inventory

---

Hermes Number 12954

Property Number

---

*This place/object may be included in the Victorian Heritage Register pursuant to the Heritage Act 2017. Check the Victorian Heritage Database, selecting 'Heritage Victoria' as the place source.*

*For further details about Heritage Overlay places, contact the relevant local council or go to Planning Schemes Online <http://planningschemes.dpcd.vic.gov.au/>*