

# STONY CREEK BALLAST LOADING WHARF - YARRA RIVER



Stony Creek Wharf Yarra River Maribyrnong April 2003 001



Stony Creek Wharf Yarra River Maribyrnong April 2003 002



Stony Creek Wharf Yarra River Maribyrnong April 2003 003



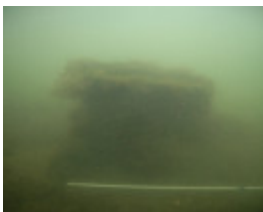
Stony Creek Wharf Yarra River Maribyrnong April 2003 004



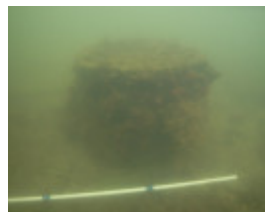
Stony Creek Wharf Yarra River Maribyrnong April 2003 005



Channel Deepening Project



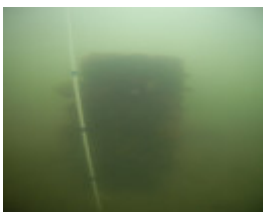
Channel Deepening Project



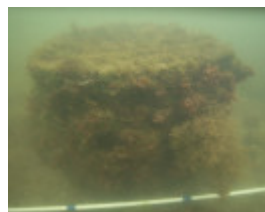
Channel Deepening Project



Channel Deepening Project



Channel Deepening Project



Channel Deepening Project



Channel Deepening Project



Channel Deepening Project



Channel Deepening Project



Channel Deepening Project



Channel Deepening Project



Channel Deepening Project



Channel Deepening Project



Channel Deepening Project



Channel Deepening Project



Channel Deepening Project



Channel Deepening Project



Channel Deepening Project



Channel Deepening Project



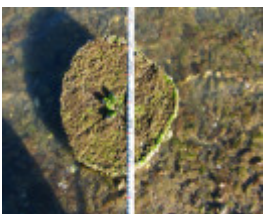
Channel Deepening Project



Channel Deepening Project



Channel Deepening Project



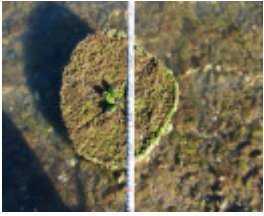
Channel Deepening Project



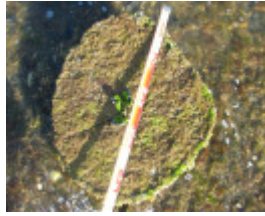
Channel Deepening Project



Channel Deepening Project



Channel Deepening Project



Channel Deepening Project



Channel Deepening Project



Channel Deepening Project



Channel Deepening Project



Channel Deepening Project



Channel Deepening Project



Channel Deepening Project



Channel Deepening Project



Channel Deepening Project



Channel Deepening Project



Channel Deepening Project



Channel Deepening Project



Channel Deepening Project



Channel Deepening Project



Channel Deepening Project



Channel Deepening Project



Channel Deepening Project





Channel Deepening Project



Channel Deepening Project



Channel Deepening Project



Channel Deepening Project



Channel Deepening Project



Channel Deepening Project



Channel Deepening Project



Channel Deepening Project



Channel Deepening Project



Channel Deepening Project



Channel Deepening Project



Channel Deepening Project



Channel Deepening Project



Channel Deepening Project



Channel Deepening Project



Channel Deepening Project



Channel Deepening Project



Channel Deepening Project



Channel Deepening Project



Channel Deepening Project



Channel Deepening Project



Channel Deepening Project



Channel Deepening Project



Channel Deepening Project



Channel Deepening Project



Channel Deepening Project



Channel Deepening Project



Channel Deepening Project



Channel Deepening Project



Channel Deepening Project



Channel Deepening Project



Channel Deepening Project



Channel Deepening Project



Channel Deepening Project



Channel Deepening Project



Channel Deepening Project





Channel Deepening Project



Channel Deepening Project



Channel Deepening Project



Channel Deepening Project



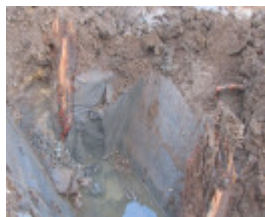
Channel Deepening Project



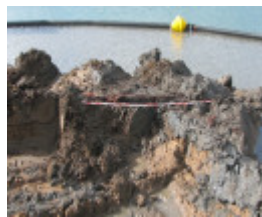
Channel Deepening Project



Channel Deepening Project



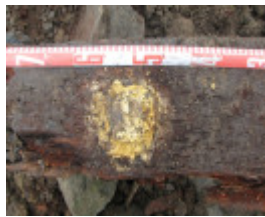
Channel Deepening Project



Channel Deepening Project



Channel Deepening Project



Channel Deepening Project



Channel Deepening Project



Channel Deepening Project



Channel Deepening Project



Channel Deepening Project



Channel Deepening Project



Channel Deepening Project



Channel Deepening Project



Channel Deepening Project



Channel Deepening Project



Channel Deepening Project



Channel Deepening Project



Channel Deepening Project



Channel Deepening Project



Channel Deepening Project



Channel Deepening Project



Channel Deepening Project

---

## Location

HYDE STREET SPOTSWOOD, HOBSONS BAY CITY

## Municipality

HOBSONS BAY CITY

## Level of significance

Heritage Inventory Site

## Heritage Inventory (HI) Number

H7822-0423

## Heritage Listing

Victorian Heritage Inventory

---

Interpretation of Site Somerville (pers comms) has indicated that these remains are part of former ballast lighter wharves that once serviced the Stony Creek bluestone quarries. It is probable that part of the former wharves are buried under stone beaching/ seawall that now covers large sections of the Yarra River foreshore. This is one of the few remaining visible examples of ballast wharves in the Melbourne area. Part of the former ballast trade industry and landscape of Melbourne. Nominated for inclusion on the Victorian Heritage Register as Part of the Stony Creek Heritage Precinct for its significance as one of the only remaining archaeological examples of the development of a port area.

Hermes Number 13775

Property Number

---

## History

The wharf is shown in a 1925 photo of the area. This area has a long association with the provision of ballast to vessels visiting Hobsons Bay. Numerous wharves pertaining to ballast loading were known to exist in this area. In 1898, John Parry was granted a licence to establish a ballast jetty 50ft north of the Bottle Works Jetty.

*This place/object may be included in the Victorian Heritage Register pursuant to the Heritage Act 2017. Check the Victorian Heritage Database, selecting 'Heritage Victoria' as the place source.*

*For further details about Heritage Overlay places, contact the relevant local council or go to Planning Schemes Online <http://planningschemes.dpcd.vic.gov.au/>*