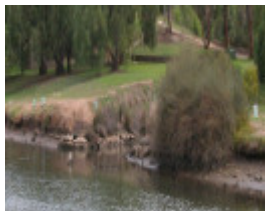

RIVERVIEW TEAGARDENS WHARF AND SLIPWAY



Riverview Teagardens Wharf
And Slipway Maribyrnong
May 2003 001



Riverview Teagardens Wharf
And Slipway Maribyrnong
May 2003 002



Riverview Teagardens Wharf
And Slipway Maribyrnong
May 2003 003



Riverview Teagardens Wharf
And Slipway Maribyrnong
May 2003 004

Location

TEA GARDENS DRIVE AVONDALE HEIGHTS, MOONEE VALLEY CITY

Municipality

MOONEE VALLEY CITY

Level of significance

Heritage Inventory Site

Heritage Inventory (HI) Number

H7822-0514

Heritage Listing

Victorian Heritage Inventory

Interpretation of Site	There is a high probability of stratified archaeological deposits on the riverbed given the long use of the site. The site is the only surviving example of a teagardens wharf in this area, and is one of only two extant slipways in the river. The tea gardens are of social significance as a former popular recreational facility.
Hermes Number	13804
Property Number	

History

The Riverview Gardens were established in 1909 by the Daniel Hicks, and were a popular local picnic site accessible by rivercraft. The Hicks family operated a fleet of pleasure craft on the Maribyrnong River between the gardens and the Maribyrnong Bridge at Raleigh Road, and one vessel (The River Queen) could carry over 200 people. The gardens were designed by John Oliver, curator of Queens Park in Moonee Ponds, and included tennis courts, pavilions, a kiosk, open air theatre and dance hall. The Hicks family also built a large vessel at this site (Somerville, pers comms). Trade flourished at the site until the 1930's, when the family opened an office to service the Yarra River. Trade at the gardens declined during WWII, when a boomgate was installed downstream on the river to protect the explosives industries, and further declined until 1947, when the venture was discontinued. The land was subsequently used as a bluestone quarry, and a fire later destroyed the gardens former buildings.

This place/object may be included in the Victorian Heritage Register pursuant to the Heritage Act 2017. Check the Victorian Heritage Database, selecting 'Heritage Victoria' as the place source.

For further details about Heritage Overlay places, contact the relevant local council or go to Planning Schemes Online <http://planningschemes.dpcd.vic.gov.au/>