

# FORMER CONGREGATIONAL CHURCH AND HALL



FORMER  
CONGREGATIONAL  
CHURCH AND HALL SOHE  
2008



FORMER  
CONGREGATIONAL  
CHURCH AND HALL SOHE  
2008



FORMER  
CONGREGATIONAL  
CHURCH AND HALL SOHE  
2008



FORMER  
CONGREGATIONAL  
CHURCH AND HALL SOHE  
2008



FORMER  
CONGREGATIONAL  
CHURCH AND HALL SOHE  
2008



FORMER  
CONGREGATIONAL  
CHURCH AND HALL SOHE  
2008



1 former congregational  
church ballarat front view  
aug1985



former congregational church  
and hall mair and dawson sts  
north ballarat close up  
steeple she project 2004



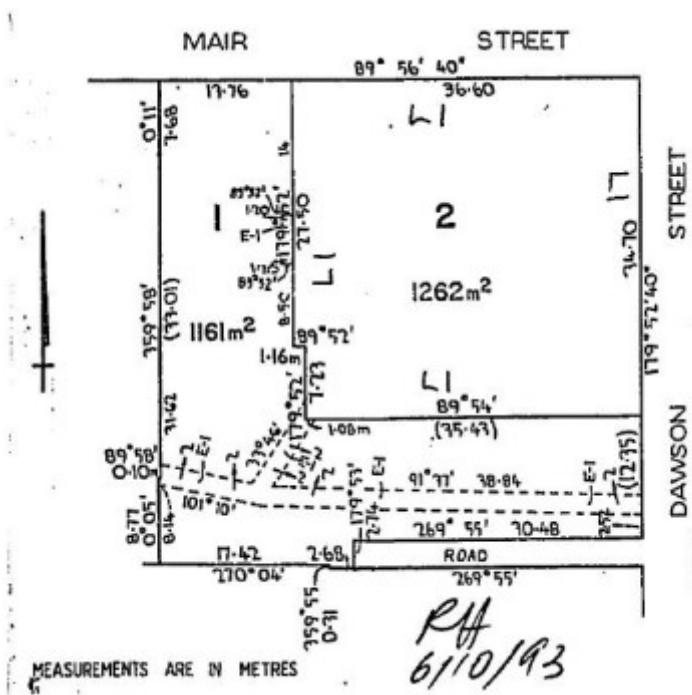
former congregational church  
and hall mair and dawson sts  
north ballarat exterior she  
project 2004



former congregational church  
and hall mair and dawson sts  
north ballarat steeple she  
project 2004



former congregational church  
and hall mair and dawson sts  
north ballarat windows she  
project 2004



h00995 plan h0995

## Location

503 MAIR STREET BALLARAT CENTRAL, BALLARAT CITY

## Municipality

BALLARAT CITY

## Level of significance

Registered

## Victorian Heritage Register (VHR) Number

H0995

## Heritage Overlay Numbers

HO31

## VHR Registration

December 1, 1994

## Heritage Listing

Victorian Heritage Register

---

## Statement of Significance

Last updated on - June 19, 2000

The former Congregational Church, Ballarat was constructed in 1881-82 to the design of architects CD Figgis and HR Caselli. The chancel and vestry were added in 1906 to the design of Molloy and Chandler. The Church hall was built in 1862. Designed as a school by architect JA Doane, it served the Congregational community as a chapel until the present church was officially opened in 1882. The Ballarat Congregational Church, now part of the Uniting Church of Australia, was sold to the Ballarat Christian Fellowship in 1981.

The design, massing and detail of the former Congregational Church demonstrate creative accomplishment in the history of architecture in Victoria and the church represents an extraordinary example of eclectic Gothic architecture. In particular, the foliated capitals of the internal and external columns, anticipating the art nouveau movement, are of major importance.

The Church demonstrates outstanding craftsmanship in building construction and decoration through its elaborate and finely detailed corner tower, its richly decorated wheel window above an arcaded portico and its four free standing columns with superb Corinthian-esque capitals approaching art nouveau character supporting reduced hammer beam trusses and a boarded ceiling.

The Church is of architectural significance for its association with the prominent Ballarat architects HR Caselli and CD Figgis. Amongst other works of Caselli are the Ballarat East Fire Station and the interior of the Ballarat Town Hall. Other works of Figgis include the Ballarat Mining Exchange and the Geelong Club.

The complex has a strong association with the Congregational denomination, first established in England during the seventeenth century with the Puritan movement of dissent from the Church of England. The complex is significant as the centre of the Congregational community in Ballarat since 1862 when the hall (then the school/chapel) was opened for worship. The creative and eclectic style of the Church demonstrates the Congregationalist's belief in the autonomy of each congregation.

## Permit Exemptions

### General Exemptions:

General exemptions apply to all places and objects included in the Victorian Heritage Register (VHR). General exemptions have been designed to allow everyday activities, maintenance and changes to your property, which don't harm its cultural heritage significance, to proceed without the need to obtain approvals under the Heritage Act 2017.

Places of worship: In some circumstances, you can alter a place of worship to accommodate religious practices without a permit, but you must [notify](#) the Executive Director of Heritage Victoria before you start the works or activities at least 20 business days before the works or activities are to commence.

Subdivision/consolidation: Permit exemptions exist for some subdivisions and consolidations. If the subdivision or consolidation is in accordance with a planning permit granted under Part 4 of the *Planning and Environment Act 1987* and the application for the planning permit was referred to the Executive Director of Heritage Victoria as a determining referral authority, a permit is not required.

Specific exemptions may also apply to your registered place or object. If applicable, these are listed below. Specific exemptions are tailored to the conservation and management needs of an individual registered place or object and set out works and activities that are exempt from the requirements of a permit. Specific exemptions prevail if they conflict with general exemptions.

Find out more about heritage permit exemptions [here](#).

Construction dates 1881,  
Architect/Designer Caselli & Figgis,  
Heritage Act Categories Registered place,  
Hermes Number 1383  
Property Number

---

## History

Associated People:

## Extent of Registration

### AMENDMENT OF REGISTER OF HISTORIC BUILDINGS

Historic Building No. 995-

Ballarat Christian Fellowship Church and Hall, former Congregational Church and Hall, corner Mair and Dawson Streets, Ballarat.

(To the extent of:

1. All the building known as the Ballarat Christian Fellowship Church (former Congregational Church) and all of the building known as the Church Hall.
2. All the land contained in Lot 2 on Plan of Subdivision No. 143927 described in Certificate of Title Volume 9575 Folio 757 and marked L-1 on Plan 600210(A), endorsed by the Chairperson, Historic Buildings Council and held by the Director, Historic Buildings Council.)

[*Victoria Government Gazette* No. G48 1 December 1994 p.3196]

*This place/object may be included in the Victorian Heritage Register pursuant to the Heritage Act 2017. Check the Victorian Heritage Database, selecting 'Heritage Victoria' as the place source.*

*For further details about Heritage Overlay places, contact the relevant local council or go to Planning Schemes Online <http://planningschemes.dpcd.vic.gov.au/>*