

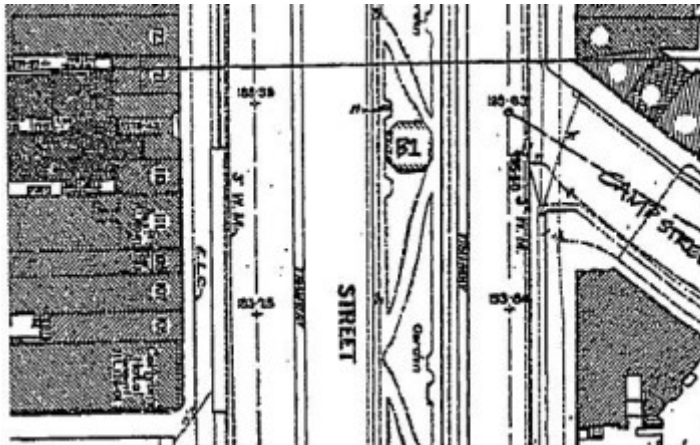
# TITANIC MEMORIAL BANDSTAND



TITANIC MEMORIAL  
BANDSTAND SOHE 2008



1 titanic memorial bandstand  
ballarat front view 1993



h00971 plan h0971

## Location

STURT STREET BALLARAT CENTRAL, BALLARAT CITY

## Municipality

BALLARAT CITY

## Level of significance

Registered

## Victorian Heritage Register (VHR) Number

H0971

## Heritage Overlay Numbers

## VHR Registration

July 8, 1993

## Heritage Listing

Victorian Heritage Register

---

## Statement of Significance

Last updated on - January 5, 1998

The SS Titanic Memorial Bandstand is an excellent and unusual example of creative bandstand design of the Edwardian period. a picturesque composition with dominant roofs of oriental character, it is an exotic and important element of the streetscape of Sturt Street.

Constructed in 1915, it is one of the few remaining examples of what was once a building type found commonly in the parks and gardens of many municipalities. It serves as a tangible reminder of a highly popular form of entertainment, prominent on the community agenda for many years. The construction of the bandstand and its survival until now also reflects the place of music in Ballarat's cultural identity and the continuing prominence of music in the community.

It is a memorial to the sinking of the SS Titanic a disaster still recalled today, and to her heroic musicians who played as they went down with their ship.

The bandstand and its construction is indicative of Ballarat's self image and patriotic fervour.

## Permit Exemptions

### General Exemptions:

General exemptions apply to all places and objects included in the Victorian Heritage Register (VHR). General exemptions have been designed to allow everyday activities, maintenance and changes to your property, which don't harm its cultural heritage significance, to proceed without the need to obtain approvals under the Heritage Act 2017.

Places of worship: In some circumstances, you can alter a place of worship to accommodate religious practices without a permit, but you must **notify** the Executive Director of Heritage Victoria before you start the works or activities at least 20 business days before the works or activities are to commence.

Subdivision/consolidation: Permit exemptions exist for some subdivisions and consolidations. If the subdivision or consolidation is in accordance with a planning permit granted under Part 4 of the *Planning and Environment Act 1987* and the application for the planning permit was referred to the Executive Director of Heritage Victoria as a determining referral authority, a permit is not required.

Specific exemptions may also apply to your registered place or object. If applicable, these are listed below. Specific exemptions are tailored to the conservation and management needs of an individual registered place or object and set out works and activities that are exempt from the requirements of a permit. Specific exemptions prevail if they conflict with general exemptions.

Find out more about heritage permit exemptions [here](#).

Construction dates 1915,  
Heritage Act Categories Registered place,  
Hermes Number 1392  
Property Number

---

## History

Associated People: Assoc.People SS TITANIC

## Plaque Citation

Titanic Memorial Bandstand is registered by Heritage Council Victoria

This Edwardian memorial is a reminder of the valiant musicians lost in the SS Titanic disaster.

## Extent of Registration

AMENDMENT OF REGISTER OF HISTORIC BUILDINGS

Historic Building No. 971.

SS Titanic Memorial Bandstand, Sturt Street, Ballarat.

(To the extent of:

1. The whole of the building known as SS Titanic Memorial Bandstand (B1), including the stone base and retaining wall, shown on Plan No. 6002195 (A) signed by the Chairperson, Historic Buildings Council and held by the Director, Historic Buildings Council.)

[*Victoria Government Gazette* No. G26 8 July 1993 p.1838]

---

*This place/object may be included in the Victorian Heritage Register pursuant to the Heritage Act 2017. Check the Victorian Heritage Database, selecting 'Heritage Victoria' as the place source.*

*For further details about Heritage Overlay places, contact the relevant local council or go to Planning Schemes Online <http://planningschemes.dpcd.vic.gov.au/>*