

GROSVENOR STREET TANNERY SITE



GROSVENOR STREET
TANNERY SITE



GROSVENOR STREET
TANNERY SITE



GROSVENOR STREET
TANNERY SITE



GROSVENOR STREET
TANNERY SITE



GROSVENOR STREET
TANNERY SITE



GROSVENOR STREET
TANNERY SITE



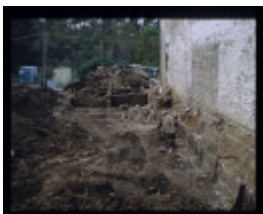
GROSVENOR STREET
TANNERY SITE



GROSVENOR STREET
TANNERY SITE



GROSVENOR STREET
TANNERY SITE



GROSVENOR STREET
TANNERY SITE



GROSVENOR STREET
TANNERY SITE



GROSVENOR STREET
TANNERY SITE

Location

28-36 GROSVENOR STREET ABBOTSFORD, YARRA CITY

Municipality

YARRA CITY

Level of significance

Heritage Inventory Site

Heritage Inventory (HI) Number

H7922-0475

Heritage Overlay Numbers

HO12

Heritage Listing

Victorian Heritage Inventory

Statement of Significance

Last updated on -

A number of leather manufacturers (shoes/boot factories) and tanneries are known to have been operating in Abbotsford and Collingwood in the late 19th century and early 20th century. The site has a low level of historical significance associated with the early industry of Abbotsford. The tannery would have supported a number of boot manufacturers operating in the area from the 1880s onwards until the industry's decline in the 1930s.

Interpretation of Site	Site is likely to consist of remains of a tannery, dating to C.1880. 4 of approx 28 tanning pits remain.
Historical Significance	The site has historical significance for its associations as part of the early industry of Abbotsford. The tannery would have supported a number of boot manufacturers operating in the area from the 1880s until the industry's decline in the 1930s.
Hermes Number	149540
Property Number	

History

Site was formerly part of the Phoenix Biscuit complex. Tanneries were operational in Abbotsford area from 1860s onwards. Tanning pits on site are likely to date to 1880s.

This place/object may be included in the Victorian Heritage Register pursuant to the Heritage Act 2017. Check the Victorian Heritage Database, selecting 'Heritage Victoria' as the place source.

For further details about Heritage Overlay places, contact the relevant local council or go to Planning Schemes Online <http://planningschemes.dpcd.vic.gov.au/>