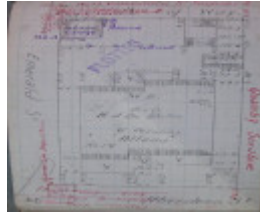

Residence



18 Aberdeen Street, Geelong West



Source: Aitken, Honman & Huddle, 'City of Geelong West Urban Conservation Study', 1986. - Street View



GWST Field-book, no. 123, p22, c.1913

Location

18 Aberdeen Street, GEELONG WEST VIC 3218 - Property No 200137

Municipality

GREATER GEELONG CITY

Level of significance

Incl in HO area indiv sig

Heritage Overlay Numbers

HO602

HO1959

Heritage Listing

Greater Geelong City

Statement of Significance

Last updated on -

LOCAL SIGNIFICANCE - INCLUDED IN HERITAGE PRECINCT

STATEMENT OF SIGNIFICANCE

14-18 Aberdeen Street are an intact group of Edwardian houses which were originally identical. They have interesting profiles and fine window joinery and fretwork. They are of Local significance.

REFERENCES:

Borough of Geelong West Rate Books, 1903-04, 1912-13, 1916-17.

Heritage Study/Consultant	Greater Geelong - City of Geelong West Urban Conservation Study, Huddle, Aitken and Honman, 1986; Greater Geelong - Ashby Heritage Review, D Rowe and W Jacobs, 2010;
Heritage Act Categories	Registered place,
Hermes Number	15290
Property Number	

Physical Description 1

The single storey buildings are clad in weatherboards and have hipped and gabled roofs clad in corrugated iron. The interesting profile on the tall red brick chimneys has been created by the use of stringcourse and corbelling. Other decorative elements include the strapwork on the gable ends and the fine timber fretwork of the verandah valance and columns. The elegance of the fretwork is complimented by the fine joinery of the tall, narrow windows. Similar fretwork chimneys, projecting bay, porch and roof form may be found on residences at 9 and 17 Lawton Avenue.

This place/object may be included in the Victorian Heritage Register pursuant to the Heritage Act 2017. Check the Victorian Heritage Database, selecting 'Heritage Victoria' as the place source.

For further details about Heritage Overlay places, contact the relevant local council or go to Planning Schemes Online <http://planningschemes.dpcd.vic.gov.au/>