

## FORMER CONGREGATIONAL CHURCH



FORMER  
CONGREGATIONAL  
CHURCH SOHE 2008



FORMER  
CONGREGATIONAL  
CHURCH SOHE 2008



FORMER  
CONGREGATIONAL  
CHURCH SOHE 2008



1 former congregational  
church brighton front view



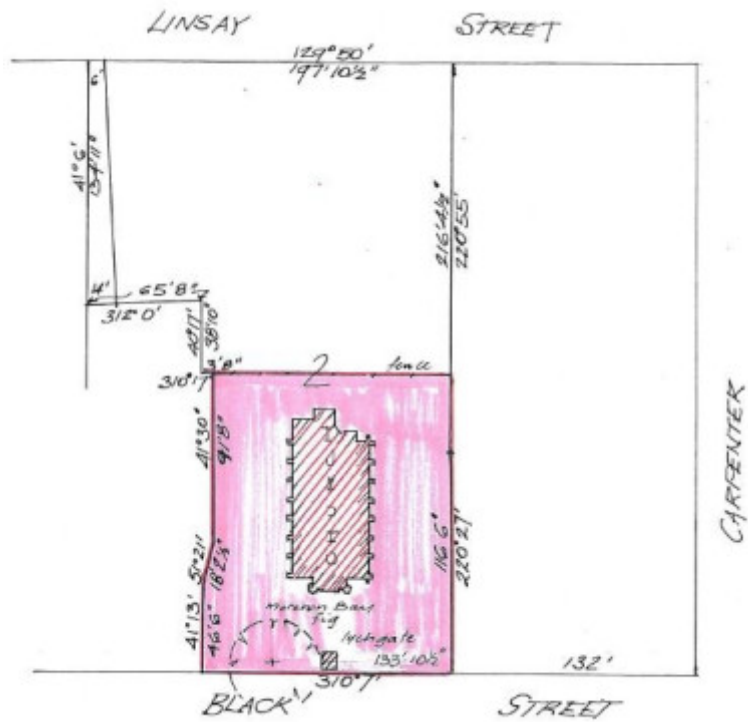
former congregational church  
brighton detail of front  
entrance



former congregational church  
brighton interior fron view



former congregational church  
brighton rear of church  
nov1984



H0724 H0724 plan

## Location

17 BLACK STREET BRIGHTON, BAYSIDE CITY

## Municipality

BAYSIDE CITY

## Level of significance

Registered

## Victorian Heritage Register (VHR) Number

H0724

## Heritage Overlay Numbers

H075

## VHR Registration

February 22, 1989

## Heritage Listing

## Statement of Significance

Last updated on - June 28, 1999

The Former Congregational Church, Black Street, Brighton was constructed in 1875 to the design of architect Charles Webb. The church was constructed by builder James Bonham on the site of a previous timber church.

The building is tuckpointed using black and cream bricks with a minimum of reds.

The exterior is intact except for the vestry addition at the rear.

The interior of the buildings contains a sloping timber floor, timber screens and pews and a central pulpit. The ceiling is exposed varnished pine lining supported by king post trusses. The walls are painted render with a stencilled dado border and paint finished mouldings to windows and door openings.

The church contains an intact Fincham organ.

The building is a substantially intact structure with finely executed detailing and is one of a small number of intact, extant Webb churches in Melbourne. The entry is marked by a memorial lych-gate constructed in 1954 and a large Moreton Bay fig tree thought to have been grown from seedlings supplied by the horticulturalist Dr Ferdinand von Mueller.

[Source: Report to the Minister]

## Permit Exemptions

### General Exemptions:

General exemptions apply to all places and objects included in the Victorian Heritage Register (VHR). General exemptions have been designed to allow everyday activities, maintenance and changes to your property, which don't harm its cultural heritage significance, to proceed without the need to obtain approvals under the Heritage Act 2017.

**Places of worship:** In some circumstances, you can alter a place of worship to accommodate religious practices without a permit, but you must **notify** the Executive Director of Heritage Victoria before you start the works or activities at least 20 business days before the works or activities are to commence.

**Subdivision/consolidation:** Permit exemptions exist for some subdivisions and consolidations. If the subdivision or consolidation is in accordance with a planning permit granted under Part 4 of the *Planning and Environment Act 1987* and the application for the planning permit was referred to the Executive Director of Heritage Victoria as a determining referral authority, a permit is not required.

Specific exemptions may also apply to your registered place or object. If applicable, these are listed below. Specific exemptions are tailored to the conservation and management needs of an individual registered place or object and set out works and activities that are exempt from the requirements of a permit. Specific exemptions prevail if they conflict with general exemptions.

Find out more about heritage permit exemptions [here](#).

Construction dates 1875,  
Architect/Designer Webb, Charles,  
Heritage Act Categories Registered place,  
Hermes Number 158  
Property Number

---

## **Extent of Registration**

### AMENDMENT OF REGISTER OF HISTORIC BUILDINGS

Historic Building No. 724:

Former Congregational Church, 17 Black Street, Brighton -

to the extent of all buildings shown hatched and that part of the land outlined in red on the plan (Appendix B) held by the Ministry for Planning and Environment, being part of Certificate of Title Volume 7540 Folio 028.

[*Victoria Government Gazette* G8 22 February April 1989 p.423]

*This place/object may be included in the Victorian Heritage Register pursuant to the Heritage Act 2017. Check the Victorian Heritage Database, selecting 'Heritage Victoria' as the place source.*

*For further details about Heritage Overlay places, contact the relevant local council or go to Planning Schemes Online <http://planningschemes.dpcd.vic.gov.au/>*