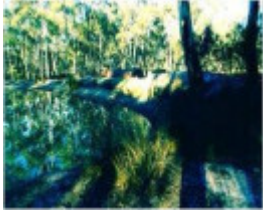


---

# Hartland's Loeser Road Eucalyptus Distillery



Hartland's Loeser Road  
Eucalyptus Distillery

---

## Location

CA 4 Eaglehawk-Neilborough Road, WOODVALE VIC 3556 - Property No 198895

## Municipality

GREATER BENDIGO CITY

## Level of significance

Included in Heritage Overlay

## Heritage Overlay Numbers

HO480

## Heritage Listing

Greater Bendigo City

---

## Statement of Significance

Last updated on -

The site is representative of those found in eucalyptus distilling which was an important rural industry (criterion A and criterion D) and has potential for education and interpretation as part of the Loeser Picnic Area.(criterion C).

Heritage Study/Consultant	Greater Bendigo - Marong Heritage Study 1999, Andrew Ward and Associates, 1999;
Construction dates	1930,
Hermes Number	164198
Property Number	

---

## Physical Description 1

Two circular brick-lined vats, 7 feet in diameter, and concrete lids. Near the vats is a wooden crane base and several sections of condensing pipe in the fragmented concrete condensing pit. North of the condensing pit there is a single pass Cornish boiler, 24 feet long and 6½ feet in diameter, which retains some of its steam valves. North of this setting is an earthen dam. The surrounding land has been made into a picnic area.

## Physical Description 2

The Sandfly Gully Mining Heritage Area is bounded on the south by Scotsmans Track, on the east by Sandfly Road up to a point 100 metres from its crossing of Sandfly Gully, on the south by a line generally 75 metres south of Sandfly Gully across Loeser Road as far north as the junction of Loeser Road and Bright Road and then along Bright Road to the corner of fenced property, on the north by this property fence west to Sandfly Gully, on the east by a line 75 metres east of Loeser Road to its junction with Black Rock Road then along Black Rock Road for a distance of 200 metres to a point north of a large shallow dam, on the west and north by a line 50 metres west of Black Rock Road, Loeser Road and Sandfly Gully as far as a track west of the reefworkings, and on the west by this track as far as Scotsmans Track.

## Usage/Former Usage

Identified as one of Harry Hartland's distilleries.

*This place/object may be included in the Victorian Heritage Register pursuant to the Heritage Act 2017. Check the Victorian Heritage Database, selecting 'Heritage Victoria' as the place source.*

*For further details about Heritage Overlay places, contact the relevant local council or go to Planning Schemes Online <http://planningschemes.dpcd.vic.gov.au/>*