

---

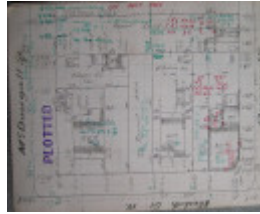
## Shop



71 Elizabeth Street, Geelong West



Source: Aitken, Honman & Huddle, 'City of Geelong West Urban Conservation Study', 1986.



GWST Fieldbook no 128, P.3, c.1912

---

### Location

71 Elizabeth Street, GEELONG WEST VIC 3218 - Property No 207719

### Municipality

GREATER GEELONG CITY

### Level of significance

Incl in HO area indiv sig

### Heritage Overlay Numbers

HO665

HO1960

### Heritage Listing

Greater Geelong City

---

### Statement of Significance

Last updated on -

STATE SIGNIFICANCE - INCLUDED IN HERITAGE PRECINCT

STATEMENT OF SIGNIFICANCE

A significant early reminder of commercial life in Geelong West from the Gold Rush until recent times, staying in continual use as a shop for over 120 years. An intact commercial building form with unusual wall treatment, possibly designed and built by the original owner and mason James Oddy.

It is of regional significance.

## POLICY RECOMMENDATIONS

### GRPS

National Estate Register

Restoration of damaged stonework and more appropriate window joinery would greatly enhance the character of this building.

## REFERENCES

Higgins Collection, Solicitor's Index 563/1/4/1861

Sands & McDougall Directories, 1920, 1928, 1934

Wises' Post Office Directory, 1858

Villamanta Ward Rate Book, 1859-60

G Seaton, *The Ashby Story - A History of Geelong West*. Geelong West City Council, 1978.

Heritage Study/Consultant	Greater Geelong - City of Geelong West Urban Conservation Study, Huddle, Aitken and Honman, 1986; Greater Geelong - Ashby Heritage Review, D Rowe and W Jacobs, 2010;
Heritage Act Categories	Registered place,
Hermes Number	17123
Property Number	

---

## Physical Description 1

### DESCRIPTION

The building is constructed of Barrabool sandstone which has been rendered in part and ruled with deeply rusticated ashlar coursing. The effect is similar to the rusticated ground floor detailing of many renaissance Revival buildings. A variety of old advertising signs may be seen on the walls. The building sits on a bluestone foundation and has a simple parapet and an angled and recessed corner entrance. There appears to have been considerable alteration to the windows and doors as timber lintels have been roughly inserted over the large shop front window. The building form appears to be original.

*This place/object may be included in the Victorian Heritage Register pursuant to the Heritage Act 2017. Check the Victorian Heritage Database, selecting 'Heritage Victoria' as the place source.*

*For further details about Heritage Overlay places, contact the relevant local council or go to Planning Schemes Online <http://planningschemes.dpcd.vic.gov.au/>*