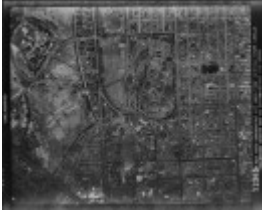

ROYAL PARK



royal park camp pell 1942
E.jpg



royal park camp pell 1942
W.jpg

Location

ROYAL PARADE AND FLEMINGTON ROAD PARKVILLE, MELBOURNE CITY

Municipality

MELBOURNE CITY

Level of significance

Heritage Inventory Site

Heritage Inventory (HI) Number

H7822-2311

Heritage Overlay Numbers

HO4

Heritage Listing

Victorian Heritage Inventory

The site has been used for both military and civic/domestic purposes:.

-1835: Important Aboriginal camping ground of the Wurundjeri people until obtained by John Batman

Interpretation of Site

1854: Site set aside for recreation purposes by Governor Latrobe

1942-1945: Camp Pell! (Military Camp)

1946-1956: Camp Hell! (Public Housing)

1956-present: Recreational Reserve

Hermes Number 191283

Property Number

History

Royal Park was originally an important Aboriginal camping ground which fell within the territory of the Wurundjeri people, with whom John Batman made his infamous land deal in 1835.

The land today is a remnant of a much larger reserve of 625 hectares (2,500 acres) set aside for recreation purposes by Governor Latrobe in 1854. In 1868 and again in 1878 the size of the park was reduced for housing allotments. In the 1880s more land was lost to make way for trams, trains and roads.

Set up as "Camp Pell" (named after a US pilot killed in action) in 1942 for American Troops stationed in Australia during WWII, the park was used as a Transit Camp primarily for medical and vocational guidance units. In 1945, the site became a demobilisation centre for the War and was decommissioned in December of the same year. In 1946, the park was used by the Housing Commission for Emergency Public Housing, in the wake of acute post-war housing shortages. Dubbed "Camp Hell", its post-war use was initially intended to merely last one year, but in actuality lasted ten.

The tin huts of Camp Hell were demolished and the park was cleaned up in time for the 1956 Melbourne Olympic Games and still exists today as a recreational reserve.

This place/object may be included in the Victorian Heritage Register pursuant to the Heritage Act 2017. Check the Victorian Heritage Database, selecting 'Heritage Victoria' as the place source.

For further details about Heritage Overlay places, contact the relevant local council or go to Planning Schemes Online <http://planningschemes.dpcd.vic.gov.au/>