

# PORTER'S ACCOMODATION SITE



IMG\_0279.JPG



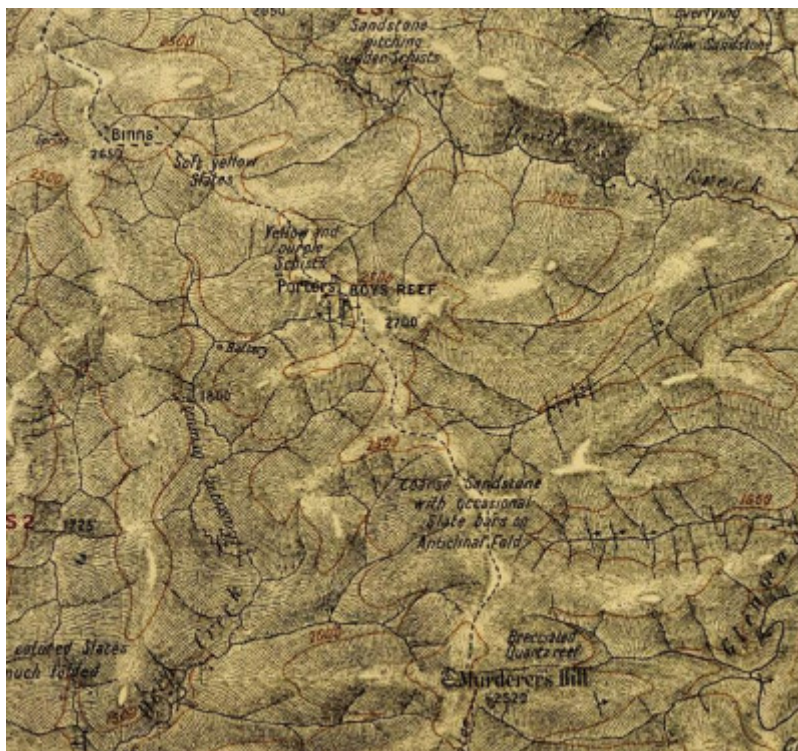
IMG\_0280.JPG



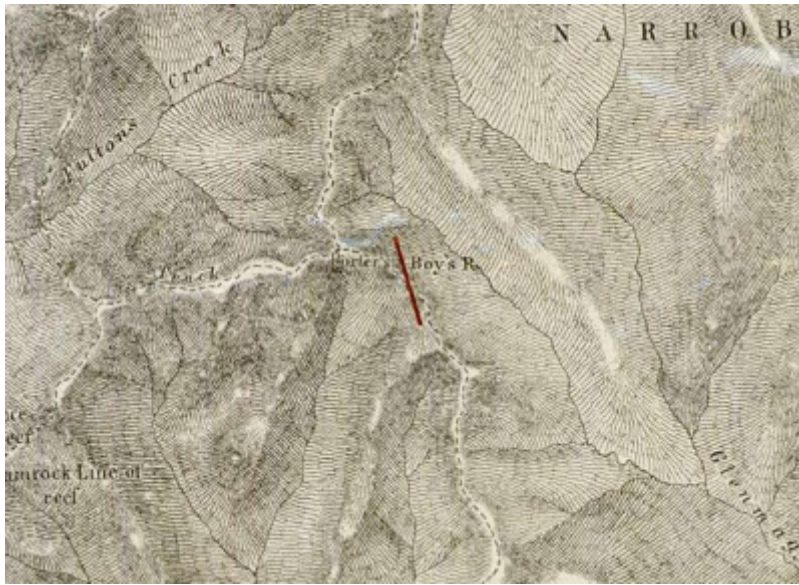
IMG\_0281.JPG



IMG\_0282.JPG



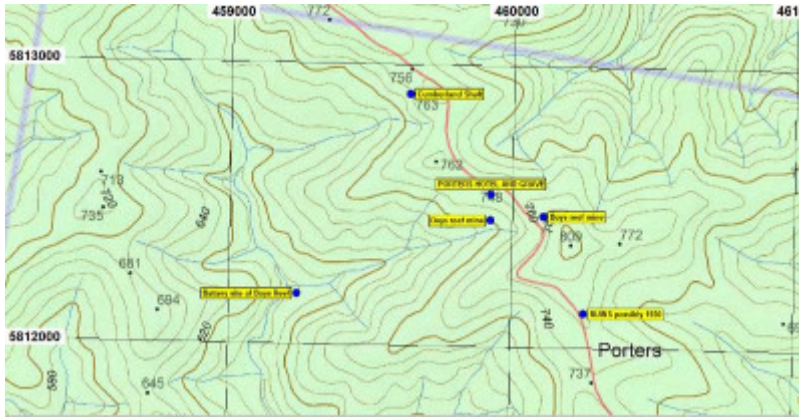
geomap porters.jpg



1884 Topographic Map



porters boys reef, 1865 Goldfields Map (titled GF65)



porters topo.jpg

---

## Location

SPRINGS ROAD YANGOURA, WELLINGTON SHIRE

## Municipality

WELLINGTON SHIRE

## Level of significance

Heritage Inventory Site

## Heritage Inventory (HI) Number

H8222-0019

## Heritage Listing

Victorian Heritage Inventory

---

Historical Significance State Forest - subject to timber harvesting activities

Other Names PORTER'S HALFWAY HOSUE,

Hermes Number 191931

Property Number

---

## History

Believed to have been established by Paker. William Cook and Timothy O'Sullivan in 1862.

*This place/object may be included in the Victorian Heritage Register pursuant to the Heritage Act 2017. Check the Victorian Heritage Database, selecting 'Heritage Victoria' as the place source.*

*For further details about Heritage Overlay places, contact the relevant local council or go to Planning Schemes Online <http://planningschemes.dpcd.vic.gov.au/>*