

---

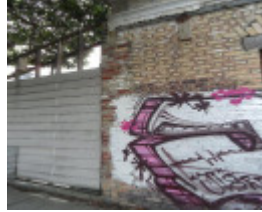
# BARCAPLE HOUSE



The Parade 116 a



116 The Parade



116 The Parade



116 The Parade



116 The Parade



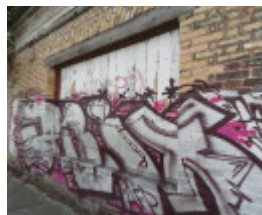
116 The Parade



116 The Parade



116 The Parade



116 The Parade



The Parade 116 b

---

## Location

116 THE PARADE, ASCOT VALE, MOONEE VALLEY CITY

## Municipality

## Level of significance

Included in Heritage Overlay

## Heritage Overlay Numbers

HO403

## Heritage Listing

Moonee Valley City

---

## Statement of Significance

Last updated on - July 31, 2015

### What is significant?

'Barcaple House', a corner shop at 116 The Parade, Ascot Vale, is significant. It was built in 1888 for Thomas Davey, while a William Davey was the first shopkeeper. He was replaced by 1892 by Moore & Sons grocers, who remained there for over a decade.

The shop stands on the north-west corner of The Parade and Ferguson Street. It is built of bichrome brick with a slated hip roof. The corner is splayed to accommodate the entry, which retains double timber doors and a basalt threshold below a highlight window. Above it is a curved pediment with 'Barcaple House 1888' incised into the cement render. Cast concrete scrolls ornament the top and sides of the pediment. There is a large timber shop window below a flat brick arch on each of the street frontages.

The post-war house behind the shop (facing Ferguson Street) is not significant.

### How is it significant?

Barcaple House is of local historical and architectural significance to the City of Moonee Valley.

### Why is it significant?

It is historically significant as a late 19th-century neighbourhood corner store associated with the development of Temperance Township. The mainly residential estate was subdivided by temperance advocates who forbade the sale or fermentation of liquor on any premises within the estate, and land was first sold in 1882. The shop is also a tangible demonstration of a bygone aspect of pre-WWII life: Prior to widespread car ownership and home refrigeration, neighbourhood corner stores were an important amenity in residential areas, where day-to-day needs could be purchased. A corner store was soon to follow residential development in a newly subdivided area, providing an important marker of that area's origins. (Criterion A)

It is architecturally significant as a representative example of a typical small-scale shop of the late 19th century, with a splayed corner and corner parapet to demonstrate its purpose, and popular materials of the day - tuckpointed bichrome brick and run and cast cement ornament to the parapet. It is rare in the Moonee Valley context for its high level of intactness, particularly the retention of its timber-framed shop windows. (Criteria D & B)

## Theme

5. Building Victoria's industries and workforce

Heritage Study/Consultant	Moonee Valley - Moonee Valley Heritage Study, Context Pty Ltd, 2015, 2015; Moonee Valley - City of Moonee Valley Stage 1 Heritage Gap Study, Context PL, 2013;
Construction dates	1888,
Hermes Number	196273
Property Number	

---

## Physical Description 1

The building at 116 The Parade is a single-storey corner shop on the north-west corner of The Parade and Ferguson Street. Walls of tuckpointed bichrome brick are built to the street boundaries. The corner is splayed to accommodate the entry, which retains double timber doors and a basalt threshold below a highlight window. Above it is a curved pediment with 'Barcaple House 1888' incised into the cement render. Cast concrete scrolls ornament the top and sides of the pediment. The rest of the pediment is low, incorporating a moulded cornice with a flat frieze for painted signage. There are remnants of painted signage along both sides of the frieze for a refrigeration business that once occupied the shop. There is remnant flashing below the frieze, indicating where the verandah once was. A slated hip roof is visible behind the parapet.

There is a large timber shop window below a flat brick arch (in cream brick) on each of the Ferguson Street and The Parade frontages. The timber window frames and sills survive, though the windows are obscured by boarding.

The shop is currently vacant and in a fair condition with some cracks and graffiti, as well as overpainting on the bricks that is almost all peeled off. There is an area of patched bricks at the west end of The Parade elevation.

The shop is attached at its rear to a house constructed in the post-war period, fronting Ferguson Street.

*This place/object may be included in the Victorian Heritage Register pursuant to the Heritage Act 2017. Check the Victorian Heritage Database, selecting 'Heritage Victoria' as the place source.*

*For further details about Heritage Overlay places, contact the relevant local council or go to Planning Schemes Online <http://planningschemes.dpcd.vic.gov.au/>*