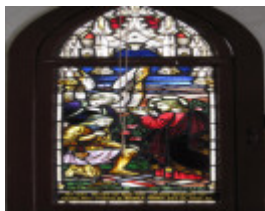
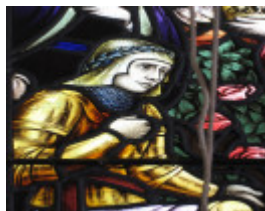

Stained Glass Window at Kaniva Presbyterian Church



Kaniva Presbyterian Church
Crown of Life BR&Co
1948 (1)



Kaniva Presbyterian Church
Crown of Life BR&Co
1948 detail



Kaniva Presbyterian Church
Crown of Life BR&Co
1948 inscription

Location

Corner Philips and Dungey Streets, Kaniva, WEST WIMMERA SHIRE

Municipality

WEST WIMMERA SHIRE

Level of significance

-

Heritage Listing

Vic. War Heritage Inventory

Heritage
Study/Consultant

Vic War Heritage Inventory - Stained Glass Memorial Windows Study, Bronwyn
Hughes, 2013;

Architect/Designer

Kerr-Morgan, William, Brooks, Robinson & Co,

Hermes Number

196644

Property Number

Memorial Window References & Acknowledgements

Bruce Meyer Don Goodwin and Jean Wallis (collator), 'Century of Service St. John's Presbyterian Church, Kaniva 1889-1989: the early history'; Brooks, Robinson & Co. job books (1923-c1966)

With thanks to Bruce Meyer.

Memorial Window Subject

Crown of Life

Memorial Window Text

n/a

Memorial Window Inscription

To the Glory of God and in sacred memory of those who served in World Wars 1914-18, 1939-45

Memorial Window Description & History

Mr. RJ McDonald ordered the *Crown of Life* memorial window from Brooks, Robinson & Co. in August 1948. The window was in two panels, the top arch measuring 15 x 17 inches and the lower main panel 37 x 17 inches. William Kerr-Morgan adapted the design from an earlier sketch which he drew up to full size. This version of the *Crown of Life* pictured a knight in armour, kneeling before Christ who reached out to place the crown upon the soldier's head. The ornamental canopy was designed to match earlier windows in the church that had also been made in the Brooks, Robinson studio.

This place/object may be included in the Victorian Heritage Register pursuant to the Heritage Act 2017. Check the Victorian Heritage Database, selecting 'Heritage Victoria' as the place source.

For further details about Heritage Overlay places, contact the relevant local council or go to Planning Schemes Online <http://planningschemes.dpcd.vic.gov.au/>