

Dwelling



Figure 2: Nine Lot subdivision of land in Nantes Street (lot 8 - 31 Nantes Street is circled). Source: Certificate of Title vol. 3946 fol. 109.



Photo 2: Side (west) elevation, 31 Nantes Street, 2015.



Photo 3: Garage outbuilding, 31 Nantes Street, 2015.



Figure 3: Geelong Annual Reliability Trial – Sporting Motorcycle Club, 1935 (Anderson is circled). Source: Geelong Advertiser, 3 August 1935, p.11.



Figure 4: Marriage of Robert Campbell & Joan Anderson, 1941. The groomsman was Jack Anderson (brother of R.C. Anderson) and the bridesmaid was Miss Noel Craddock (sister of Joan Anderson). Source: Geelong Advertiser, 2 April 1941



Source of base Map: Interactive Map, Land Services online.

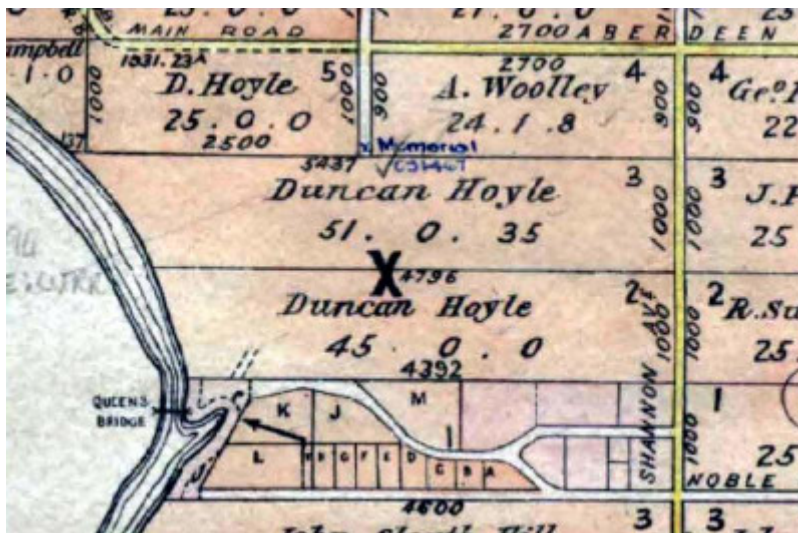


Figure 1: Portion of the Moorpanyal Parish Plan showing Crown allotments 2 & 3 of Section 10 first owned by Duncan Hoyle. Source: VPRS 16171, Public Record Office Victoria.

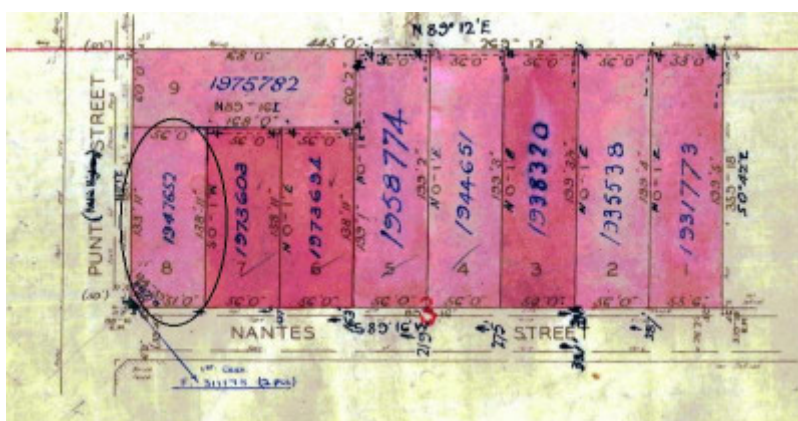


Figure 2: Nine Lot subdivision of land in Nantes Street (lot 8 - 31 Nantes Street is circled). Source: Certificate of Title vol. 3946 fol. 109.

Location

31 Nantes Street NEWTOWN, GREATER GEELONG CITY

Municipality

GREATER GEELONG CITY

Level of significance

Incl in HO area indiv sig

Heritage Overlay Numbers

HO2001

Heritage Listing

Greater Geelong City

Statement of Significance

Last updated on -

What is Significant?

The dwelling at 31 Nantes Street, Newtown, has significance as a predominantly intact example of an austere postwar Georgian Revival design, being an unusual housing type in this part of Newtown in the immediate years after World War Two. Built from 1947-48 by and for Robert Campbell Anderson, engineer, it was the Anderson family home until R.C. Anderson's death in 1969. The significant fabric includes: two storey height, symmetrical composition defined by the principal gabled roof and slightly projecting minor gabled entrance bay at the front, tiled roof cladding, clinker brick wall construction, face brick rectangular chimneys, broad eaves, flat-roofed entrance porch with timber framed door opening and multi-paned timber framed sidelights, banks of timber framed double hung first floor windows (the windows featuring horizontal sash bars) on the front and rear facade, other timber framed double hung windows, and the ventilator in the west gable end. The rendered brick, gabled garage outbuilding fronting Nantes Street, built at the time of the dwelling, also contributes to the significance of the place.

How is it significant?

The dwelling at 31 Nantes Street, Newtown, is historically and aesthetically significant at a LOCAL level.

Why is it significant?

The dwelling at 31 Nantes Street has historical significance for its associations with residential development in Newtown West immediately after the Second World War (Criterion A). Built from 1947-48 by and for, Robert Campbell Anderson, engineer, and his wife, Joan Anderson (nee Craddock), the dwelling represents one the few predominantly intact and contextually substantial houses associated with postwar middle class residential life in the local area.

The dwelling at 31 Nantes Street is aesthetically significant as a predominantly intact example of an austere postwar Georgian Revival style built in Newtown in the 1940s, as demonstrated in the gabled form, symmetry and construction (Criterion D). The subtle references to Georgian Revival design in the composition and scale of the dwelling reflect the latter stages in the evolution of this style for the middle class in the 1940s, the austere character and detailing embodying the constraints imposed on house construction after World War Two as well as a more functional approach to house design.

Heritage Overlay Map

It is recommended that the heritage overlay is applied to the site at 31 Nantes Street containing the dwelling as shown on the following map:

Theme

6. Building towns cities and the garden state

Heritage Study/Consultant	Greater Geelong - Newtown West Heritage Review 2016, D. Rowe & W. Jacobs, 2016;
Hermes Number	199435
Property Number	

Physical Description 1

The dwelling at 31 Nantes Street, Newtown, is located on a rectangular corner site, the side (west) boundary facing onto Ruthven Street. The site slopes downwards towards the rear (north). There is a substantial grassed rear yard enclosed by timber picket fencing. The yard has perimeter trees and plantings. On the west boundary is an early gabled garage having a tiled roof, broad eaves, timber framed windows and an introduced roller door. At the front is a modest yard with perimeter garden beds and mature trees. The front boundary has a low pointed timber picket fence and pedestrian gate that returns on the splay in the south-west corner.

The symmetrical, two storey, clinker brick, austere postwar Georgian Revival styled dwelling has a principal gabled roof form that traverses the site, together with a central minor gabled entrance that slightly projects towards the Nantes Street frontage. These roof forms are clad in original tiles. There are two early rudimentary face brick rectangular chimneys, including a broad external chimney breast in the east gable end. Broad overhangs are features of the eaves. The ground floor entrance bay has a flat-roofed porch with early timber framed door opening with multi-paned timber framed sidelights. The brick walls surrounding the entrance have been overpainted. The overall symmetry of the design is also reflected in the banks of timber framed double hung first floor windows (the windows featuring horizontal sash bars) on the front and rear facades. At the front of the ground floor is another timber framed window on the east side, the west side being devoid of a ground floor opening. The east facade has two original timber framed two paned double hung first floor windows, the first floor windows in the west facade being eight-paned and featuring timber shutters. These windows may have replaced earlier timber framed double hung windows in these locations. There are also timber framed ground floor windows on the west facade. Another early feature is the ventilator in the west gable end. Projecting at the rear is a gabled single storey addition.

Overall, the dwelling appears to be in good condition and of moderate-high integrity.

This place/object may be included in the Victorian Heritage Register pursuant to the Heritage Act 2017. Check the Victorian Heritage Database, selecting 'Heritage Victoria' as the place source.

For further details about Heritage Overlay places, contact the relevant local council or go to Planning Schemes Online <http://planningschemes.dpcd.vic.gov.au/>