

# BARRAGUNDA



BARRAGUNDA SOHE 2008



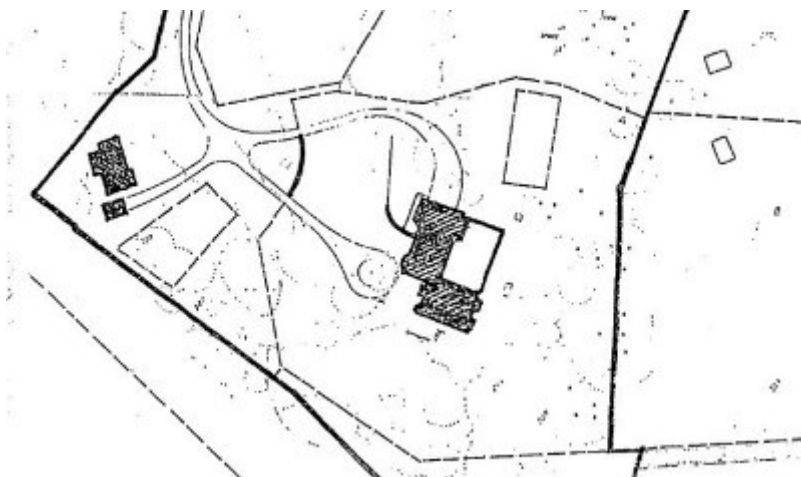
1 barragunda cape schanck  
road cape schanck view of  
property dec1984



barragunda cape schanck  
road cape schanck new wing  
dec1984



barragunda cape schanck  
road cape schanck rear view  
dec1984



h00615 plan h0615

## Location

273-277 CAPE SCHANCK ROAD CAPE SCHANCK, MORNINGTON PENINSULA SHIRE

## Municipality

## Level of significance

Registered

## Victorian Heritage Register (VHR) Number

H0615

## Heritage Overlay Numbers

HO38

## VHR Registration

February 19, 1986

## Heritage Listing

Victorian Heritage Register

---

## Statement of Significance

Last updated on - June 24, 1999

The land on which Barragunda now stands was first occupied by John Barker, a gentleman pastoralist, from the 1840s. Barker's original homestead is thought to survive nearby although altered and extended. The land was subdivided later and the licence sold to JB Were and William Howitt. The former sold again to Howitt who built Barragunda in the mid 1860s. The designer of Barragunda was Edward La Trobe Bateman a very talented English designer who was connected by birth to Benjamin Latrobe. He was also associated with influential artists and designers in London including Rosette and Owen Jones.

He came to Australia to search for gold, following William Howitt. It may be that Reed and Barns, architects, supervised Bateman's design. He certainly designed the garden. He also designed the garden at Chatsworth, in the western district and designed the house and garden of Heronswood at Dromana. The style of the house, a romantic interpretation of French Gothic, is most unusual and the later Heronswood is its only parallel.

Some of the work of Davidson and Henderson, architects based in Geelong shows similar references. Otherwise the French Gothic influence is limited to ecclesiastic and scholastic architecture. It should be noted that Georgiana McCrae, an acquaintance of Bateman, only attributes the decoration of Barragunda to him in her reminiscences. The house is built of limestone quarried locally. It has a slate roof and tower. The planning internally is conventional. Some internal details survive but no original decoration. The house was extended in the 1930s by Marcus Martin. The additions are sympathetic but are in the neo-Georgian style which Martin used at this time. Many internal fittings were reused from a mansion demolished in Toorak. The house remains substantially unchanged from that time.

The house is surrounded by a simple open park although a walled garden is enclosed by the house on two sides. It is set in a rolling landscape with views across Cape Schanck and Bushranger's Bay.

## Permit Exemptions

## General Exemptions:

General exemptions apply to all places and objects included in the Victorian Heritage Register (VHR). General exemptions have been designed to allow everyday activities, maintenance and changes to your property, which don't harm its cultural heritage significance, to proceed without the need to obtain approvals under the Heritage Act 2017.

**Places of worship:** In some circumstances, you can alter a place of worship to accommodate religious practices without a permit, but you must **notify** the Executive Director of Heritage Victoria before you start the works or activities at least 20 business days before the works or activities are to commence.

**Subdivision/consolidation:** Permit exemptions exist for some subdivisions and consolidations. If the subdivision or consolidation is in accordance with a planning permit granted under Part 4 of the *Planning and Environment Act 1987* and the application for the planning permit was referred to the Executive Director of Heritage Victoria as a determining referral authority, a permit is not required.

Specific exemptions may also apply to your registered place or object. If applicable, these are listed below. Specific exemptions are tailored to the conservation and management needs of an individual registered place or object and set out works and activities that are exempt from the requirements of a permit. Specific exemptions prevail if they conflict with general exemptions.

Find out more about heritage permit exemptions [here](#).

Construction dates	1860,
Architect/Designer	Bateman, Edward La Trobe,
Heritage Act Categories	Registered place,
Hermes Number	201
Property Number	

---

## Extent of Registration

### AMENDMENT OF REGISTER OF HISTORIC BUILDINGS

Barragunda, Cape Schanck Road, Cape Schanck, Shire of Flinders (to the extent of the whole of the house, garden and outbuildings and the land enclosed by the red line on the plan held by the Minister for Planning and Environment.

[*Victoria Government Gazette* No. 11 19 February 1986 pp. 415-416]

*This place/object may be included in the Victorian Heritage Register pursuant to the Heritage Act 2017. Check the Victorian Heritage Database, selecting 'Heritage Victoria' as the place source.*

*For further details about Heritage Overlay places, contact the relevant local council or go to Planning Schemes Online <http://planningschemes.dpcd.vic.gov.au/>*