

# The Bungalow - 221 Burke Road Glen Iris



221 Burke Road Glen Iris



221 Burke Road Glen Iris



221 Burke Road Glen Iris



221 Burke Road Glen Iris



221 Burke Road Glen Iris



221 Burke Road Glen Iris



221 Burke Road Glen Iris



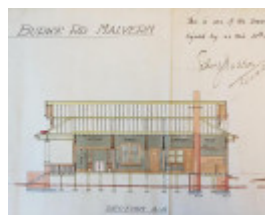
221 Burke Road Glen Iris



221 Burke Road Glen Iris



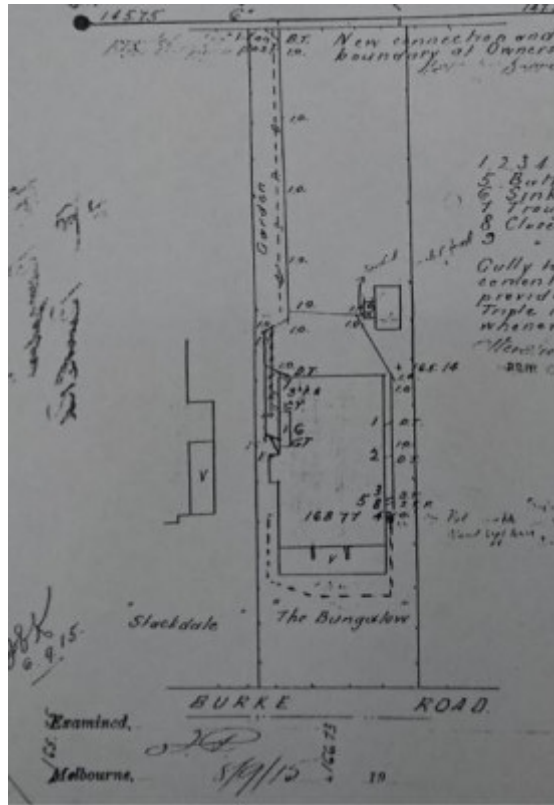
221 Burke Road Glen Iris



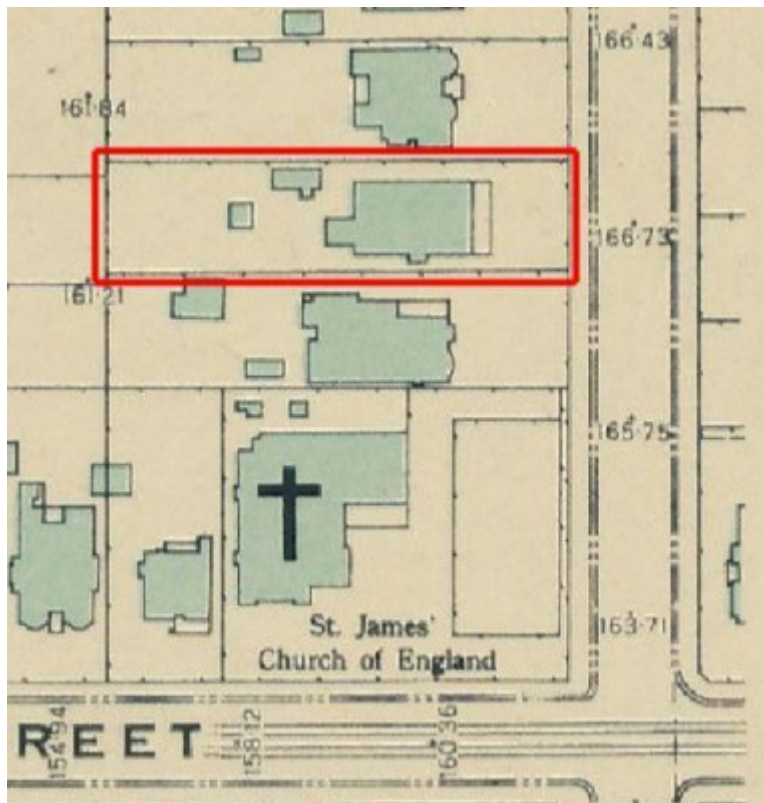
221 Burke Road Glen Iris



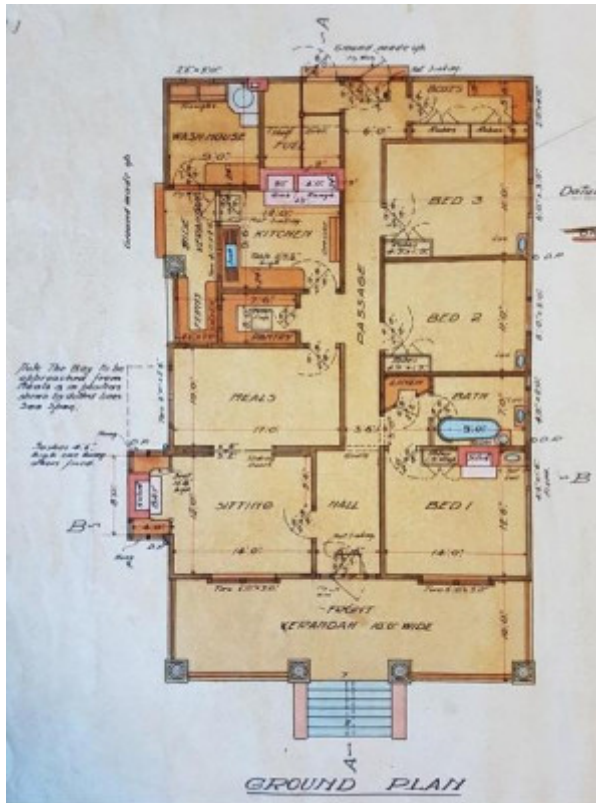
221 Burke Road Glen Iris



221 Burke Road Glen Iris



221 Burke Road Glen Iris



221 Burke Road Glen Iris

---

## Location

221 Burke Road GLEN IRIS, STONNINGTON CITY

## Municipality

STONNINGTON CITY

## Level of significance

Included in Heritage Overlay

## Heritage Overlay Numbers

HO586

## Heritage Listing

Stonnington City

---

## Statement of Significance

Last updated on - January 1, 1900

## Statement of Significance

### What is significant?

The Federation house known as 'The Bungalow', 221 Burke Road, Glen Iris, a dwelling built in 1913 for Alfred Levey.

Elements that contribute to the significance of the place include (but are not limited to):

- . the house's original external form, materials and detailing
- . the house's high level of integrity to its original design
- . the original garage.

Later alterations and additions are not significant.

### How is it significant?

'The Bungalow', 221 Burke Road, Glen Iris is of local aesthetic and historical significance to the City of Stonnington.

### Why is it significant?

'The Bungalow', 221 Burke Road, Glen Iris is a well-considered and carefully detailed example of what can broadly be defined as a Federation Bungalow house and associated garage. The simple design, with main hipped roof and prominent gabled dormers, together with the restrained use of distinctive architectural elements, presents a well-executed composition of this architectural style. However, the large timber dormer ventilators and the four massive columns of the front facade are uncommon details for the Bungalow style and create a highly original and unusual example of a Federation residence. It is one of a small number of residential buildings that can be attributed to the well-known Australian architect, Robert Haddon. [Criterion E]

'The Bungalow', 221 Burke Road, Glen Iris has strong associations with Robert Haddon, who was a prominent and highly influential Melbourne architect, architectural writer and educator from the early twentieth century until his death in 1929. Haddon was well known and widely recognised for his extensive writing and the application of strong architectural principles in his design work. The application of these principles, and the strong characteristics for which Haddon is recognised, are clearly demonstrated in 'The Bungalow'. [Criterion H]

Heritage Study/Consultant	Stonnington - City of Stonnington Federation Houses Study, GJM Heritage Pty Ltd, 2017;
Construction dates	1913,
Architect/Designer	Haddon, Robert Joseph,
Hermes Number	201618
Property Number	

---

## Physical Description 1

### Description

'The Bungalow' at 221 Burke Road is a detached dwelling situated on an allotment near the intersection of Burke Road and High Street, Glen Iris. The house is situated towards the front of a deep block with established boundary planting and a driveway and garage to the north boundary of the property. Built of red brick with tiled roof, the design displays characteristics of the Bungalow style of the Federation period.

The house is of simple rectangular form with a longitudinal broad, wide-spreading hipped roof and prominent dormer roof gables to the front and rear elevations. Unusually large louvered timber ventilators fill the gable ends,

with timber shingles above and to the gable sides. Gabled roofs with wide fascias project beyond the ventilators and are supported on large timber brackets. The main hipped roof of the house is of slightly shallower pitch towards the eaves, and exposed rafter ends project beyond deep fascias.

A wide verandah across the front facade is contained within the large hip roof of the house and is supported by four large white columns, set on low brick pedestals. Entry stairs are centrally located, with a section of timber balustrade running between columns to the south and a polygonal bay window protruding across the verandah to the north. Two plain brick chimneys are located either side of the building: a rectangular one to the north and a square one with projecting bay below to the south.

Window and door openings are simply set into the walls with projecting bluestone sills.

A small rectangular garage building, with double timber doors to the front, is located to the rear of the house on the north side. A number of mature trees are located around the boundaries of the site.

## **Integrity**

### Integrity

The house retains the majority of the original constructed form and detailing. This includes the simple rectangular plan form, hipped roof with prominent, louvered gabled roof dormers, front columns and pedestals and asymmetrically placed chimneys. The allotment has been retained in its entirety and the original garage building remains on the site.

The original design drawings for this place (see Figures 2-9) indicate that changes were made to the original design of this house before construction. Changes include:

- . Timber framed roughcast walls above a red brick sub-wall were replaced with face red brick walls with subsequent alterations to window openings;
- . slightly tapered, stuccoed chimneys were replaced with plain red brick chimneys;
- . leadlight paned windows with slightly tapered frames were replaced with inset windows with sills and the front door with slightly tapered frame was replaced with inset opening;
- . location of a bay on the south side was moved further west (this change was as indicated by Haddon on the original drawings); and
- . fascias were added to the sides of gable dormers to match the main roof.

It is assumed that these alterations were made by the architect, Robert Haddon, in consultation with his client.

Some changes have been made to the house since construction in 1913. These include:

- . removal of one front window and the verandah balustrade on the north side of the front facade and replacement with a polygonal bay window;
- . infill of the side verandah towards the rear of the house on the south facade;
- . small addition to the rear of the house;
- . addition of a window to the north side of the front room and removal of a window to a room at the rear;
- . re-lining of verandah soffit;
- . construction of the existing front fence; and
- . various internal changes.

The construction of the polygonal bay at the front of the house has altered the front facade of the house, however its location under the front verandah minimises its impact on the overall design. As was typical of much of Haddon's design work, the front facade was designed to be subtly asymmetrical and in this respect the addition

has not unduly impacted on the original design. Likewise the infill of the side verandah, and other changes listed above, do not impact greatly on the overall design. Internal changes do not impact on the external integrity of the house.

*This place/object may be included in the Victorian Heritage Register pursuant to the Heritage Act 2017. Check the Victorian Heritage Database, selecting 'Heritage Victoria' as the place source.*

*For further details about Heritage Overlay places, contact the relevant local council or go to Planning Schemes Online <http://planningschemes.dpcd.vic.gov.au/>*