

# FORMER CARLTON AND UNITED BREWERY



FORMER CARLTON AND UNITED BREWERY SOHE 2008



FORMER CARLTON AND UNITED BREWERY SOHE 2008



1 former carlton brewery malthouse swanston street facade sw may1999



carlton brewery bouverie street carlton side view



carlton brewery 1990 view



carlton brewery external front swanston street



carlton brewery sign



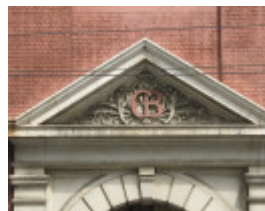
carlton brewery tower view



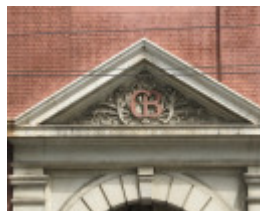
former carlton brewery bouverie street facade sw may1999



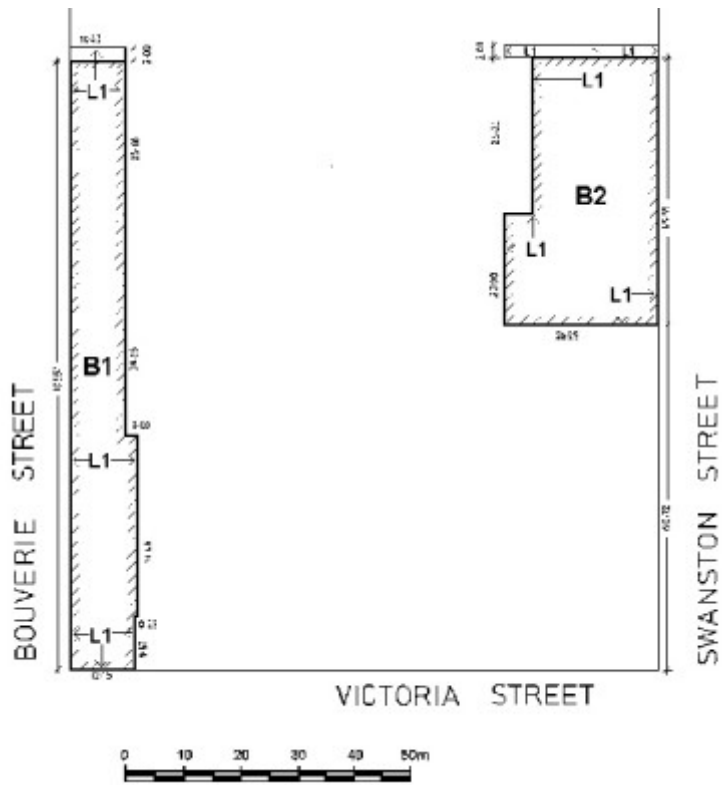
Carlton and United 009.JPG



Carlton and United 009.JPG



Carlton and United 009.JPG



Carlton United Brewery plan

---

## Location

160 VICTORIA STREET AND SWANSTON STREET CARLTON, MELBOURNE CITY

## Municipality

MELBOURNE CITY

## Level of significance

Registered

## Victorian Heritage Register (VHR) Number

H0024

## Heritage Inventory (HI) Number

H7822-0973

## Heritage Overlay Numbers

HO25

## VHR Registration

October 9, 1974

## **Amendment to Registration**

September 30, 1999

## **Heritage Listing**

Victorian Heritage Register

---

## **Statement of Significance**

Last updated on - December 13, 2023

### **What is significant?**

In 1858 Rosenberg and Company founded a brewery at 24 Bouverie Street, North Melbourne and traded as the North Melbourne Brewery. This enterprise lasted for little over twelve months and in 1859 the brewery closed down. In 1864 a Mr John Bellman reopened the brewery naming it the Carlton Brewery, after the new title given to the area immediately north of the city. In 1866 the brewery was purchased by Edward Latham and G.M. Milne and very quickly expanded in output and land development. In 1870 large stables were built on the north side of Ballarat Street and large cellars were built in Victoria Street. In 1872 the original plant and chimney were demolished and replaced by a new brewing tower. In 1881 Latham sold out to the Melbourne Brewing and Malting company but retained a large share-holding and remained as co-manager till 1884. A further bluestone warehouse was erected on Bouverie Street in 1883 and a wine and spirit store was built on the corner of Franklin and Swanston Streets. The withdrawal of Latham's capital in 1888 forced the company to amalgamate with the west end brewery at Williamstown and the Carlton and West End Breweries Limited was formed and by 1897 was second in trade of all the Melbourne breweries. The brewery continued to expand by acquiring more land and building new structures including the first major building on Swanston Street, the Malt House in 1904. In 1905 the company bought out the Victoria Brewery which had been in receivership. Carlton and United Breweries Pty Ltd was formed one year later by the amalgamation of the Carlton and Victoria Breweries and the McCracken, Castlemaine, Shamrock and Fosters Breweries. In 1913 the company became public. In 1925 the Bouverie Street frontage was completed by the construction of the bluestone building on the corner. In the 1950s the whole factory was substantially and radically refurbished and the plant and processes were renewed. Brewing on the site ceased on the site in 1987. All but the bluestone buildings on Bouverie Street and the Malt House on Swanston Street were demolished in the 1990s. The bluestone buildings on Bouverie Street were constructed in stages between 1864 and 1927. They have undergone alterations to the windows and installation of large openings to allow for vehicular access on the northern most buildings. The red brick malthouse constructed in 1904 to the designs of H.V. and A Champion is three storeys high with a basement. The latter was devoted to fermenting cellars, the first floor to storage accommodation for sugar and hops and the 21 malt storage tanks took up floors two and three. Cement dressings create an arcaded facade to Swanston Street.

### **How is it significant?**

The former Carlton and United Brewery is of historical, architectural and technical importance to the State of Victoria.

### **Why is it significant?**

The remaining buildings of the former Carlton and United Brewery are of historical significance as remnants of an early brewing industry that developed during the latter half of the 19th century and the 20th century as the principal centre of brewing in Victoria. The brewery which started on this site in 1864 developed into the Carlton and United Breweries Pty Ltd in 1906 after amalgamation of the Carlton and Victoria Breweries and the McCracken, Castlemaine, Shamrock and Fosters Breweries. The remaining buildings are important for their

representation of the early manufacturing history of Melbourne's inner suburbs.

The former Carlton and United Brewery is of architectural significance as the evolution of the company is expressed in the Bouverie Street buildings, which contain remnants of the earliest brewery and reflect the site's expansion under the direction of Edward Latham. The remaining buildings on the former Carlton United Brewery site are of architectural importance as they are expressive of 19th and 20th century brewing processes. The Malthouse on Swanston Street, designed by H.V. and A Champion is indicative of the expansion by the Carlton Brewery Ltd at the turn of the century. The cement render arcading on the facade of the building is of interest. The 21 malt store tanks contained in the Malthouse are of technical importance as they were an innovation of their time and believed to be the only ones of their type in the Southern Hemisphere when constructed. They were erected by the Monier Concrete Co and were constructed of cement and bluestone concrete, with perpendicular steel rods, laced with cylindrical rods.

## Permit Exemptions

### General Exemptions:

General exemptions apply to all places and objects included in the Victorian Heritage Register (VHR). General exemptions have been designed to allow everyday activities, maintenance and changes to your property, which don't harm its cultural heritage significance, to proceed without the need to obtain approvals under the Heritage Act 2017.

Places of worship: In some circumstances, you can alter a place of worship to accommodate religious practices without a permit, but you must [notify](#) the Executive Director of Heritage Victoria before you start the works or activities at least 20 business days before the works or activities are to commence.

Subdivision/consolidation: Permit exemptions exist for some subdivisions and consolidations. If the subdivision or consolidation is in accordance with a planning permit granted under Part 4 of the *Planning and Environment Act 1987* and the application for the planning permit was referred to the Executive Director of Heritage Victoria as a determining referral authority, a permit is not required.

Specific exemptions may also apply to your registered place or object. If applicable, these are listed below. Specific exemptions are tailored to the conservation and management needs of an individual registered place or object and set out works and activities that are exempt from the requirements of a permit. Specific exemptions prevail if they conflict with general exemptions.

Find out more about heritage permit exemptions [here](#).

### Specific Exemptions:

General Conditions:

1. All exempted alterations are to be planned and carried out in a manner which prevents damage to the fabric of the registered place or object.
2. Should it become apparent during further inspection or the carrying out of alterations that original or previously hidden or inaccessible details of the place or object are revealed which relate to the significance of the place or object, then the exemption covering such alteration shall cease and the Executive Director shall be notified as soon as possible.
3. If there is a conservation policy and plan approved by the Executive Director, all works shall be in accordance with it.
4. Nothing in this declaration prevents the Executive Director from amending or rescinding all or any of the permit exemptions.
5. Nothing in this declaration exempts owners or their agents from the responsibility to seek relevant planning or building permits from the responsible authority where applicable.

Exterior

- \* Minor repairs and maintenance which replace like with like.
- \* Removal of any extraneous items such as air conditioners, pipe work, ducting, wiring, antennae, aerials etc, and making good.
- \* Installation or repair of damp-proofing by either injection method or grouted pocket method.
- \* Works required for making buildings safe and protecting them against weather and vandalism, eg. temporary fencing and closing up of openings.

#### Interior of Bouverie Street Bluestone Buildings

- \* All interior alterations that do not adversely affect the exterior appearance and structure of the building.

Construction dates            1864,  
 Heritage Act Categories    Registered place,  
 Hermes Number                208  
 Property Number

## History

### Contextual History:

E.G. Latham, an Englishman, who was born in 1839, came to Victoria in 1864. His partner was Mr. G.M. Milne, brother of the Hon. Sir William Milne of Adelaide. Not much is known of Mr Milne and Mr Latham who was apparently a very active and shrewd businessman soon eclipsed his interest in the brewery. Mr Latham did not settle in Melbourne until 1866. When he arrived in Victoria he soon crossed the strait to Tasmania, where he married in 1865. Business in Hobart town was not suitable to his talents so he returned to Melbourne where he closed for the brewery with Mr.Milne in 1866 (D.Sloane and J. Sullivan, 1966).

### History of Place:

The Carlton Brewery had its beginnings in 1858, when Rosenberg and Co. established the North Melbourne Brewery at 24 Bouverie Street. Although this venture lasted more than a year, the brewery was re-opened in 1864 by John Bellman, who re-named it the Carlton Brewery. Bellman continued to use the plant operated by Rosenberg and Co., and built new offices and stores along the Bouverie Street frontage.

In 1866 the brewery was purchased by Edward Latham and G.M. Milne and it was under Latham's tutelage that the business began to prosper. During the next twenty years, as the plant began to expand more land was purchased, and new buildings were erected. In 1870 large stables were built on the north side of Ballarat Street and large cellars were built in Victoria Street. In 1872 the original plant and chimney were demolished and replaced by a new brewing tower. In 1881 Latham sold out to the Melbourne Brewing and Malting company but retained a large shareholding and remained as co-manager till 1884. It was during the ownership of the brewery by this company that the ale stores at the corner of Ballarat Road and Bouverie Street were built, in 1883 and a wine and spirit store was built on the corner of Franklin and Swanston Streets. Although subsequently altered, the overall form of this building remains intact.

In 1888 Latham disposed of all his interests in the company. The withdrawal of Latham's capital forced the company to amalgamate with Terry's West End Brewery at Williamstown (which turned into a depot) to form the Carlton and West End Breweries Limited and by 1897 was second in trade of all the Melbourne breweries.

The Melbourne Brewing and Malting Company amalgamated with Terry's West End Brewery in 1889 to form the Carlton and West End Breweries Limited, a move which no doubt prompted the erection in 1890 of new offices adjoining Bellman's Bouverie Street building. These offices have undergone few external alterations.

The depression of the early 1890s forced the Carlton and West End Breweries Limited into liquidation, and in 1896 a new company was formed under the title of the Carlton Brewery Limited. As the company gradually recovered, it was able to capitalise on the failure of a number of other Melbourne breweries and secure their trade. This period of recovery and expansion culminated in 1901 in the erection of an extension to the 1890 offices. Originally built to house the cashier and accountant's offices, this building subsequently became the main

entrance to the Brewery.

In 1901 a new boiler house and chimney was constructed. The brewery continued to expand by acquiring more land and building new structures including the first major building on Swanston Street, the Malt House in 1904, and in 1905 the company bought out the Victoria Brewery which had been in receivership. Carlton and United Breweries Pty Ltd was formed one year later by the amalgamation of the Carlton and Victoria Breweries and the McCracken, Castlemaine, Shamrock and Fosters Breweries. The plant at Carlton continued to be used for brewing by the new company, as did the Victoria Brewery, which had been purchased by Carlton Brewery Limited in 1905. The plants owned by the other breweries were retained for use in times of emergency. No great extensions were made to the Carlton site until 1910 when the cask washing area on Swanston Street was enclosed by a new building designed by Billings and Peck. This continued the arcaded facade of the Malthouse and is today substantially what one sees on the Swanston Street frontage.

By 1909, the plant at Carlton extended over most of the block bounded by Madeline (now Swanston), Victoria and Bouverie Streets, and Ballarat Road. In 1910, to facilitate speedy loading and unloading of casks, a road was formed through the site from Swanston Street to Bouverie Street, where a second entrance was cut through the old bluestone offices and stores built by John Bellman.

In 1913 the company became public. The next major alteration to the Bouverie Street buildings was the addition, in 1920, of a third storey to part of the 1864 John Bellman building giving this part of the facade the appearance of a continuation of the adjacent ale stores. Then in 1925 the Bouverie Street frontage was completed by the construction of the bluestone building on the corner and the tanks were updated. Then, in 1927, further extensions to the to the 1890 and 1901 offices was made, thus completing a continuous line of bluestone buildings along Bouverie street from Victoria Street to Ballarat Road. This building housed executive offices and a board room, a function it continued to serve until the Brewery's closure.

The company continued to prosper, and in 1924, began purchasing hotels throughout the state. Then in 1925 CUB's major competitor, the Melbourne Co-Operative Brewing Company, was absorbed, and its brewery at Abbotsford was utilised for the production of bottled and cask beer. By 1949, a rationalisation of production processes at the three plants had brought about the end of bottling at Carlton.

Major alterations to the northern end of the Bouverie Street building to facilitate speedier loading of casks for delivery was begun in 1940, when a new vehicular opening was made adjacent to the 1910 archway, providing access to a loading platform behind. Over subsequent years, the whole of the ground floor of the three storey section of Bellman's 1864 building was opened up, providing a continuous run of vehicular openings along the Bouverie street facade. Then in 1955, the 1883 Ale Stores were completely transformed into a two-storey building, with a bulk dispatch area on the ground floor, and bright beer cellars at the upper level. To facilitate these works, the existing floors removed, as was the entire Bouverie Street facade. A continuous run of vehicular openings was provided along Bouverie Street, and above these the bluestone walling was reconstructed, although with the second storey windows omitted, and the third storey windows relocated incorrectly.

Production ceased at the Carlton Brewery in 1987. The Victoria Brewery closed down in 1983.

#### The Malthouse

The Australian Brewers Journal 20 February 1906 pp259-261

The whole of the design of the building and machinery was suggested by Lieut. Col. Ballenger, the company's head brewer. The architects were Messrs H.V & A. Champion and the builders were Messrs. Baxter and Boyne, to whom credit is due for having finished their work some weeks before contract time. The tanks were erected by the Monier Concrete Co. and to the old and esteemed firm of Robert Bodington, the well known millwrights and malting engineers of Melbourne is due the credit of having erected and installed the elevators, conveyors, shafting & c. The manager of the brewery at the time was Mr. T.L.Parker. The building was so arranged that the taking in of malt from the lorries could go continuously without any clashing or interfering with other work, there being a right of way leading into Ballarat Street branching off from the passage way. Wagons would enter by Madeline Street and leave by Ballarat Street.

New Malt stores and fermenting cellars in Madeline Street Carlton adjoining the brewery. It will be seen that they are most ornate in construction being at the same time built on practical, scientific and modern principles and are of notable proportions. The buildings are thoroughly fireproof and contain very spacious floors and a basement. The latter is devoted to fermenting cellars, the first floor to storage accommodation for sugar and hops and the

huge malt storage tanks take up floors two and three. The buildings are solidly erected of brick and cement throughout and no expense has been spared to make them lasting and up to date in every particular. Over the entrance the monogram C.B is worked in a very pretty design. The erection of these new buildings has enabled the company to concentrate all of its vast operations in the one block and at the same time to effectively cope with their very large and increasing output.

The cellars are situated along Madeline Street (Swanston Street) and were constructed to be hidden from the view of the public. No entrance could be gained except from within the brewery. They were designed with high roofs, ceilings level with the street, systematically drained and connected with the Metropolitan Board of Works sewerage scheme. The ceilings are supported by a number of tall steel columns, the floors were scientifically graded in cement. The frontage in each instance is 63 feet by a depth of 83 and 69 feet respectively.

#### Weighing and receiving the Malt

The new building was divided in the centre to allow for a passageway for lorries. The malt-laden wagons would enter here from the front in Madeline Street. Immediately inside the large gates was a large ten-ton Avery weighing machine. Also inside the brewery gates was a large hopper. Here two men and the driver would shoot the malt into the hopper.

#### The twenty one vast tanks

The main feature of the building was the malt store tanks. They were an innovation for their time and were believed to be the only ones of their type in the Southern Hemisphere. They were erected by the Monier Concrete Co, who succeeded in obtaining the tender in competitions with all the leading boiler makers of Victoria, the cost of building them being £100 cheaper per tank than the steel ones. There were 21 of these tanks installed, twelve in the southern half of the building and nine in the northern portion. The tanks are built of cement and bluestone concrete, with perpendicular steel rods, laced with cylindrical ones. The bottoms and dome tops are made of the same material. They go through the height of two floors, their capacity is 1450 bags or close upon 6000 bushels each. This makes a total holding power in the 21 tanks of over 120, 000 bushels.

Associated People:

## Assessment Against Criteria

### Criterion A

The historical importance, association with or relationship to Victoria's history of the place or object.

The remaining buildings of the former Carlton and United Brewery are of historical significance as remnants of an early brewing industry that developed during the latter half of the 19th century and the 20th century as the principal centre of brewing in Victoria. The brewery which started on this site in 1864 developed into the Carlton and United Breweries Pty Ltd in 1906 after amalgamation of the Carlton and Victoria Breweries and the McCracken, Castlemaine, Shamrock and Fosters Breweries. They are important for their representation of the early manufacturing history of Melbourne's inner suburbs.

### Criterion B

The importance of a place or object in demonstrating rarity or uniqueness.

### Criterion C

The place or object's potential to educate, illustrate or provide further scientific investigation in relation to Victoria's cultural heritage.

### Criterion D

The importance of a place or object in exhibiting the principal characteristics or the representative nature of a place or object as part of a class or type of places or objects.

The remaining buildings on the former Carlton and United Brewery site are of architectural importance as they are expressive of 19th and 20th century brewing processes.

### Criterion E

The importance of the place or object in exhibiting good design or aesthetic characteristics and/or in exhibiting a richness, diversity or unusual integration of features.

The former Carlton and United Brewery is of architectural significance as the evolution of the company is expressed in the Bouverie Street buildings, which contain remnants of the earliest brewery and reflect the site's expansion under the direction of Edward Latham. The Malthouse on Swanston Street, designed by H.V. and A

Champion is indicative of the expansion by the Carlton Brewery Ltd at the turn of the century.

#### Criterion F

The importance of the place or object in demonstrating or being associated with scientific or technical innovations or achievements.

The 21 malt store tanks contained in the Malthouse building are of technical importance as they were an innovation of their time and believed to be the only ones of their type in the Southern Hemisphere when constructed. They were erected by the Monier Concrete Co and were constructed of cement and bluestone concrete, with perpendicular steel rods, laced with cylindrical ones.

#### Criterion G

The importance of the place or object in demonstrating social or cultural associations.

#### Criterion H

Any other matter which the Council considers relevant to the determination of cultural heritage significance

## Extent of Registration

### NOTICE OF REGISTRATION

As Executive Director for the purpose of the Heritage Act, I give notice under section 46 that the Victorian Heritage Register is amended in that the Heritage Register Number 24 in the category described as a Heritage Place is now described as:

Former Carlton and United Brewery, 2 - 76 Bouverie Street and Swanston Street, Carlton, Melbourne City Council

#### EXTENT:

1. All the buildings known as the former Carlton and United Brewery buildings B1 and former Malthouse B2 marked on Diagram 26 held by the Executive Director.
2. All the land marked L1 on Diagram 26 held by the Executive Director, being part of the land described in Certificate of Title Vol. 7620 Fol. 130 and Vol. 4617 Fol. 290.

Dated: 17 September 1999

RAY TONKIN

Executive Director

[Victoria Government Gazette G 39 30 September 1999 p.2202]

---

*This place/object may be included in the Victorian Heritage Register pursuant to the Heritage Act 2017. Check the Victorian Heritage Database, selecting 'Heritage Victoria' as the place source.*

*For further details about Heritage Overlay places, contact the relevant local council or go to Planning Schemes Online <http://planningschemes.dpcd.vic.gov.au/>*