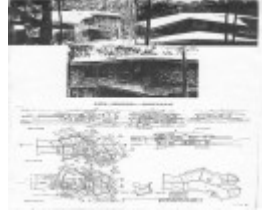

ROBERT AND ELIZABETH LEY HOUSE



22492 Robert and Elizabeth Ley House - 58 Berrima Road, Donvale (1)



22492 Floor Pland & Elevations of Robert and Elizabeth Ley House - 58 Berrima Road, Donvale

Location

58 Berrima Road DONVALE, Manningham City

Municipality

MANNINGHAM CITY

Level of significance

Included in Heritage Overlay

Heritage Overlay Numbers

HO15

Heritage Listing

Manningham City

Statement of Significance

Last updated on -

Of local significance

Heritage Study/Consultant Manningham - Manningham Heritage Study Review, Context Pty Ltd, 2006;

Hermes Number 22492

Property Number

Historical Australian Themes

Local Themes

8.02 - Architects

Physical Description 1

A two-storey orange brick house, with low-pitched gable, corrugated steel roofs, on a native bushland setting overlooking Mullum Mullum Creek. A tightly designed, but otherwise characteristically organic, prismatic plan, something like a two headed fish. The construction is conventional.

It is a characteristic and tightly designed work by Burgess in his virtually unique organic approach. It is importantly complements the much more sprawling 42 Berrima Road as a pair.

Physical Conditions

Condition Excellent

Integrity

Integrity Intact

This place/object may be included in the Victorian Heritage Register pursuant to the Heritage Act 2017. Check the Victorian Heritage Database, selecting 'Heritage Victoria' as the place source.

For further details about Heritage Overlay places, contact the relevant local council or go to Planning Schemes Online <http://planningschemes.dpcd.vic.gov.au/>