

HILL VIEW



23526 Hillview Nareen former Tarrayoukyan SS 1951



23526 Hillview Nareen cellar 1964



23526 Hillview Nareen former Tarrayoukyan SS 1952



23526 Hillview Nareen electrical system 1982



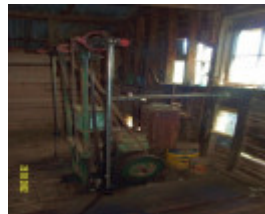
23526 Hillview Nareen former Tarrayoukyan SS 1953



23526 Hillview Nareen cupboard 1980



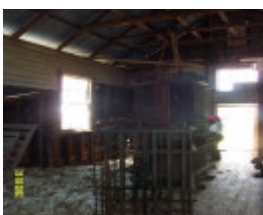
23526 Hillview Nareen former Tarrayoukyan SS 1955



23526 Hillview Nareen former Tarrayoukyan SS 1956



23526 Hillview Nareen former Tarrayoukyan SS 1957



23526 Hillview Nareen former Tarrayoukyan SS 1960



23526 Hillview Nareen interior 1970



23526 Hillview Nareen interior 1969



23526 Hillview Nareen interior 1971



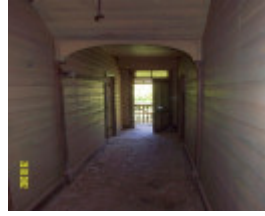
23526 Hillview Nareen interior 1974



23526 Hillview Nareen interior 1978



23526 Hillview Nareen interior 1979



23526 Hillview Nareen interior hall 1975



23526 Hillview Nareen interior hall 1981



23526 Hillview Nareen north side 1966



23526 Hillview Nareen press clipping 1959



23526 Hillview Nareen rear elevation 1984



23526 Hillview Nareen rear elevation 1985



23526 Hillview Nareen second wing 1962



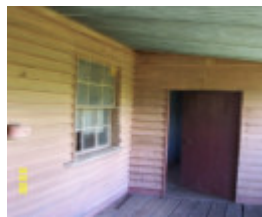
23526 Hillview Nareen south west view 1963



23526 Hillview Nareen verandah 1965



23526 Hillview Nareen verandah bathroom 1976



23526 Hillview Nareen verandah 1968



23526 Hillview Nareen
verandah bathroom 1977



23526 Hillview Nareen
window 1967



23526 Hillview Nareen
window detail 1983



23526 Hillview Nareen
woolpress 1954



23526 Hillview Nareen
woolpress 1958

Location

off Steep Gully Road NAREEN, Southern Grampians Shire

Municipality

SOUTHERN GRAMPIANS SHIRE

Level of significance

Stage 2 study complete

Heritage Listing

Southern Grampians Shire

Statement of Significance

Last updated on - January 20, 2004

What is significant?

Hillview is a timber cottage located 1.5km south of Steep Gully Road, and about 1.0km west of the Coleraine-Nareen Road.. It seems to have been built in the mid 1860s as a result of the subdivision of land under the Land Selection Acts. The cottage is of interest for its simple vernacular style and its traditional forms and details It remains in good condition with a high degree of integrity. The house is set within an appropriate cottage garden. Some distance to the south-west of the cottage there is a woolshed, a former timber school building converted for the purpose. It was altered and extended for the conversion but is in good condition.

How is it significant?

Hill View is of historical and architectural significance to the community of Nareen and to the Southern Grampians Shire.

Why is it significant?

Hill View is of historical significance because it reflects the major change in land ownership brought about by the land Selection Acts and it is of architectural interest because of its very high degree of integrity and as an excellent example of a 1860s vernacular timber cottage, and for its form and details.

Heritage Study/Consultant	Southern Grampians - Southern Grampians Shire Heritage Study, Timothy Hubbard P/L, Annabel Neylon, 2002;
Construction dates	1874,
Heritage Act Categories	Registered place,
Hermes Number	23526
Property Number	

Physical Conditions

The house and garden are in fair condition.

Physical Description 1

Hill View is a single storey timber building comprising many parts. It is positioned on a considerable slope which accommodates a cellar under the front verandah. The northern end of the verandah has been enclosed to form a small bathroom. The central passage opens into a narrow hall with rooms opening off it. This leads into a larger room with a large stone fireplace on the south wall, possibly once used as a kitchen/dining room. Further, smaller additions are at the rear and this section has been a kitchen with a very large stone fireplace, now partly demolished. A more substantial extension was made on the southern elevation, similar in form to the front wing and with its own verandah. Remnants of a special low voltage power supply survive on this verandah. A chimney has been removed from the west side of this extension. The doors are four panelled and the windows are twelve paned double hung sashes throughout. The whole is typical of vernacular construction in its forms, materials, scale and detailing. The building retains a very high degree of integrity but it is in very poor condition with some sections at the rear in a ruinous condition. The house is abandoned. The skeleton of the early and once elaborate cottage garden survives in the form of fruit trees and some ornamental shrubs but in a neglected condition. The Apple trees (*Malus sp.*) appear to date from the mid-1860s and there is a mature Loquat tree (*Eriobotrya japonica*).

Some distance to the south-west of the house there is a woolshed, a former timber school building converted for the purpose. It was altered and extended for the conversion but is in good condition. It contains a large woolpress.

There are several Radiata pines (*Pinus radiata*) at the rear of the house and near the woolshed.

Historical Australian Themes

Theme 6 Educating

6.2 Establishing schools

6.5 Educating people in remote places

Theme 8: Developing Australia's Cultural Life

8.14 Living in the country and rural settlements

Theme 9: Marking the phases of Life

9.3 Forming families and partnerships

9.3.2 Bringing up children

Usage/Former Usage

House is abandoned and woolshed is used intermittently.

Integrity

Very high

Physical Description 2

John McDonald, first owner under Land Selection Acts

This place/object may be included in the Victorian Heritage Register pursuant to the Heritage Act 2017. Check the Victorian Heritage Database, selecting 'Heritage Victoria' as the place source.

For further details about Heritage Overlay places, contact the relevant local council or go to Planning Schemes Online <http://planningschemes.dpcd.vic.gov.au/>