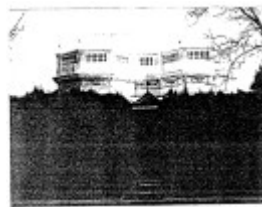


---

## HOUSE (BOLINDA)



43 Kent Street.JPG



Flemington &  
Kensington Conservation  
Study 1985

---

### Location

43 KENT STREET,, FLEMINGTON VIC 3031 - Property No 174168

### Municipality

MOONEE VALLEY CITY

### Level of significance

Included in Heritage Overlay

### Heritage Overlay Numbers

HO58

### Heritage Listing

Moonee Valley City

---

### Statement of Significance

Last updated on -

Isaac McClelland, a gentleman, appears to have built what was initially a four-room brick house in 1884: it was described as first 8 rooms then six after probable additions in 1888-9. By 1900 it, an intricate garden layout and a trellis fernery were shown on the MMBW Detail Plan.

Harry and Eleanor McClelland were the owners by early this century; a workshop at the rear being used by the firm McClelland and Vary (Egbert) who were accredited as 'art furniture manufacturers'. Eleanor McClelland appears to be the last in the family to own the house; Amy Bray being the owner' by the 1940s.

Heritage Study/Consultant	Moonee Valley - Flemington and Kensington Conservation Study, City of Melbourne, 1985;
Construction dates	1884,
Hermes Number	23855
Property Number	

---

## Physical Description 1

An unusual double bayed and parapetted stuccoed villa which follows the Italian Renaissance manner more so than others by its. Corinthian order pilasters at windows, ornate balustraded parapet, swagged lower entablature, ironwork and gabled porch entrance. An overgrown hedge is at the boundary. The house appears to be generally original except for the fence.

This is one of a row of individually important houses. A non-verandahed version of this design, from 1886, is at 301 Flemington Road, North Melbourne (in the City of Melbourne).

*This place/object may be included in the Victorian Heritage Register pursuant to the Heritage Act 2017. Check the Victorian Heritage Database, selecting 'Heritage Victoria' as the place source.*

*For further details about Heritage Overlay places, contact the relevant local council or go to Planning Schemes Online <http://planningschemes.dpcd.vic.gov.au/>*