

CHEWTON TOWN HALL



CHEWTON TOWN HALL
SOHE 2008



h01015 1 chewton town hall
pyrenees highway chewton
front she project 2003



chewton town hall pyrenees
highway chewton interior she
project 2003



chewton town hall pyrenees
highway chewton portable
police lock up she project
2003



chewton town hall pyrenees
highway chewton town hall
and post office she project
2003



chewton town hall pyrenees
highway chewton west wall
she project 2003



h01015 chewton town hall
pyrenees hwy chewton front
view sep1988



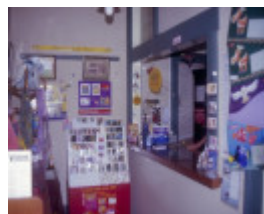
Former Chewton Post Office
Pyrenees Hwy Chewton Front
and East Wall SHE Project
2004



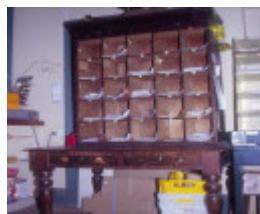
Former Chewton Post Office
Pyrenees Hwy Chewton
North East Corner SHE
Project 2004



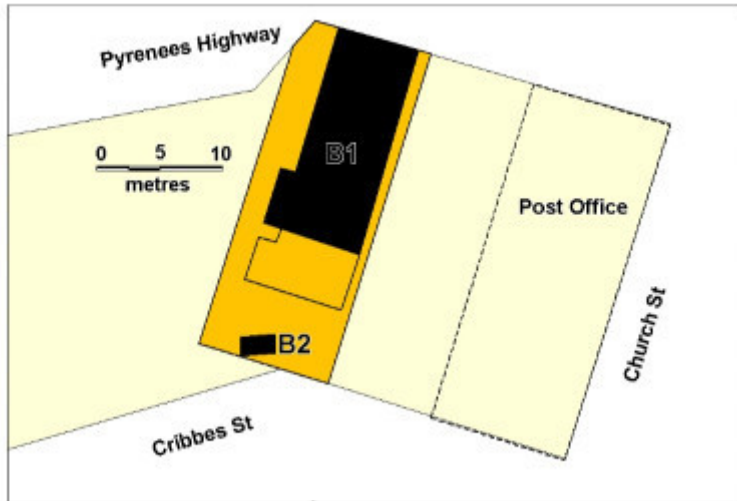
Former Chewton Post Office
Pyrenees Hwy Post Office
and Town Hall SHE Project
2004



Former Chewton Post Office
Pyrenees Hwy Chewton
Public Space SHE Project
2004



Former Chewton Post Office
Pyrenees Hwy Chewton Front
Sorting Mailbox SHE Project
2004



chewton town hall plan

Location

145 MAIN ROAD CHEWTON, MOUNT ALEXANDER SHIRE

Municipality

MOUNT ALEXANDER SHIRE

Level of significance

Registered

Victorian Heritage Register (VHR) Number

H1015

Heritage Overlay Numbers

HO725

VHR Registration

August 20, 1982

Heritage Listing

Victorian Heritage Register

Statement of Significance

Last updated on - May 4, 1999

The Chewton town hall is the one of the few surviving structure evidencing the operation of the former Borough of Chewton, which existed between 1860 and 1916. It is one of the few buildings in the shire of Metcalfe to survive from the gold rush period of the 1850s. It is a substantially intact and rare example of a small town hall.

The Chewton town hall evidences a wide range of private and public uses reflecting the varying fortunes of an area of settlement that is of central importance in the history of the Colony of Victoria.

Permit Exemptions

General Exemptions:

General exemptions apply to all places and objects included in the Victorian Heritage Register (VHR). General exemptions have been designed to allow everyday activities, maintenance and changes to your property, which don't harm its cultural heritage significance, to proceed without the need to obtain approvals under the Heritage Act 2017.

Places of worship: In some circumstances, you can alter a place of worship to accommodate religious practices without a permit, but you must **notify** the Executive Director of Heritage Victoria before you start the works or activities at least 20 business days before the works or activities are to commence.

Subdivision/consolidation: Permit exemptions exist for some subdivisions and consolidations. If the subdivision or consolidation is in accordance with a planning permit granted under Part 4 of the *Planning and Environment Act 1987* and the application for the planning permit was referred to the Executive Director of Heritage Victoria as a determining referral authority, a permit is not required.

Specific exemptions may also apply to your registered place or object. If applicable, these are listed below. Specific exemptions are tailored to the conservation and management needs of an individual registered place or object and set out works and activities that are exempt from the requirements of a permit. Specific exemptions prevail if they conflict with general exemptions.

Find out more about heritage permit exemptions [here](#).

Construction dates	1861,
Heritage Act Categories	Registered place,
Hermes Number	2697
Property Number	

Extent of Registration

AMENDMENT OF REGISTER OF HISTORIC BUILDINGS

Historic Building No. 1015.

Town Hall, Pyrennees Highway, Chewton, Shire of Metcalfe.

(To the extent of:

All of the building known as Chewton Town Hall marked B1 on Plan No. 605359, signed by the Chairperson, Historic Buildings Council and held by the Director, Historic Buildings Council; and

All of the land marked L1 on Plan No. 605359 signed by the Chairperson, Historic Buildings Council and held by

the Director, Historic Buildings Council, being all the land described in Crown Allotment 9, Section F, Parish of Chewton, County of Talbot.)

[*Victoria Government Gazette* No. G18 5 May 1994 p.1102]

This place/object may be included in the Victorian Heritage Register pursuant to the Heritage Act 2017. Check the Victorian Heritage Database, selecting 'Heritage Victoria' as the place source.

For further details about Heritage Overlay places, contact the relevant local council or go to Planning Schemes Online <http://planningschemes.dpcd.vic.gov.au/>