

HALSTEAD



HALSTEAD SOHE 2008



HALSTEAD SOHE 2008



HALSTEAD SOHE 2008



1 halstead caufield front view
jul1978



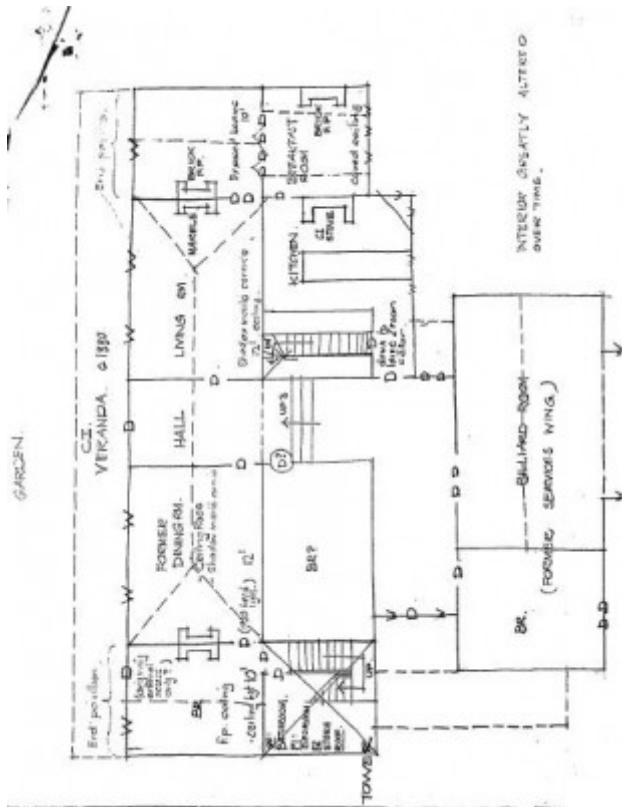
halstead caufield detail of
front entrance jul1978



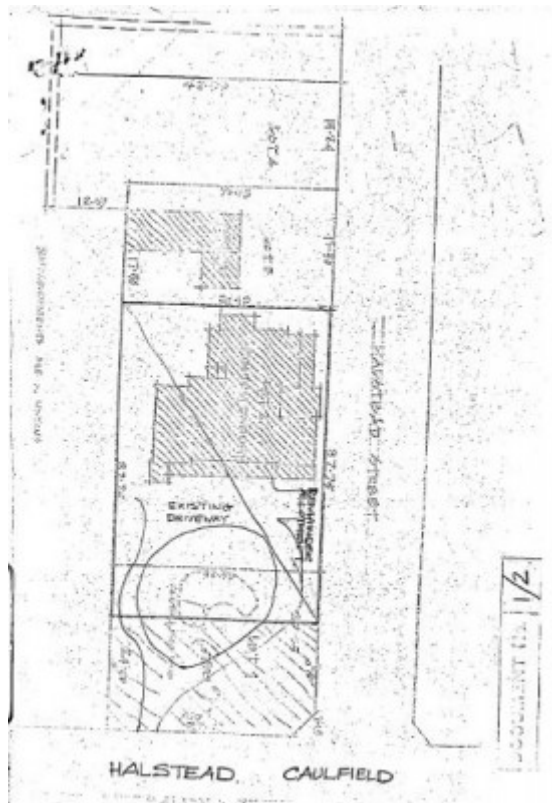
halstead caufield verandah
pavilion oct1981



halstead caufield view of
house jul1978



h00450 h0450 plan a



h00450 h0450 plan b

Location

23 BAMBRA ROAD CAULFIELD NORTH, GLEN EIRA CITY

Municipality

GLEN EIRA CITY

Level of significance

Registered

Victorian Heritage Register (VHR) Number

H0450

Heritage Overlay Numbers

HO10

VHR Registration

August 29, 1979

Heritage Listing

Victorian Heritage Register

Statement of Significance

Last updated on - June 17, 1999

What is significant?

Halstead is believed to be the oldest standing residence in Caulfield constructed in 1857 with subsequent additions during the 19th Century. The house was built for and owned by James Dickson, a stock agent, until his death in 1880.

How is it significant?

Although on a much reduced parcel of land, Halstead is one of the few remaining remnants of Caulfield when it was an area of mansion houses occupied by town residing squatters, professional and business men. It is important for its place in the socio-economic history of south eastern suburban Melbourne, the inland pattern of development stretching from Malvern through Murrumbeena.

Why is it significant?

Architecturally the single storey building displays a history of alteration and addition. Its main front presents with a single storey cast iron veranda across the full width, including the two pavillion wings at each end. Located towards the rear on the Halstead Street side is the substantial three storey tower with its Mansard roof and cast-iron balustrade which makes the house clearly visible from Halstead Street and Bambra Road. Because of internal alteration the importance of the building relates to the exterior only of the main house. Halstead is believed to be the oldest standing residence in the city of Caulfield.

Permit Exemptions

General Exemptions:

General exemptions apply to all places and objects included in the Victorian Heritage Register (VHR). General exemptions have been designed to allow everyday activities, maintenance and changes to your property, which don't harm its cultural heritage significance, to proceed without the need to obtain approvals under the Heritage Act 2017.

Places of worship: In some circumstances, you can alter a place of worship to accommodate religious practices without a permit, but you must **notify** the Executive Director of Heritage Victoria before you start the works or activities at least 20 business days before the works or activities are to commence.

Subdivision/consolidation: Permit exemptions exist for some subdivisions and consolidations. If the subdivision or consolidation is in accordance with a planning permit granted under Part 4 of the *Planning and Environment Act 1987* and the application for the planning permit was referred to the Executive Director of Heritage Victoria as a determining referral authority, a permit is not required.

Specific exemptions may also apply to your registered place or object. If applicable, these are listed below. Specific exemptions are tailored to the conservation and management needs of an individual registered place or object and set out works and activities that are exempt from the requirements of a permit. Specific exemptions prevail if they conflict with general exemptions.

Find out more about heritage permit exemptions [here](#).

Construction dates 1857,
Heritage Act Categories Registered place,
Hermes Number 276
Property Number

Extent of Registration

Historic Building No. 450 'Halstead', Halstead Street, Caulfield (to the extent of the total exterior of the house and tower, and land to the extent of the total house allotment).

[*Victoria Government Gazette* No.73 - 29 August 1979 p.2711-2712]

This place/object may be included in the Victorian Heritage Register pursuant to the Heritage Act 2017. Check the Victorian Heritage Database, selecting 'Heritage Victoria' as the place source.

For further details about Heritage Overlay places, contact the relevant local council or go to Planning Schemes Online <http://planningschemes.dpcd.vic.gov.au/>