

FORMER WIMMERA FLOUR MILL AND SILO COMPLEX



FORMER WIMMERA FLOUR MILL AND SILO COMPLEX SOHE 2008



FORMER WIMMERA FLOUR MILL AND SILO COMPLEX SOHE 2008



1 former wimmera flour mill & silo complex gibson street rpanyup silos side view



H1011 FORMER WIMMERA FLOUR MILL AND SILO COMPLEX LHA 2015 1.JPG



H1011 FORMER WIMMERA FLOUR MILL AND SILO COMPLEX LHA 2015 2.JPG



H1011 FORMER WIMMERA FLOUR MILL AND SILO COMPLEX LHA 2015 3.JPG



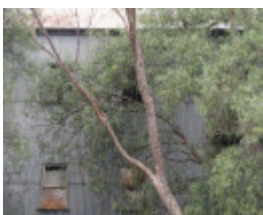
H1011 FORMER WIMMERA FLOUR MILL AND SILO COMPLEX LHA 2015 4.JPG



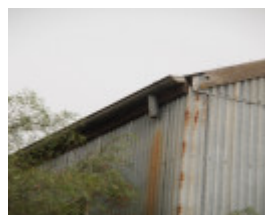
H1011 FORMER WIMMERA FLOUR MILL AND SILO COMPLEX LHA 2015 5.JPG



H1011 FORMER WIMMERA FLOUR MILL AND SILO COMPLEX LHA 2015 6.JPG



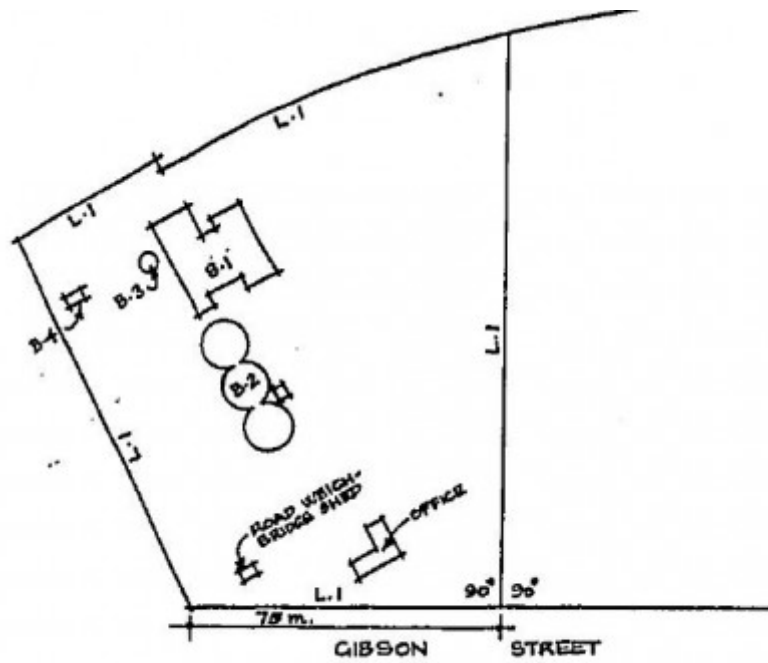
H1011 FORMER WIMMERA FLOUR MILL AND SILO COMPLEX LHA 2015 7.JPG



H1011 FORMER WIMMERA FLOUR MILL AND SILO COMPLEX LHA 2015 8.JPG



H1011 FORMER WIMMERA FLOUR MILL AND SILO COMPLEX LHA 2015 9.JPG



h01011 plan h1011

Location

GIBSON STREET RUPANYUP, YARRIAMBIACK SHIRE

Municipality

YARRIAMBIACK SHIRE

Level of significance

Registered

Victorian Heritage Register (VHR) Number

H1011

Heritage Overlay Numbers

HO48

VHR Registration

September 14, 1995

Heritage Listing

Victorian Heritage Register

Statement of Significance

Last updated on - September 1, 1999

The Rupanyup flour mill, a four storey timber and iron structure on a brick base, was built 1906 for the flour miller George Frayne. In 1907 John Monash (later Sir John) was commissioned to design three reinforced concrete silos for the mill. The contractors, Schumacher Mill Furnishing Works Pty Ltd., completed the silos in April, 1908. The mill was later operated by Thomas Brunton and Company until 1961 when it was bought by N B Love. The mill closed at that time, but the silos are still used for storage.

The buildings and associated structure form the first completely integrated complex for the storage and milling of grain in Victoria, and possibly Australia. It is the most intact complex of its type in Victoria and illustrates the complete process of combining raw materials with mechanical energy to produce a finished product.

The flour mill is a rare and essentially intact survivor of the many mills of the lightweight construction built in the Wimmera and other areas in the late nineteenth and early twentieth centuries after the introduction of roller mills. It demonstrates the importance of cheap, easily constructed and portable mills to the pioneering wheat growing and flour milling industries of the Wimmera, one of the most productive wheat growing regions in Australia. It is the only surviving example of a multi-storey corrugated iron mill building in Victoria, and is a notable application of the American balloon framing method of timber construction.

The three reinforced concrete silos, the first application of concrete construction to the bulk storage of grain in Victoria, are an important example of the work of the eminent pioneer reinforced concrete engineer Sir John Monash. They were believed to have been the largest grain stores in Australia when constructed.

Permit Exemptions

General Exemptions:

General exemptions apply to all places and objects included in the Victorian Heritage Register (VHR). General exemptions have been designed to allow everyday activities, maintenance and changes to your property, which don't harm its cultural heritage significance, to proceed without the need to obtain approvals under the Heritage Act 2017.

Places of worship: In some circumstances, you can alter a place of worship to accommodate religious practices without a permit, but you must [notify](#) the Executive Director of Heritage Victoria before you start the works or activities at least 20 business days before the works or activities are to commence.

Subdivision/consolidation: Permit exemptions exist for some subdivisions and consolidations. If the subdivision or consolidation is in accordance with a planning permit granted under Part 4 of the *Planning and Environment Act 1987* and the application for the planning permit was referred to the Executive Director of Heritage Victoria as a determining referral authority, a permit is not required.

Specific exemptions may also apply to your registered place or object. If applicable, these are listed below. Specific exemptions are tailored to the conservation and management needs of an individual registered place or object and set out works and activities that are exempt from the requirements of a permit. Specific exemptions prevail if they conflict with general exemptions.

Find out more about heritage permit exemptions [here](#).

Construction dates 1909,
Heritage Act Categories Registered place,
Hermes Number 3115
Property Number

History

Associated People: Tenant AS ABOVE;

Extent of Registration

AMENDMENT OF REGISTER OF HISTORIC BUILDINGS

Historic Building No. 1011:

Former Wimmera Flour Mill and Silo Complex, Gibson Street, Rupanyup, Shire of Northern Grampians.

To the extent of:

1. All of the buildings known as the former Wimmera Flour Mill and Silo Complex, comprising the mill building, the three connected concrete grain storage silos and associated elevator shed, the single concrete grain storage silo and the railway weighbridge shed marked B-1, B-2, B-3 and B-4 respectively on Plan 603964R (A) signed by the Chairperson, Historic Buildings Council and held by the Director, Historic Buildings Council, but excluding the brick office building and corrugated iron road weighbridge shed fronting Gibson Street.
2. All of the land marked L-1 on Plan 603964R (A) signed by the Chairperson, Historic Buildings Council and held by the Director, Historic Buildings Council, being part of the land described in Certificate of Title Volume 5689 Folio 1137764.

[Victoria Government Gazette No. G36 14 September 1995 p.2534]

This place/object may be included in the Victorian Heritage Register pursuant to the Heritage Act 2017. Check the Victorian Heritage Database, selecting 'Heritage Victoria' as the place source.

For further details about Heritage Overlay places, contact the relevant local council or go to Planning Schemes Online <http://planningschemes.dpcd.vic.gov.au/>